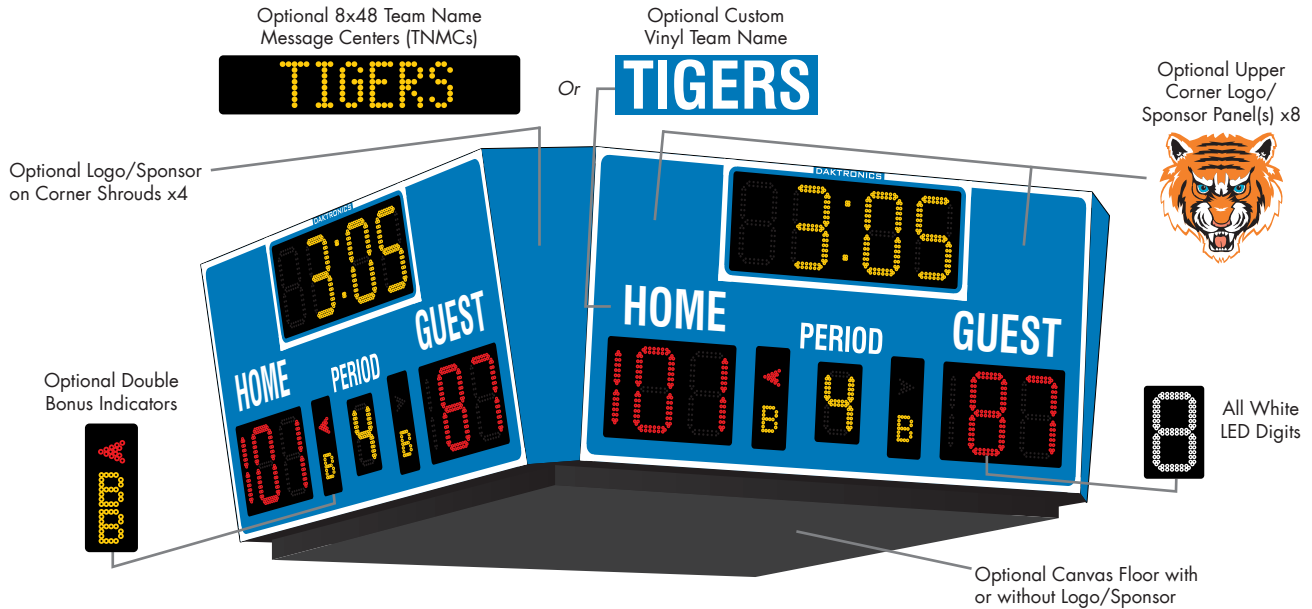


# DAKTRONICS BB-2102 PRODUCT SPECIFICATIONS



This indoor four-sided LED basketball scoreboard displays period time to 99:59, HOME and GUEST scores to 199, PERIOD to nine and indicates possession and bonus. Scoreboard can also score volleyball and wrestling. When period time is less than one minute, the scoreboard displays time to 1/10 of a second. Scoreboard shown with optional canvas floor; sheet metal floor painted to match scoreboard color also available.

CAPTION OPTIONS	POWER (120 VAC)*	UNCRATED WEIGHT	DIMENSIONS
<b>VINYL ONLY (STANDARD)</b>	570 Watts, 4.8 Amps	780 lb (354 kg)	4'-2" H x 10'-10" W x 10'-10" D (1.27 m x 3.30 m x 3.30 m)
<b>VINYL &amp; TNMCS</b>	810 Watts, 6.8 Amps	840 lb (381 kg)	

\*Models with 240 VAC power at half the indicated amperage are also offered (International Use Only).

## DIGITS & INDICATORS

- Period digit is 10" (254 mm) high. All other digits are 13" (330 mm) high. Bonus indicators are 4" (102 mm) high and possession arrows are 3" (76 mm) high.
- Scoreboard features PanaView® LED digit technology.
- Scoreboard comes with choice of LED colors:
  - > **Red/Amber LEDs:** clock digits, PERIOD digit, Bonus indicators and optional TNMCs are amber. Score digits and possession indicators are red.
  - > **White LEDs:** all digits, indicators and optional TNMCs are white.

## CAPTIONS & STRIPING

- HOME and GUEST captions are 6" (152 mm) high. PERIOD caption is 4" (102 mm) high. Optional TNMCs are 6" (152 mm) high.
- Standard captions and border striping are white vinyl. Choose another vinyl color at no additional cost (see [DD2101644](#)).

## DISPLAY COLOR

Choose a color from the Daktronics standard paint book (see [SL-02730](#)).

## CONSTRUCTION

Durable, lightweight aluminum Tuff Sport® cabinet withstands high-velocity impact from air-filled sports balls without the need for protective screens.

## PRODUCT SAFETY APPROVAL

ETL-listed, tested to CSA standards, and CE-labeled **for indoor use only**

## OPERATING TEMPERATURES

- Display: -22° to 122° Fahrenheit (-30° to 50° Celsius)
- Console: 32° to 130° Fahrenheit (0° to 54° Celsius)

# DAKTRONICS BB-2102 PRODUCT SPECIFICATIONS

CONTROL CONSOLES	CONTROL OPTIONS
<b>All Sport® 5000</b> (see <a href="#">SL-03991</a> )	<b>Wireless:</b> 2.4 GHz spread spectrum radio features 64 non-interfering channels and 8 broadcast groups (see <a href="#">SL-04370</a> ). This is a popular upgrade. <hr/> <b>Wired:</b> One-pair shielded cable of 22 AWG minimum is required. A cover plate with mounted connector and standard 2" x 4" x 2" (51 mm x 102 mm x 51 mm) outlet box is provided. Connector mates with signal cable from control console.
<b>RC-200</b> (see <a href="#">DD3715714</a> )	<b>Wireless</b> handheld controller features 2.4 GHz spread spectrum radio with 64 non-interfering channels and 8-10 hours of operation via internal rechargeable battery.
<b>DAK Score &amp; MX-1</b> (see <a href="#">DD3888368</a> )	CUSTOMER-SUPPLIED mobile device or tablet with DAK Score app installed communicates via <b>Bluetooth®</b> wireless technology to an MX-1 Interface Box that controls the scoreboard through 2.4 GHz radio or wired connection.

**Note:** All Sport 5000 or DAK Score required for Team Name Message Centers.

## HORN

A vibrating horn, mounted behind the scoreboard face, sounds automatically when period/timeout clock counts down to zero or manually as controlled by the operator.

## SEGMENT TIMER MODE

The segment timer mode is ideal for keeping practices on schedule. The horn at the end of a segment allows coaches and athletes to focus on the practice and to listen for the horn when it is time to change drills (see [SL-04004](#)).

## TIME OF DAY MODE

This scoreboard features a Time of Day (TOD) mode that allows it to act as a clock when the control console is unplugged or off. Refer to the scoreboard installation manual for instructions on how to enable the Time of Day mode.

## GENERAL INFORMATION

Scoreboard provides scoring capabilities for two teams. 100% solid state electronics are housed in an all aluminum cabinet. The display ships in four scoreboard sections, two floor sections, and separate corner shroud pieces for assembly on site. The assembly hardware is supplied. Price does not include steel cables or hoist for suspension (see [DD1627665](#)). Specifications and pricing are subject to change without notice.

## FAN FAVORITE OPTIONS

These are the most commonly requested enhancements:

- Custom vinyl team name caption in place of HOME  
\*or\* Two Digital Team Name Message Centers (TNMCs) in place of HOME and GUEST captions (see [SL-04342](#))
- 17" tall x 21" wide (432 mm x 533 mm) logo/sponsor panels in upper corners of each scoreboard face
- 4' tall x 23.125" wide [top] / 8.1" wide [bottom] logo/sponsor corner shrouds (1.22 m x 587 mm / 206 mm)
- 8' tall x 8' wide (2.44 m x 2.44 m) canvas floor in a solid color with or without logo/sponsor graphics  
\*or\* sheet metal floor painted to match scoreboard color
- Double bonus indicators

## OTHER ACCESSORIES & UPGRADES

The options below are available for additional customization:

- Different sounding 12 VDC horn in place of buzzer

## COMPLETE YOUR SYSTEM

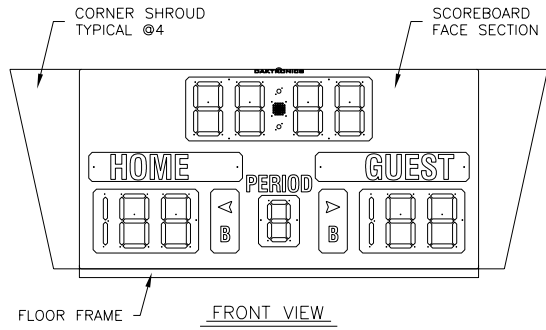
Contact Daktronics about adding any of this equipment to create a unique scoring and display system:

- Backlit advertising/ID panels (see [SL-03664](#))
- Non-backlit advertising/ID panels (see [SL-03917](#))
- Decorative accents
- Statistic displays, shot clocks, and light strips
- Sportsound® Indoor Audio
- Video displays
- Live web streaming of scores and stats

## FOR ADDITIONAL INFORMATION

- Mechanical Specifications: DWG-148777 (attached)
- Component Locations: DWG-1130102 (attached)
- Architectural Specifications: See [SL-04786](#)
- Installation Manual: See [DD2481697](#)
- Service Manual: See [DD2481648](#)

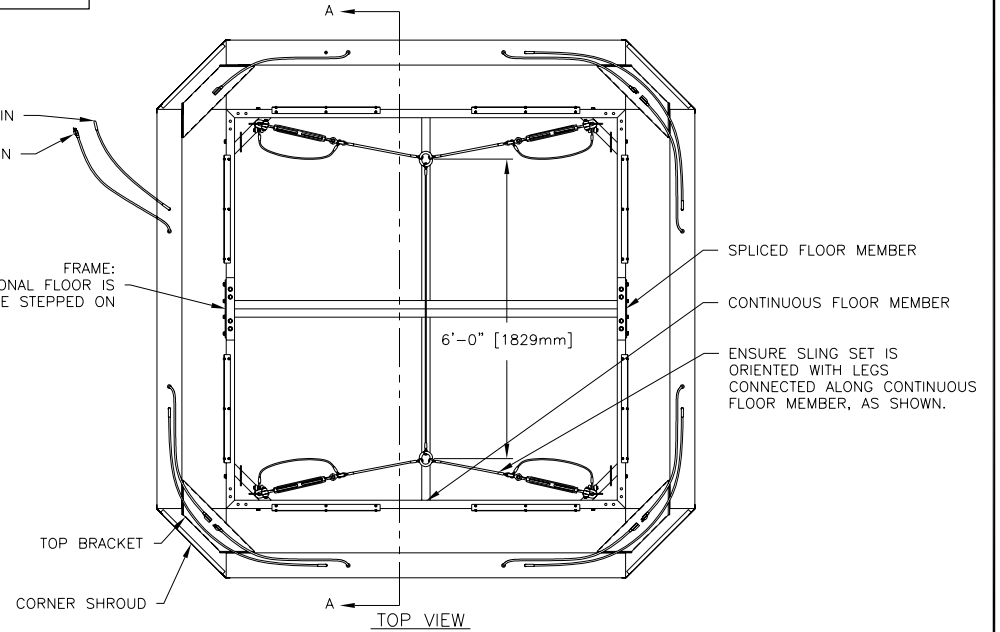
BB-2102



SIGNAL IN

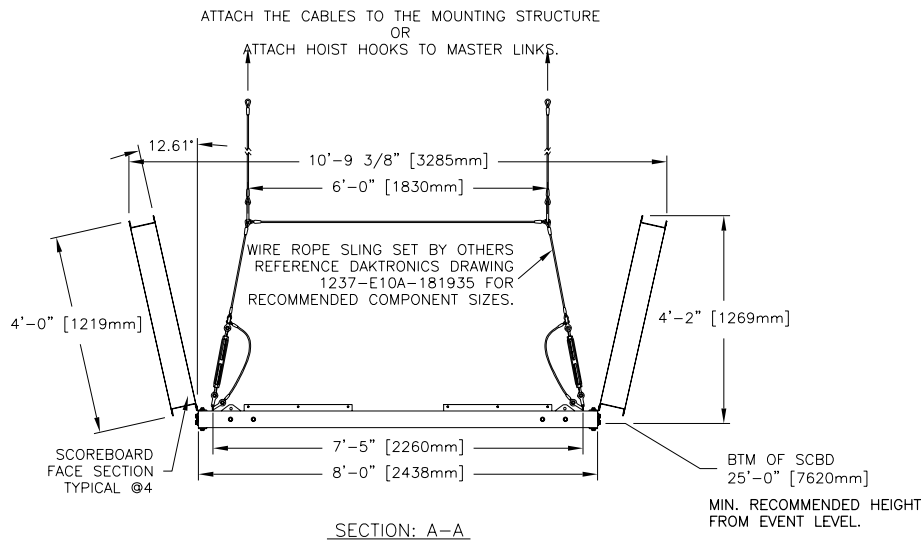
POWER IN

FRAME:  
THE OPTIONAL FLOOR IS NOT TO BE STEPPED ON



NOTES:

- SCOREBOARD MAY BE SUSPENDED IN ONE OF TWO WAYS:  
A. STATIC-HUNG FROM ROOF TRUSSES OR A MOUNTING STRUCTURE AS SHOWN TO THE LEFT.  
B. SUSPENDED FROM A HOIST (NOT SHOWN)
- CABLE SLINGS (WIRE ROPE AND FITTINGS), TURNBUCKLES, ETC. ARE NOT PROVIDED BY DAKTRONICS, UNLESS CONTRACTED OTHERWISE. REFERENCE DAKTRONICS DRAWING 1237-E10A-181935 FOR RECOMMENDED COMPONENT SIZES.
- ALL SUPPORT STRUCTURES AND HOISTS MUST BE APPROVED BY A LICENSED ENGINEER.
- DAKTRONICS IS NOT RESPONSIBLE FOR HOISTS OR STRUCTURES SPECIFIED OR INSTALLED BY OTHERS.
- SCOREBOARD IS SHIPPED IN SEVERAL PARTS:  
EACH FACE SECTION IS ONE PIECE, THE FLOOR FRAME IS IN TWO PARTS AND NEEDS SOME ASSEMBLY. TOP BRACKETS ARE ATTACHED DURING ASSEMBLY. CORNER SHROUDS ARE ATTACHED LAST, AND PROVIDE COSMETIC COVERING ONLY.
- CONNECT THE FIRST SECTION TO POWER AND SIGNAL. EACH SECTION CONNECTS TO THE NEXT, PROVIDING POWER AND SIGNAL FOR ALL FOUR SECTIONS.
- ESTIMATED WEIGHT: 780 LBS (355 KG)

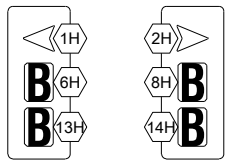
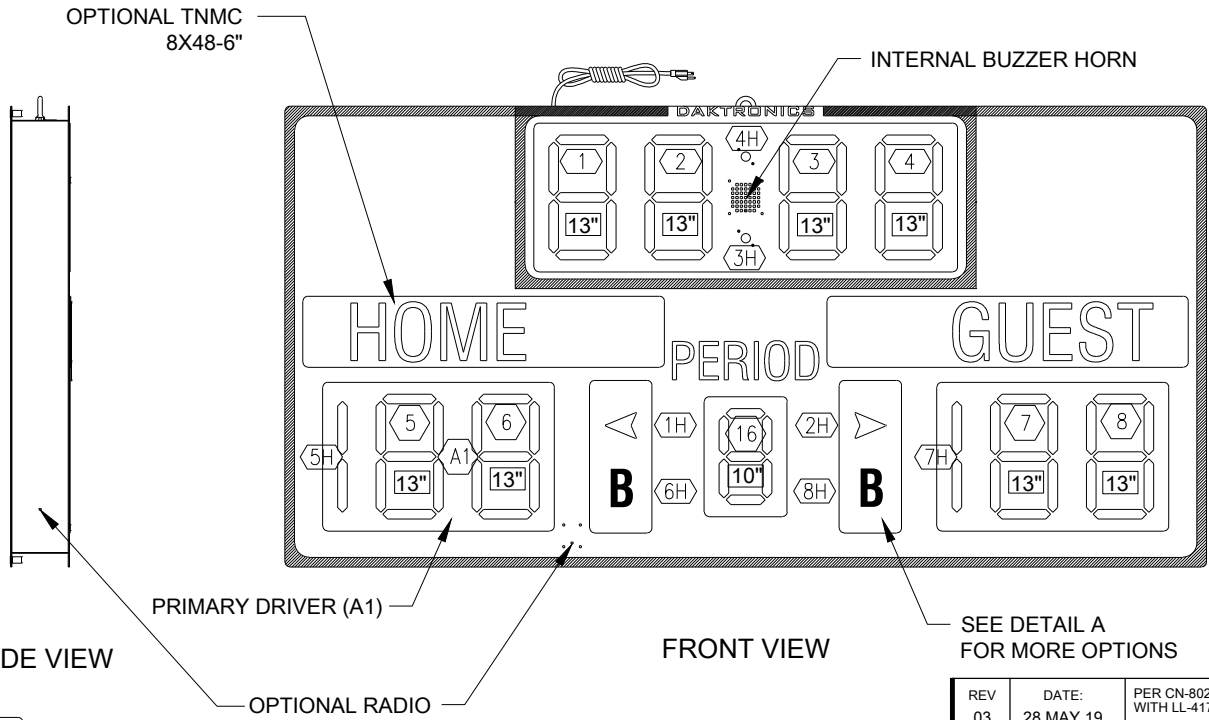
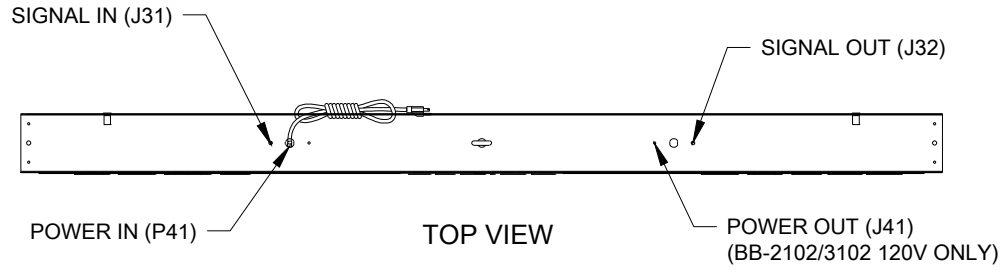


REV.	DATE	DESCRIPTION	BY	APPR.
04	20 JUN 06	UPDATED CLOCK LAYOUT. CHANGED DIGITS TO UNIVIEW.	JLF	CW
03	27 APR 06	UPDATED LIFT TUBES UPDATED FRAME UPDATED SLING SET	JNR	
02	22 JAN 03	UPDATED VIEW OF SLING SET AND LISTED REFERENCE DRAWING FOR SLING SET. ADDED MINIMUM HEIGHT REQUIREMENTS.	RJN	
01	29 OCT 01	UPDATED CORNER ANGLES AND WEIGHTS.	JUS	

THE CONCEPTS EXPRESSED AND DETAILS SHOWN ON THIS DRAWING ARE CONFIDENTIAL AND PROPRIETARY. DO NOT REPRODUCE BY ANY MEANS, INCLUDING ELECTRONICALLY WITHOUT THE EXPRESSED WRITTEN CONSENT OF DAKTRONICS, INC. COPYRIGHT 2004 DAKTRONICS, INC.	
DAKTRONICS, INC. BROOKINGS, SD 57006	
PROJ: INDOOR SCREENLESS SCOREBOARDS	
TITLE: MECHANICAL SPEC, BB-2102	
DES. BY:	DRAWN BY: E REBHAWN DATE: 31 MAY 01
REVISION	APPR. BY:
04	SCALE: 1=30
1237-E10B-148777	

BB-2101/3101 & BB-2102/3102 FACE



OPTIONAL DOUBLE BONUS INDICATORS

DETAIL: A  
SCALE 1:1

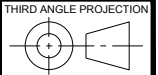
NOTES:

- 7 = DIGIT DESIGNATION = IN RELATION TO DRIVER
- 24" = DIGIT SIZE
- 1H = SEGMENT DESIGNATION
- A1 = DRIVER NUMBER

REV 03	DATE: 28 MAY 19	PER CN-80249; REPLACED LL-2525 LABELS WITH LL-4172151 LABELS.	BY: AGM
REV 02	DATE: 21 DEC 17	PER CN-47546, UPDATED LOCATIONS OF HOME/GUEST CAPTIONS	BY: KDD
REV 01	DATE: 02 MAR 15	PER EC-17119, REMOVED DETAILS, CHANGED MASTER TO PRIMARY	BY: KDB



THE CONCEPTS EXPRESSED AND DETAILS SHOWN ON THIS DRAWING ARE CONFIDENTIAL AND PROPRIETARY. DO NOT REPRODUCE BY ANY MEANS WITHOUT THE EXPRESS WRITTEN CONSENT OF DAKTRONICS, INC. OR ITS WHOLLY OWNED SUBSIDIARIES. COPYRIGHT 2017 DAKTRONICS, INC. (USA)



PROJECT: INDOOR SCOREBOARDS			
TITLE: COMPONENT LOCATION; BB-2101/3101/2102/3102			
DATE: 13 MAR 13	DIM UNITS: INCHES [MILLIMETERS]	SHEET	REV 03
SCALE: 1=20 DO NOT SCALE DRAWING			
DESIGN: DOPPELT	JOB NO. P1749	FUNC - TYPE - SIZE E - 10 - A	1130102
DRAWN: MJOHNSO			