

DISPLAY INFO			
QUANTITY: 1	NPN-6400-1-2-10003840		
PIXELS PER PANEL: 1.2 - 270 X 480			
PANEL WEIGHT: 16.9 LBS EACH (7.67 KG)			
BORDERS: STANDARD BORDERS - PANEL LENGTHS			
CUSTOM FEATURES:			
SPEED FRAME HARDWARE PER DISPLAY TASK			
DESCRIPTION	PART #	QUANTITY	PART VIEW
SPEED FRAME ASSY, 2X3, NPN D1	0A-2292-2023	4	N.A.
SPEED FRAME ASSY, 2X2, NPN D1	0A-2292-2022	2	N.A.
BOLT, 1/2" X 0.875", HEX SERR FL (SPRIPED FRAME STITCH BOLTS)	HC-1842	21	
TEK SCREW, 1/4" X 3" (STEEL STUD ATTACH)	HC-3979953	34	
SPAX POWERLAG SCREW, 1/2" X 5" (WOOD STUD ATTACH)	HC-5100765	34	
1/2" HOLLOW BOLT, 0.344" HOLE, 1" LONG	HC-5098752	34	
WOOD LAG SCREW, 3/8" X 4"	HC-5100786	34	
2-ADJUST BRACE PLATE, NPN D1 SPEED FRAME	0M-4951150	34	
SEISMIC CLIP, NPN D1 SPEED FRAME	0M-4983082	34	
TAP SCREW, #10-16 X 0.375, PHIL HEX W/SHR HEAD	HC-1188	36	
BOLT, M8-1.25 X 16MM, SERR TO FLANGE HEAD, 3MM HEX (PANEL TO SPEED FRAME)	HC-4884317	135	
CAP SCREW, M6-1.0 X 20MM SOCKET (LACKING BOLT)	HC-1795	244	

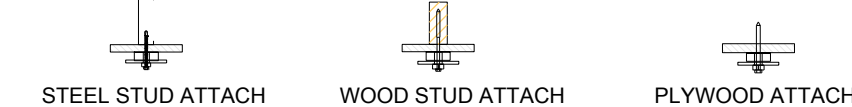
NPN WEIGHT TABLE			
DESCRIPTION	WEIGHT (EA) LBS	QTY	WEIGHT (TOTAL) LBS
NPN PANEL	16.9	32	540.8
STRUCTURE - 2X3 SPEED FRAME	14.5	2	29.0
STRUCTURE - 2X3 SPEED FRAME	21.5	4	86.0
HARDWARE	32	1	32.0
	SUB TOTAL		688
			+10% MARGIN
			757

WEIGHT TABLE DOES NOT INCLUDE ANY MAIN POWER OR SIGNAL WIRING THAT MAY CONTRIBUTE TO ADDITIONAL WEIGHT ON THE WALL.

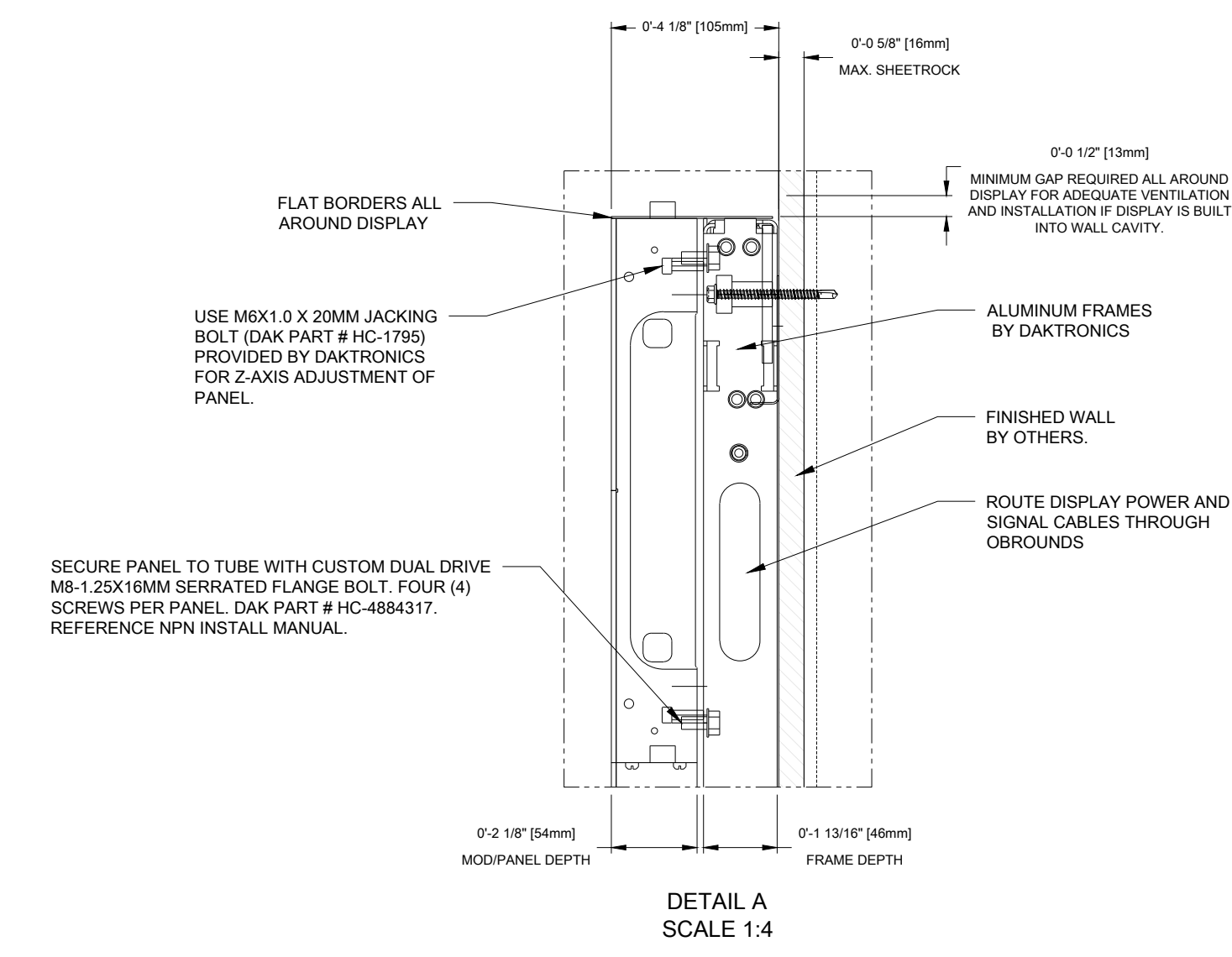
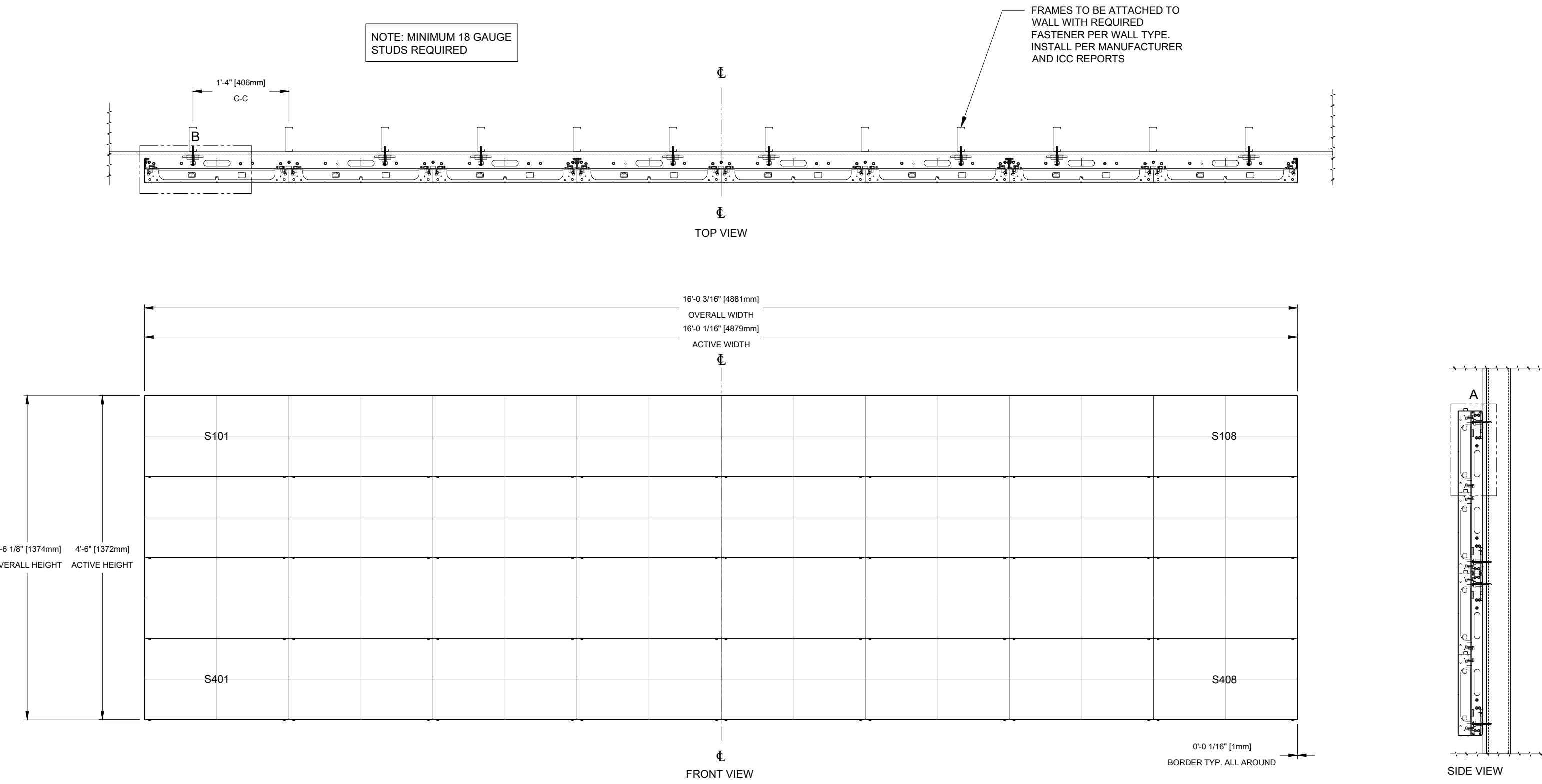
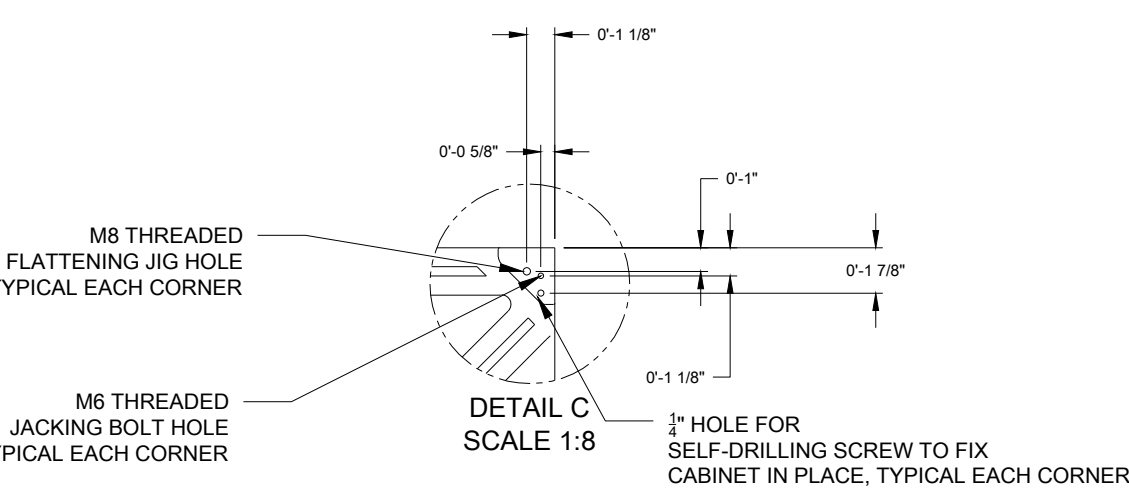
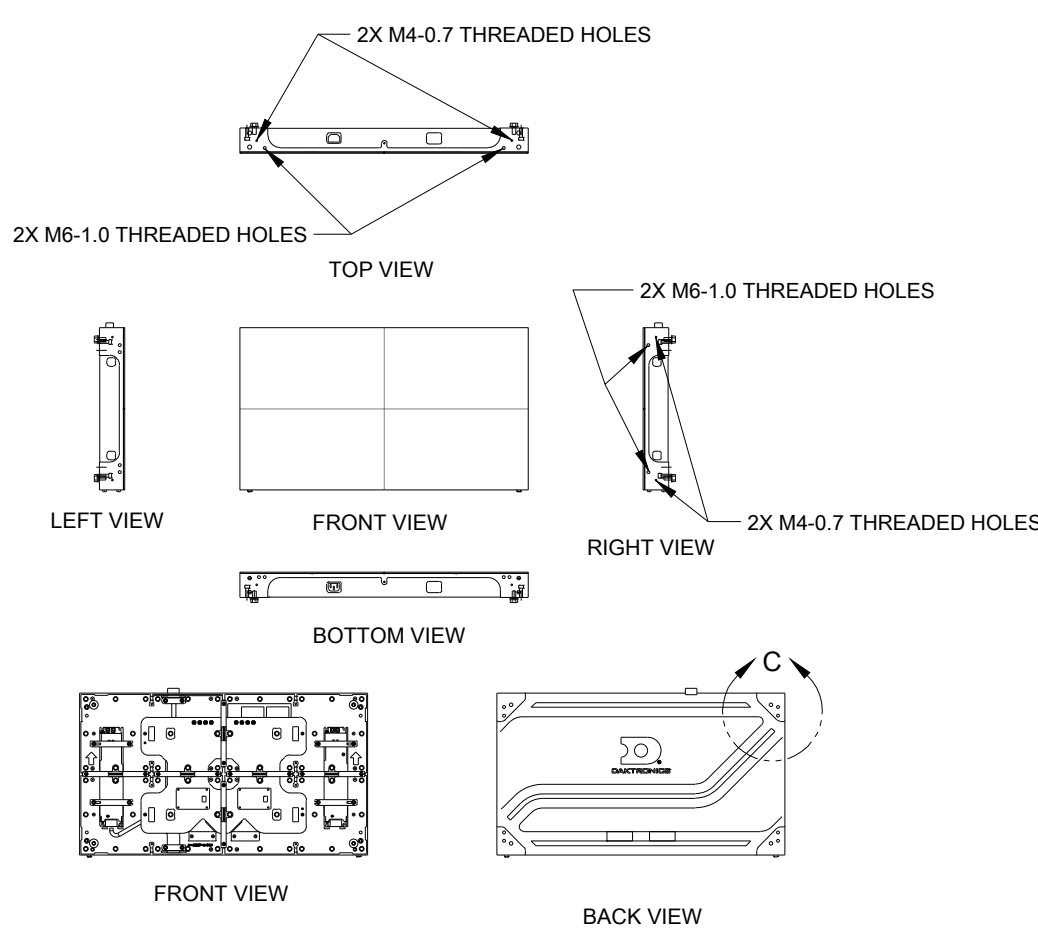
SPEED FRAME INFO

FRAME FASTENER REFERENCE TABLE			
WALL SUBSTRATE	FASTENER DAK PART NUMBER	FASTENER DESCRIPTION	HOLLOW BOLT DAK PART NUMBER
STEEL STUD	HC-3979953	1/4" X 3" TEK 3 SELF-DRILLING SCREW	HC-5098752 (SHPS ATTACHED)
WOOD STUD	HC-5100765	1/2" X 5" SPAX POWERLAG SCREW	HC-5098752 (SHPS ATTACHED)
PLYWOOD (CUSTOM) REQUIRES NON-STANDARD HOLLOW BOLT	HC-5100786	3/8" X 4" WOOD LAG SCREW	HC-5098752 (SHPS SEPARATE)
			58-11 HOLLOW BOLT, 0.281" HOLE, 1.000" LONG

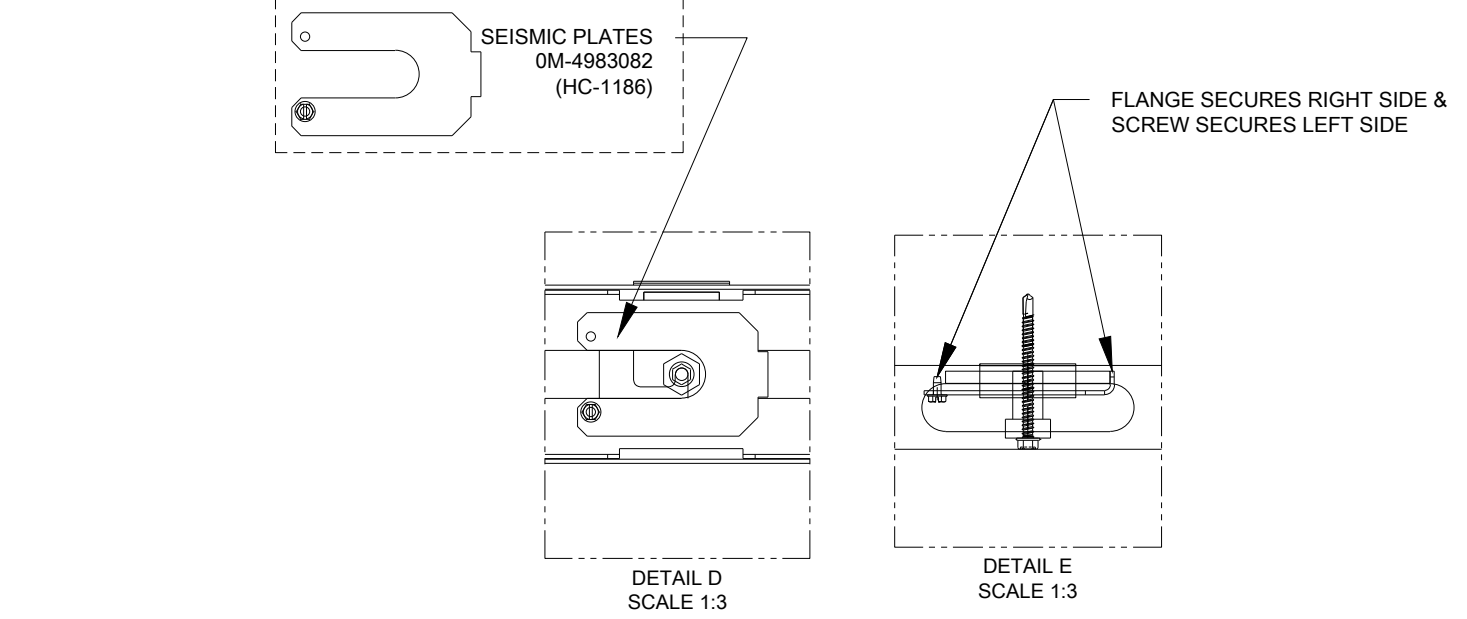
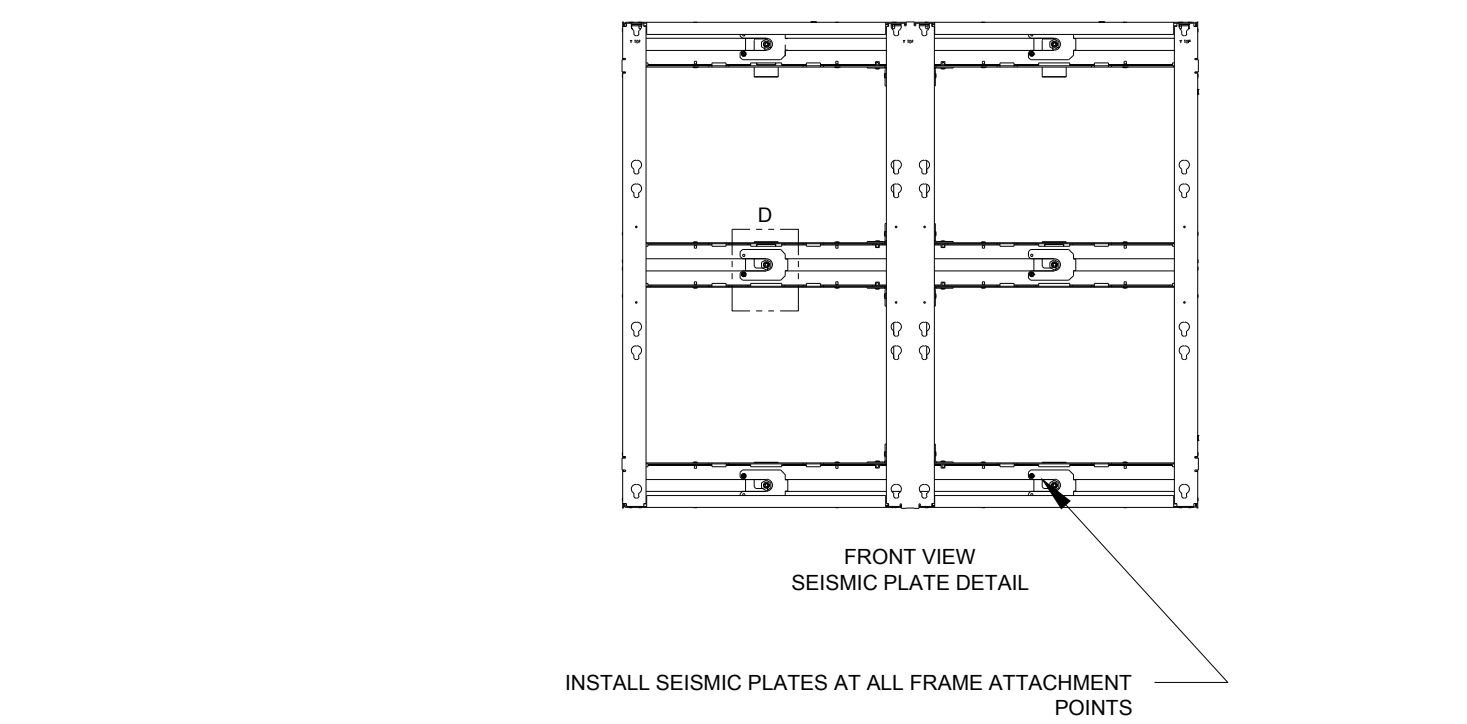
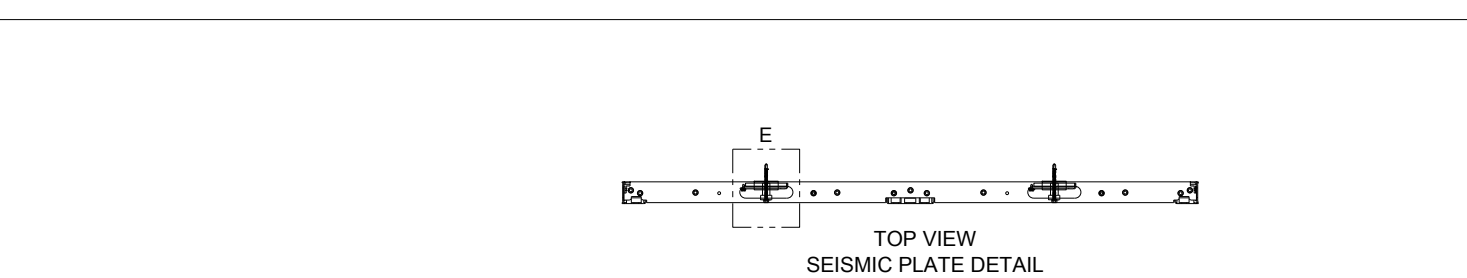
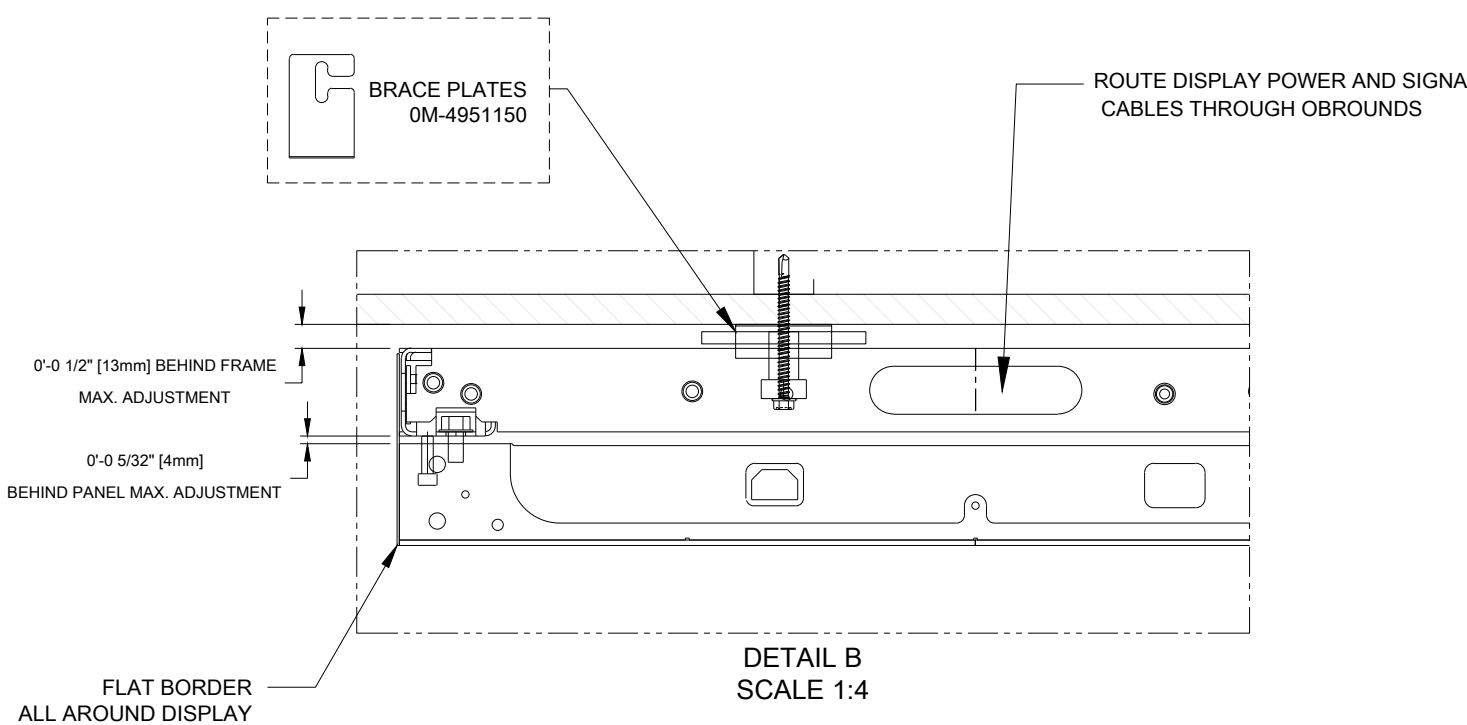
FRAMES TO BE INSTALLED DIRECT TO STUDS OR PLYWOOD. INSTALL HC-3979953 TEK SCREWS PER ITW BUILD-EX & ICC ESR-1076. INSTALL HC-5100765 SPAX POWERLAG SCREWS PER SPAX & T&E 191-07. NOTE: STEEL STUD ATTACHMENT SHOWN IN DRAWING.



STANDARD NPN VIEWS AND NOTES: MAX PANEL WEIGHT (MODS, HDWR, CABLES, INCLUDED): 16.9 LBS (7.67 KG)

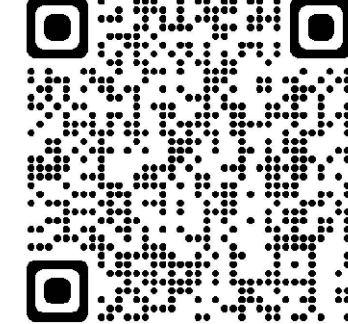


BRACE PLATE (0M-4951150) PROVIDED FOR CREATING A HARD SURFACE FOR THE HOLLOW JACKING BOLT TO PUSH OFF OF WHILE Z-ADJUSTING THE FRAME. PROVIDED BY DAKTRONICS. REFERENCE NPN-5200/8200/4400/6400 INSTALLATION MANUAL. MAX OF 0.5625" FRAME ADJUSTING ALLOWED.



SUBMITTAL APPROVAL
 APPROVED APPROVED AS NOTED APPROVED AS NOTED & RESUBMIT
 COMPANY: _____
 SIGNED: _____ DATE: _____
 TITLE: _____

PENDING APPROVAL
 NOT FOR CONSTRUCTION



SCAN QR CODE OR CLICK HERE FOR: NPN-X200T400 SERIES INSTALLATION DOCUMENTS D05014611

- NOTES:
- REFERENCE
 - REFER TO DAKTRONICS PROPOSAL DRAWING FOR DISPLAY COMPONENT SPECIFICATIONS.
 - REFER TO DAKTRONICS SYSTEM RISER DIAGRAM FOR POWER AND SIGNAL SPECIFICATIONS.
 - REFER TO NPN DISPLAY MANUAL D03918319 FOR DISPLAY INSTALLATION DETAILS.
 - GENERAL NOTES
 - ALL DIMENSIONS ARE IN FEET AND INCHES. DIMENSIONS ARE APPROXIMATE AND SUBJECT TO CHANGE DUE TO DETAILED DESIGN CONSIDERATIONS.
 - IT WILL BE THE UNDERSTANDING OF DAKTRONICS THAT SHOP APPROVAL IMPLIES THAT A QUALIFIED ENGINEER HAS REVIEWED THE ADDITION OF THE DISPLAY LOADS TO THE BUILDING AND THAT THE BUILDING STRUCTURE HAS BEEN DEEMED ACCEPTABLE TO SUPPORT THE ADDITIONAL LOADS AS DETAILED.
 - PAINT PLAN:
 - DISPLAY CABINETS: SEMI-GLOSS BLACK
 - VISIBLE STRUCTURE: SEMI-GLOSS BLACK
 - REFER TO INSTALLATION AND MAINTENANCE MANUAL FOR COMPLETE INSTALLATION INSTRUCTIONS.
 - DISPLAY NOTES
 - DAKTRONICS DISPLAYS ARE FRONT SERVICE.
 - STRUCTURAL NOTES
 - WEIGHT ALLOWANCE INCLUDES ALL EQUIPMENT AND ACCESSORIES NECESSARY FOR SAFELY MOUNTING THE EQUIPMENT TO THE DISPLAY STRUCTURE.
 - SUPPORT STRUCTURE IS ALUMINUM CONSTRUCTION.
 - CODE: STRUCTURAL DESIGN IS BASED ON THE INTERNATIONAL BUILDING CODE, 2009 EDITION.
 - LATERAL LOAD: 5 PSF HORIZONTAL PRESSURE APPLIED TO SURFACES NOT EXPOSED TO OUTDOOR WIND PRESSURE. DISSIMILAR METALS IN CONTACT SHALL BE INSULATED WITH PAINT OR OTHER APPROVED COATING TO PREVENT GALVANIC CORROSION.
 - PROJECT RESPONSIBILITIES
 - ALL ON-SITE WORK TO BE DONE IN ACCORDANCE WITH OSHA AND ALL LOCAL CODES THAT APPLY.
 - DAKTRONICS SUBCONTRACTORS RESPONSIBLE FOR JOBSITE SAFETY.
 - DAKTRONICS SUBCONTRACTORS ARE SOLELY RESPONSIBLE FOR THE DESIGN AND INSTALLATION OF ALL TEMPORARY BRACING AND OTHER ELEMENTS AND EQUIPMENT NECESSARY FOR A SAFE INSTALLATION.
 - EACH SUBCONTRACTOR IS RESPONSIBLE FOR THE REMOVAL AND DISPOSAL OF WASTE MATERIALS ON THE JOBSITE.
 - DAKTRONICS AND OWNERS SUBCONTRACTORS SHALL VERIFY ALL EXISTING DIMENSIONS AND CONDITIONS PRIOR TO INSTALLATION.
 - REFER TO STANDARD FORM AGREEMENT BETWEEN CONTRACTOR AND SUBCONTRACTOR (AA-4401) AND ATTACHED DOCUMENTS FOR DETAILED SCOPE OF WORK AND RESPONSIBILITY.