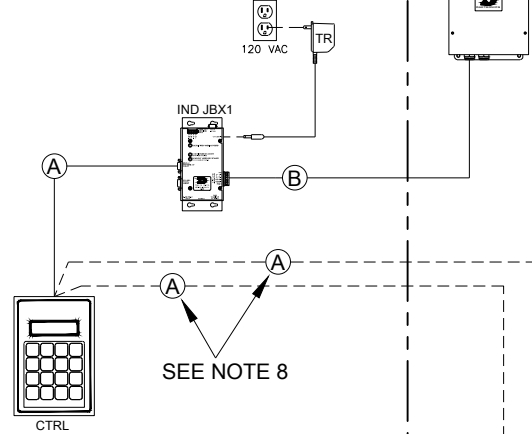


INDOOR CONTROL (PRIMARY)

OUTDOOR CONTROL (SECONDARY)

CABLE B - WIRING TABLE A

RADIO J-BOX TERMINAL	WIRE COLOR	SERVER RADIO TERMINAL
POWER	GRN	1 +VDC-P
422 RX-P	BLU	2 D1OUT-P
422 RX-N	WHT	3 D1OUT-N
422 TX-P	BRN	4 D1IN-P
422 TX-N	BLK	5 D1IN-N
GND	RED	6 GND-N

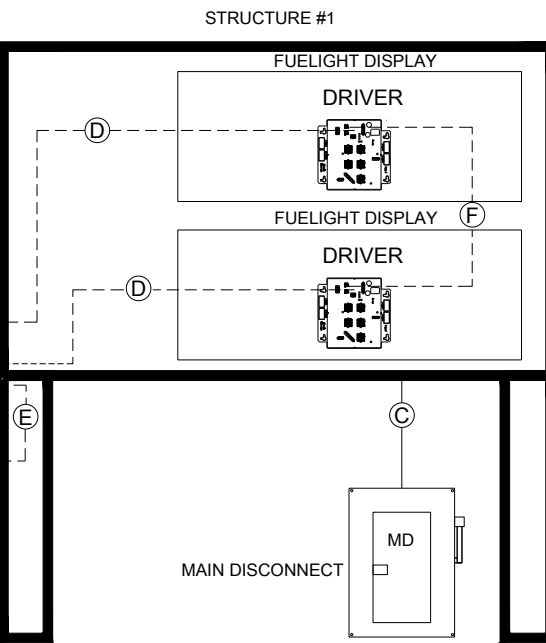


SEE NOTE 8

JBX2 WIRING TABLE CABLE E

JBX2 TERMINAL	WIRE COLOR
TB3-4	BLK
TB3-3	WHT
TB3-2	GRN
TB3-1	RED

SEE NOTE 4D

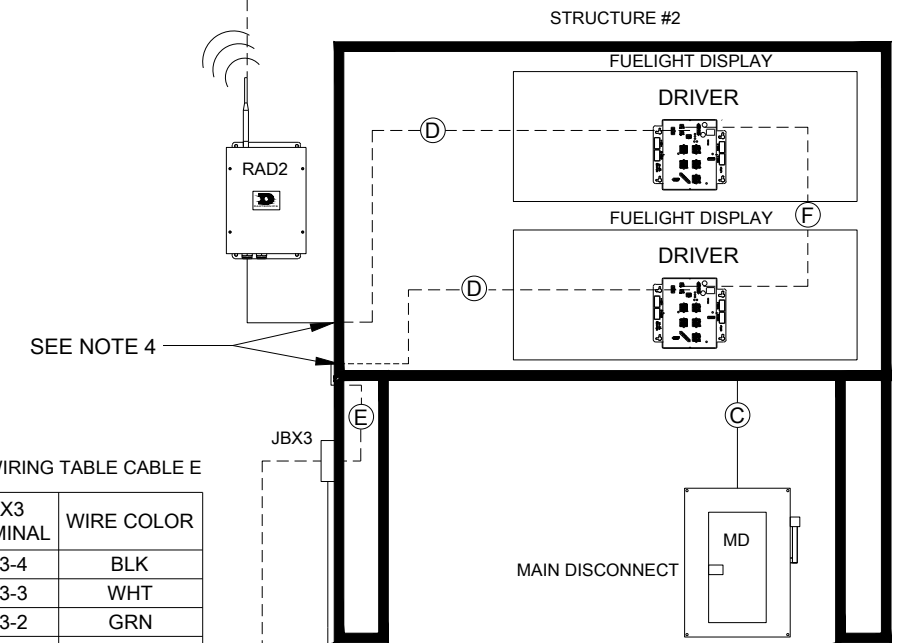


SEE NOTE 4

JBX3 WIRING TABLE CABLE E

JBX3 TERMINAL	WIRE COLOR
TB3-4	BLK
TB3-3	WHT
TB3-2	GRN
TB3-1	RED

SEE NOTE 4D



SEE NOTE 4

NOTES

- POWER FEEDER SIZED AS NEEDED, BY CUSTOMER. ALL WIRING TO MEET OR EXCEED LOCAL AND NATIONAL ELECTRICAL CODES.
- COMMUNICATION CABLE IN CONDUIT WHERE REQUIRED.
- 2 KNOCKOUTS PROVIDED FOR 3/4" CONDUIT FITTINGS ON REAR OF DISPLAY FOR POWER AND SIGNAL ENTRANCE.
- 4A. INSTALL QUICK CONNECT IN THE SIGN STRUCTURE NO MORE THAN 8 FEET FROM THE DISPLAY DRIVER. DRILL A 7/8" HOLE TO PASS CONNECTORS THROUGH. USE INCLUDED BUSHINGS WHERE APPLICABLE.
- 4B. INSTALL JBX2 AND JBX3 AT THE BASE OF THE SIGN STRUCTURE AND RUN PROVIDED CABLING TO QUICK CONNECT. PROVIDED CABLING IS OPTIONALLY RUN THROUGH 3/4" CONDUIT FROM THE BOX TO THE SIGN STRUCTURE. SEE JBX2 AND JBX3 WIRING TABLES FOR WIRE TERMINATIONS.
- 4C. IND JBX1, JBX2, AND JBX3 CONNECTIONS ARE NOT TO BE USED WITH A LAPTOP.
- 4D. OUTDOOR JBX MUST BE CONNECTED TO THE INCOMING DISPLAY SAFETY GROUND WIRE USING INCLUDED GROUNDING WIRE.
- REFER TO MANUAL FOR LINE-TO-LINE WIRING BETWEEN DISPLAYS.
- ALL INDOOR COMMUNICATION PROVIDED IN KIT IS AN OPTIONAL INSTALLATION.
- TOTAL DISTANCE BETWEEN SERVER RADIO AND ANY CLIENT RADIO MUST NOT EXCEED 1500FT, AND MUST HAVE CLEAR LINE OF SITE WITH NO OBSTRUCTIONS
- DB9 TO DB9 CABLE CAN BE CONNECTED FROM DM-100 DIRECTLY TO THE JBX AT THE BASE OF EACH SIGN STRUCTURE FOR WIRED CONTROL OF EACH INDIVIDUAL STRUCTURE

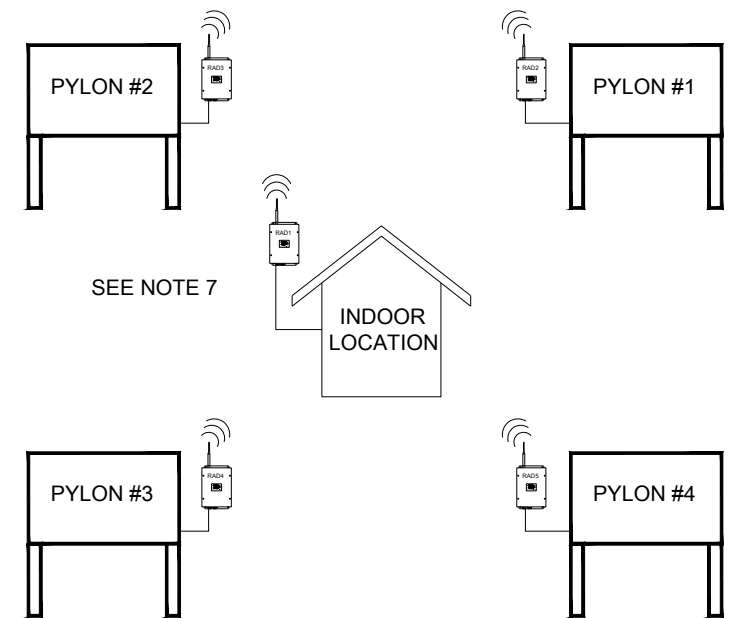
COMPONENT IDENTIFICATION TABLE

COMPONENT	DESCRIPTION	PROVIDED BY	INSTALLED BY
DRIVER	FUELIGHT DRIVER	DAKTRONICS	FACTORY
MD	MAIN DISCONNECT	CUSTOMER	CUSTOMER
TR	TRANSFORMER, WALL PACK, 12VAC	DAKTRONICS	CUSTOMER
CTRL	WIRED CONTROLLER (DM-100)	DAKTRONICS	CUSTOMER
IND JBX1 (PCB 0P-1611-0506)	JBOX, INDOOR DIRECT, REFER TO IND JBX1 WIRING TABLE	DAKTRONICS	CUSTOMER
JBX2 (PCB 0P-1611-0507)	JBOX, DIRECT ACCESS, REFER TO JBX2 WIRING TABLES	DAKTRONICS	CUSTOMER
JBX3 (PCB 0P-1611-0507)	JBOX, DIRECT ACCESS, REFER TO JBX3 WIRING TABLES	DAKTRONICS	CUSTOMER

COMPONENT IDENTIFICATION TABLE

COMPONENT	DESCRIPTION	PROVIDED BY	INSTALLED BY
A	CABLE; RS232 DB9 MALE TO DB9 FEMALE, 10FT	DAKTRONICS	CUSTOMER
B	6 COND, 18 AWG, SHIELDED CABLE, 100FT INCLUDED, BELDEN 5304FE 8 500	DAKTRONICS	CUSTOMER
C	POWER FEEDER SEE NOTE "1"	CUSTOMER	CUSTOMER
D	6 POS QUICK CONNECT PANEL MOUNT TO 6 POS MINI MNL, 8FT	DAKTRONICS	CUSTOMER
E	6 POS QUICK CONNECT CABLE TO WHIP, 50FT	DAKTRONICS	CUSTOMER
F	CABLE; LINE TO LINE; 4 POS MINI MNL, 15FT	DAKTRONICS	CUSTOMER

4 PYLON DETAIL



SEE NOTE 7

DAKTRONICS, INC. BROOKINGS, SD 57006 DO NOT SCALE DRAWING		THE CONCEPTS EXPRESSED AND DETAILS SHOWN ON THIS DRAWING ARE CONFIDENTIAL AND PROPRIETARY. DO NOT REPRODUCE BY ANY MEANS WITHOUT THE EXPRESSED WRITTEN CONSENT OF DAKTRONICS, INC. COPYRIGHT 2013 DAKTRONICS, INC.
PROJ: GEN III FUELIGHT TITLE: RISER DIAGRAM; MULTIPLE PYLON; RADIOS		
DESIGN: JLAIRD	DRAWN: JLAIRD	DATE: 17 SEPT 15
SCALE: NONE		
SHEET	REV	JOB NO.
	00	P1611
FUNC - TYPE - SIZE		3117936
F - 01 - B		