

CONTENT STUDIO

CONTENT STUDIO OPTIONS

Users may find that the default settings in Content Studio does not always fit their needs. Content Studio allows the user to customize Content Studio by changing its default settings.

CONTENT STUDIO OPTIONS

1. Click on the **Blue D Box** and select **Content Studio Options** (see figure 1).
2. Content Studio Options will appear in a new window.

Environment: This is where users can change the default time for Layouts and Pages. The default setting is 10 seconds, but can be changed to meet your needs. We recommend 3 – 5 seconds per layout. The entire presentation (set of layouts with one thought) should not be longer than 15 seconds. The average is around 8 seconds. This is all dependent on zoning restrictions in your local municipality (see figure 2).

Plug-ins: Users can enable or disable your Timeline feature within the plug-ins section. If you place a check mark in the box in front of Timeline and click OK, a new tab will appear in bottom left of Content Studio. Timeline is another way to view your presentation and your layouts. (see figure 3).

Text Filtering: These are words that the FCC has deemed inappropriate for the airways, They are not case sensitive. When a message is saved, it is scanned for this list of words. If a filtered word is in the presentation, the user is not allowed to save. If you would like to add a word to the prohibited word list, type it in the designated box and click on the plus sign to the right of the field (see figure 4).

About: Provides Daktronics contact information if questions or concerns arise.

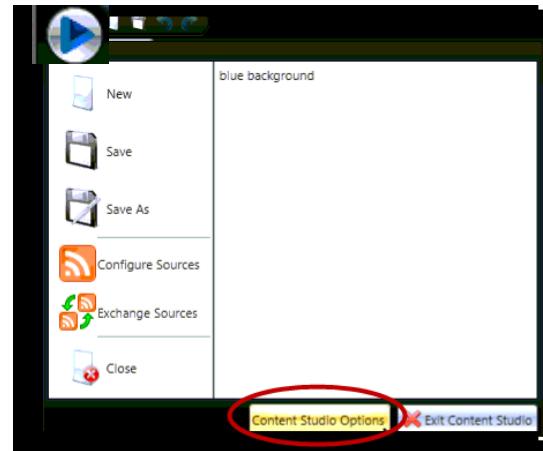


Figure 1: Content Studio Application Menu and Options

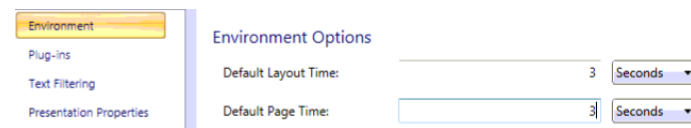


Figure 2: Environment

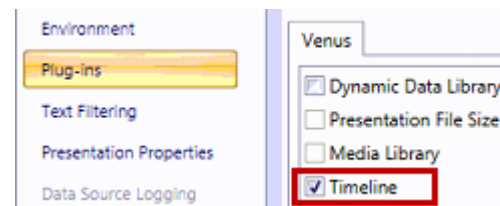


Figure 3: Plug-Ins

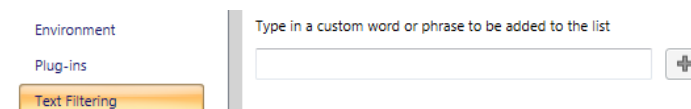


Figure 4: Text Filtering