

Changing Venus 1500's Default Options

Daktronics spent a lot of time and research when it decided what the default settings for Venus 1500 should be. However, you may find that the default settings don't always fit your own needs.

This lesson isn't so much an exercise as it is a reference on how to customize Venus 1500 by changing its default settings.

1. Click the round orange circle in the top left corner, the **Application Menu** and select **Venus 1500 Options**. (See Figure 1)

The Venus 1500 Options dialog box opens.

2. Click the tabs on the left to view different option categories. See the table below, *Tabs in the Venus 1500 Options Dialog Box*, for more information on these categories.
3. Change the options as you see fit. Click **OK** to confirm the changes.

Exercise

Exercise: Explore the Venus 1500 Options window.



Figure 1: Click on Venus 1500 Options button from the Application Menu.

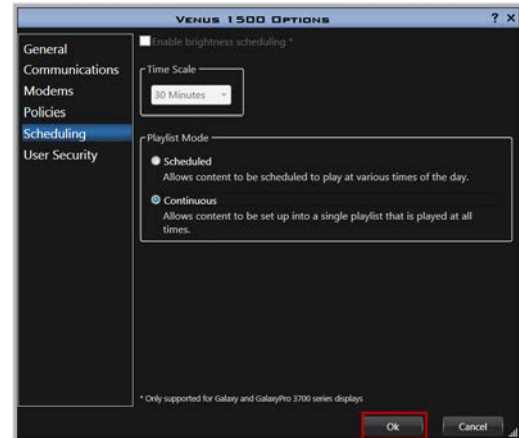


Figure 2: The Scheduling tab of the Venus 1500 Options dialog box.

General	Update Interval: set how often you want Venus to refresh your home page by connecting to your display (must be set to Online) Publish Presentation Overwrite: If you want to resend content to display each time you publish, check this. TIP: it isn't necessary to resend your creatives; video files can take a bit to publish. Time Synchronization: when checked, syncs the time on the display when content is published. Firmware Updates: Select if you want Venus 1500 to prompt you when firmware updates are available for your display.
Communications	Daktronics recommends you do not change these settings unless a technician advises you to.
Modems	Verifies if you have a modem enabled for communication. Used for dial up communication.
Policies	Set zoning restrictions required by your local community. Hold time, flashing and effects.
Scheduling	Continuous: the default setting. All content added and published will play the same days and hours. Scheduled: considered the "day part" scheduling mode. Schedule morning, afternoon, evening, weekly, biweekly, monthly, etc.
User Security	Enable Users create user log ins to open and use Venus 1500