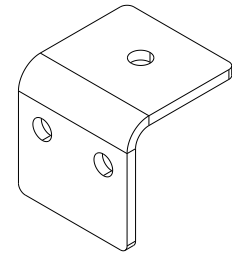
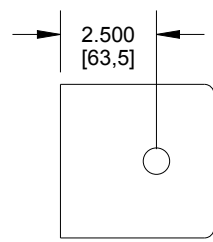


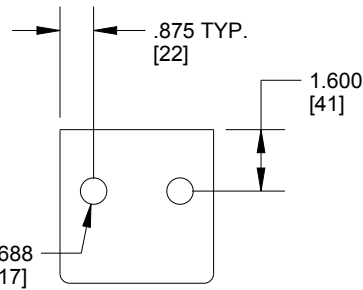
WIDTH (MODS)	WEIGHT OF KIT (APPROX)
**X4	69 LBS [31 KGS]
**X5	83 LBS [38 KGS]
**X6	98 LBS [45 KGS]
**X7	111 LBS [50 KGS]



ISOMETRIC VIEW



TOP VIEW



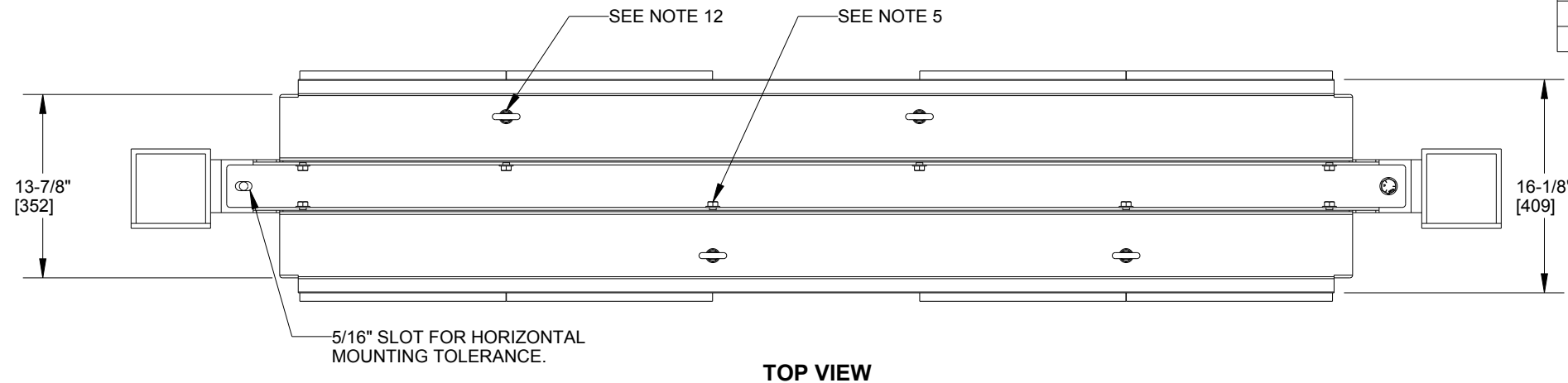
FRONT VIEW

SIDE VIEW

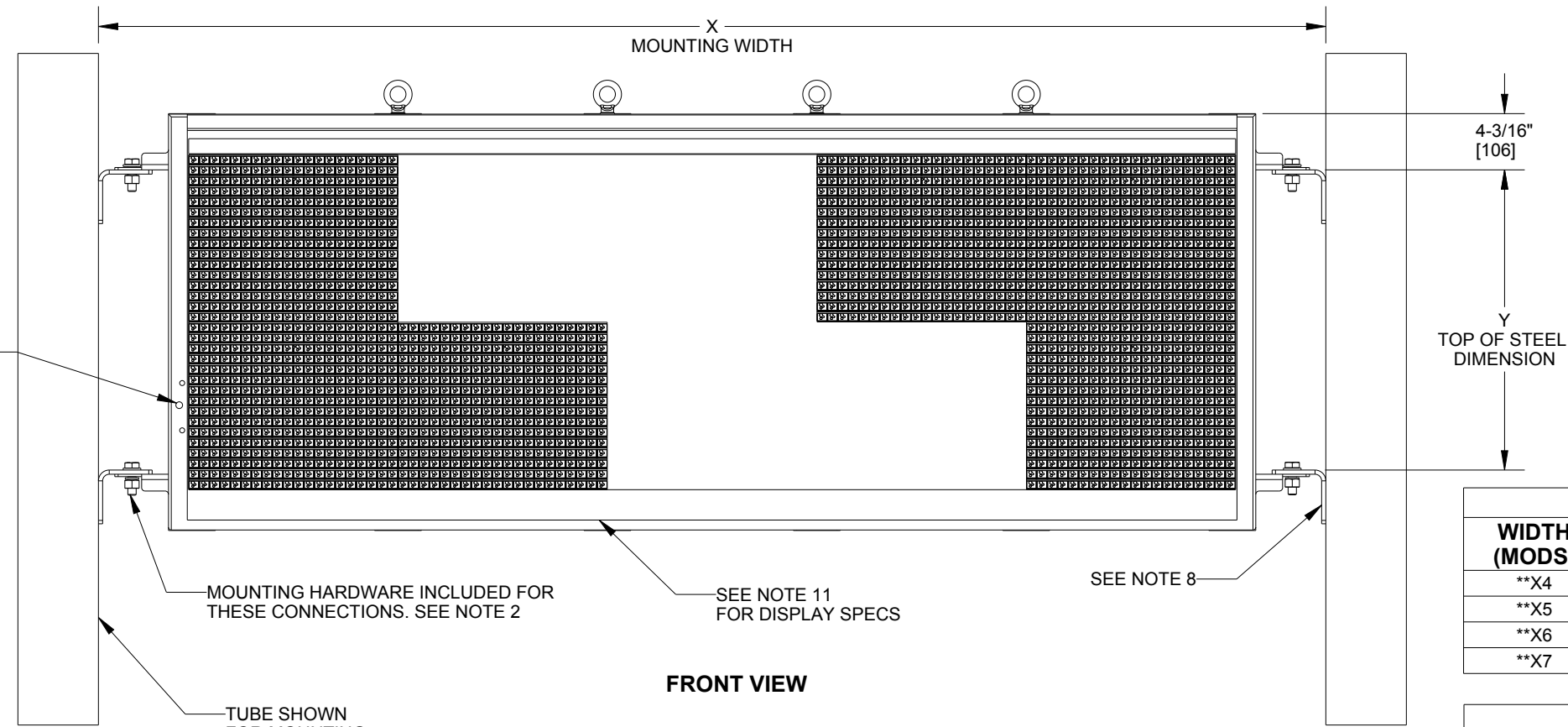
MOUNTING ANGLES (HS-2598)
SCALE 1/4

NOTES:

1. ALL DIMENSIONS IN FEET AND INCHES [MILLIMETERS].
2. KIT INCLUDES 2 STEEL CHANNELS, 4 MOUNTING ANGLES, AND HARDWARE NOTED ON DRAWING.
3. CHANNEL AND MOUNTING ANGLES ARE GRADE 50 STEEL.
4. DISPLAY AND KIT SHIPPED AS SEPERATE UNITS. ASSEMBLY IS REQUIRED.
5. ALL CLIP ANGLE LOCATIONS MUST BE USED FOR CHANNEL MOUNTING. ALL MOUNTING BRACKETS MUST BE USED FOR DISPLAY INSTALLATION.
6. DAKTRONICS NOT RESPONSIBLE FOR SHROUDING. DO NOT COVER LIGHT SENSOR.
7. DAKTRONICS NOT RESPONSIBLE FOR THE MAIN ELECTRICAL DISCONNECT.
8. DAKTRONICS NOT RESPONSIBLE FOR MOUNTING HARDWARE OR WELDING TO THE STRUCTURE.
9. DO NOT USE I BEAM FOR MOUNTING AT GREATER LENGTHS THAN "X" DIMENSION.
10. DAKTRONICS NOT RESPONSIBLE FOR THE INTEGRITY OF THE STRUCTURE THE DISPLAY IS MOUNTED TO.
11. REFER TO STANDARD SHOP DWG FOR OTHER SPECIFICATIONS.
12. WHEN LIFTING THE DISPLAY WITH THE LIFT EYES, ALL LOCATIONS MUST BE USED.



TOP VIEW



FRONT VIEW

DO NOT BLOCK LIGHT SENSOR. SEE NOTE 5

MOUNTING HARDWARE INCLUDED FOR THESE CONNECTIONS. SEE NOTE 2

SEE NOTE 11 FOR DISPLAY SPECS

TUBE SHOWN FOR MOUNTING CONCEPT ONLY. SEE NOTES 9 & 10

MOUNTING WIDTH	
WIDTH (MODS)	"X" DIMENSION
**X4	6'-3 13/16" [1926mm] ± 5/16"
**X5	7'-7 7/16" [2323mm] ± 5/16"
**X6	8'-11" [2718mm] ± 5/16"
**X7	10'-1 13/16" [3094mm] ± 5/16"

TOP OF STEEL	
HEIGHT (MODS)	"Y" DIMENSION CRITICAL
1X**	9 7/8" (+0.055"/ -0.0075")
2X**	22 3/8" (+0.035"/ -0.0275")
3X**	34 7/8" (+0.015"/ -0.0475")
4X**	47 5/16" (+0.0575"/ -0.005")

DAKTRONICS, INC. BROOKINGS, SD 57006		THE CONCEPTS EXPRESSED AND DETAILS SHOWN ON THIS DRAWING ARE CONFIDENTIAL AND PROPRIETARY. DO NOT REPRODUCE BY ANY MEANS WITHOUT THE EXPRESS WRITTEN CONSENT OF DAKTRONICS, INC. COPYRIGHT 2015 DAKTRONICS, INC.	
DO NOT SCALE DRAWING			
PROJ: GALAXY GS6 SERIES			
TITLE: SHOP DWG, GS6 BACK TO BACK KIT			
DESIGN: BKRUSE	DRAWN: BKRUSE	DATE: 27-AUG-15	
SCALE: 1=12			
SHEET: 1 OF 1	REV: 00	JOB NO: P 1817	FUNC-TYPE-SIZE: E - 07 - B
			3128528

REV	DATE:	BY:

Drawing Revision History: 3128528

Revision #'s	Revision Description	Revision By	Revision Date
00		bkruse	10/20/2015 10:54AM