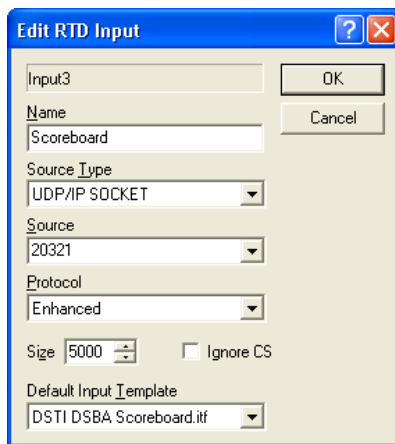


This guide will help you set up your DakStats® or Stat Crew® software to communicate with the Venus® 7000 display controller using the Daktronics Scoring-Timing Interface (DSTI). For more information about Stat Crew software, visit www.statcrew.com or call (513) 771-4192. For more information on setting up the Venus 7000 software, refer to **ED-14551**.

Set Up RTD Inputs

1. From the Venus 7000 Shell program, click **Configure**.
2. Click on the **RTD Inputs** tab.
3. Double-click on Input 3.
4. In the *Edit RTD Input* window, enter the following settings based on your stats program and click **OK** when finished:

<i>Name</i>	"Scoreboard"
<i>Source Type</i>	UDP/IP Socket
<i>Source</i>	"21321"
<i>Protocol</i>	Enhanced
<i>Size</i>	"5000"

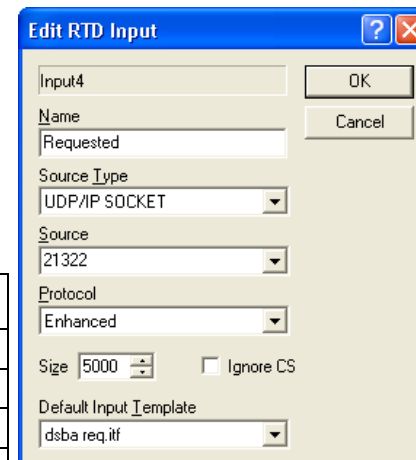


Default Input Template

Sport	DakStats	Stat Crew
Baseball	dsba sbrd.itf DSTI DSBA Scoreboard.itf	DSTI SC ba sbrd.itf
Basketball	dsbb sbrd.itf	DSTI SC bb sbrd.itf
Football	dsfb sbrd.itf	DSTI SC fb sbrd.itf
Hockey	N/A	DSTI SC hky sbrd.itf
Soccer	DSTI DSSO Scoreboard.itf	N/A
Volleyball	dsvb sbrd.itf	DSTI SC vb sbrd.itf

5. Double-click on Input 4.
6. In the *Edit RTD Input* window, enter the following settings based on your stats program and click **OK** when finished:

<i>Name</i>	"Requested"
<i>Source Type</i>	UDP/IP Socket
<i>Source</i>	"21322"
<i>Protocol</i>	Enhanced
<i>Size</i>	"5000"



Default Input Template

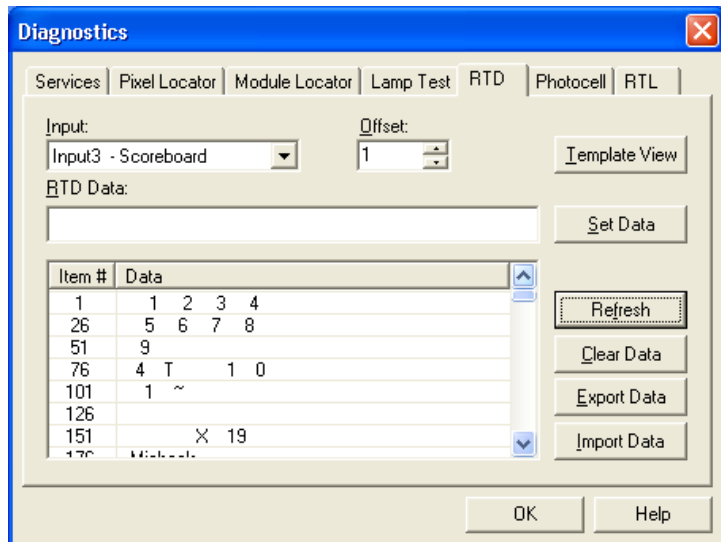
Sport	DakStats	StatCrew
Baseball	dsba req.itf DSTI DSBA Position Lineups.itf DSTI DSBA Plr Msg req.itf DSTI DSBA Bullpen.itf DSTI DSBA Game Summary req.itf	DSTI SC ba req.itf
Basketball	dsbb req.itf	DSTI SC bb req.itf
Football	dsfb indiv.itf dsfb team.itf dsfb toppass.itf dsfb toprecv.itf dsfb toprush.itf dsfb toptack.itf	DSTI SC fb indiv.itf DSTI SC fb team.itf DSTI SC fb toppass.itf DSTI SC fb toprecv.itf DSTI SC fb toprush.itf DSTI SC fb toptack.itf
Hockey	N/A	DSTI SC hky req.itf
Soccer	DSTI DSSO Requested.itf	N/A
Volleyball	dsvb req.itf	DSTI SC vb req.itf

Testing Venus 7000 & DSTI Communication

1. Open a competition in DakStats or Stat Crew and enter a play.
2. From the Venus 7000 Shell program, click **Diagnostics**.
3. Verify the Venus 7000 Sign Service starts (the globe is spinning).
4. Click the **RTD** tab.
5. Select Input 3 as the *Input*.

Note: Old data may still be present; click **Clear Data** to remove it.

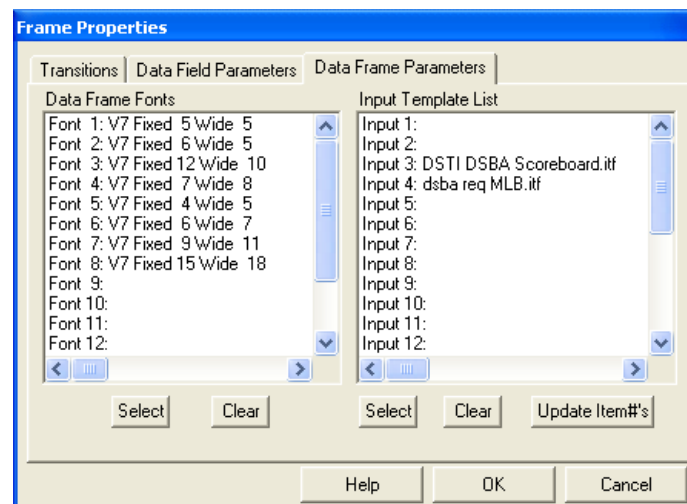
6. Click **Refresh** to view new data. If communication is successful, data will appear.



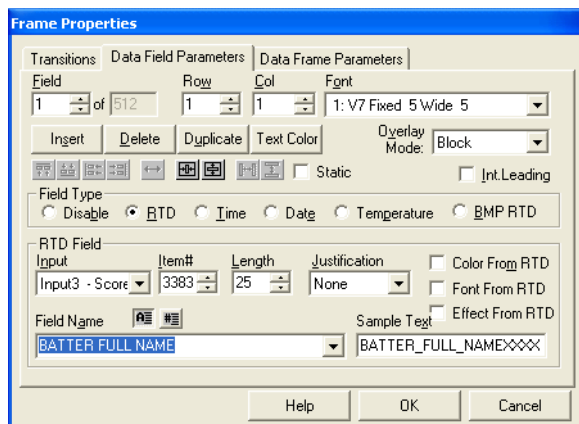
Create RTD Sequences

This section introduces creation of Venus 7000 RTD sequences. Follow the instructions below to add basic RTD fields to a sequence.

1. From the Venus 7000 Shell program, click **Edit**
2. In the *V7 Sequence Designer* window, go to **File > New**.
3. Select the sign and library in which to save the new sequence and type in descriptive *File Name* before clicking **OK**.
4. When the new sequence opens, go to **Frame > Insert > Data Frame**.
5. On the *Frame Properties* window, click on the **Data Frame Parameters** tab. Ensure the correct ITFs are selected for the current sport in use (refer to *Set Up RTD Inputs* above).



6. Click on the **Data Field Parameters** tab, and use the following instructions to add RTD fields to the display sequence:
 - a. Change the *Field Type* to **RTD**.
 - b. Select **Input 3** for scoreboard stats or **Input 4** for requested stats.
Note: As a general rule, do not insert scoreboard and requested stats in the same frame.
 - c. Select an RTD field from the *Field Name* list.
(Ex: BATTER FULL NAME)



- d. Position the RTD field by dragging the outline of the field to the desired location in the background.

Note: You can only move RTD fields when the *Frame Properties* window is open.

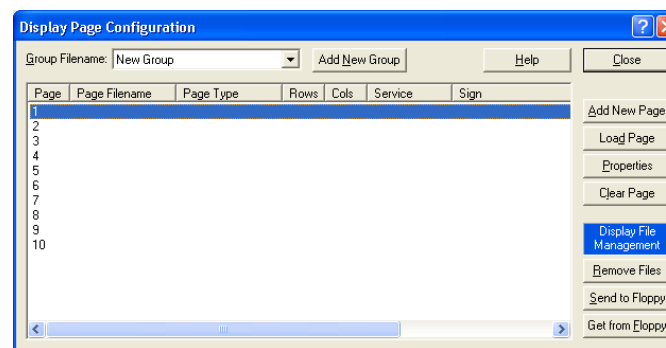
7. Insert additional RTD Fields by increasing the *Field* number and repeating step 6. Once all desired RTD fields are added, click **OK**.
8. Go to the first graphic frame of the sequence and delete it (**Frame > Delete**).
9. Go to **File > Preview** (or press [F5]) to preview the sequence.

Note: Stats do not appear for Input 4 unless the user performs a stat request (refer to the following section).

Stats Interface Page (Requested Stats)

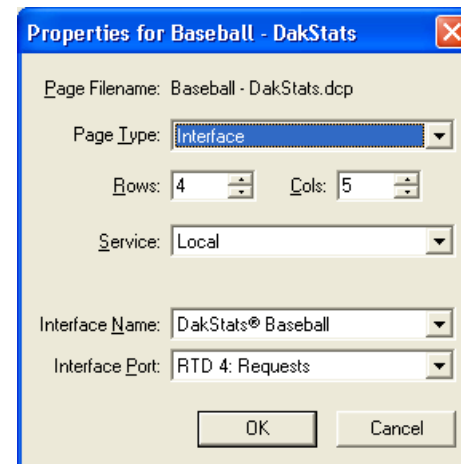
A Stats Interface Page requests stats for sequences that use Input 4. Before proceeding, create both a sequence that displays scoreboard stats (Input 3) and a sequence that displays requested stats (Input 4).

1. From the Venus 7000 Shell program, click **Display**.
2. Go to **View > Configure Pages**.
3. Select an empty slot and then click **Add New Page**.



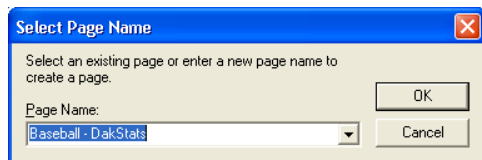
4. Type in a descriptive name for the page and then click **OK**.
5. On the display page properties window, select **Interface** as the *Page Type*.

Note: For scoreboard stats, select **Quick Display** instead.

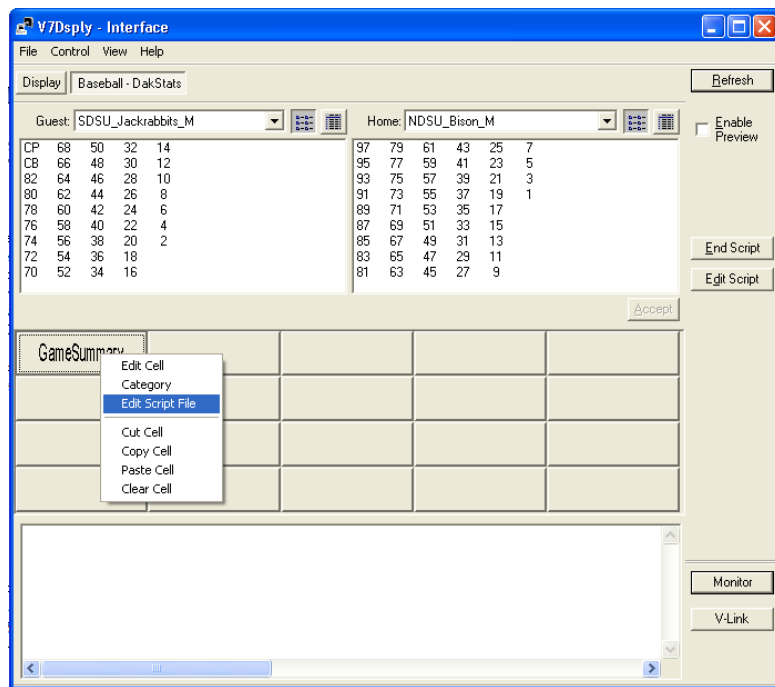


6. Enter the other appropriate settings for the Stats Interface Page and click **OK**.

7. Click **Close** to exit the *Display Page Configuration* window.
8. At the top of the window, there will now be a button with the same name that you entered for the display page. Click the button.



9. Select the *Guest* and *Home* teams and the player numbers of each roster will appear.
10. Below the rosters, right-click one of the empty buttons and select **Edit Cell**.
11. Enter a descriptive *Script* name for the RTD that will be displayed for the button, and then click **OK**.
12. Right-click the new button and select **Edit Script File**.



13. In the *Edit Script* window, click **Add Line**.
14. In the *Select Scripting Command* window, select one of the following RTD sequence commands:

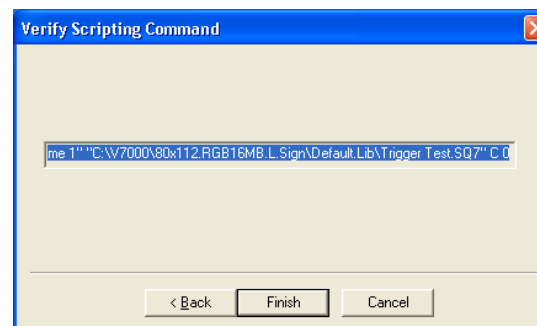
Command	Action
PlaySequence Or RTD PlaySequence	Plays a specified sequence; typically used for scoreboard feed statistics (Input 3) as well as non-RTD sequences & animations.
SelectStats	Prompts user to choose a team or player, then plays a specified sequence. Used to request stats for the requested stats feed (Input 4).

15. The remaining setup will vary based on the above selection. Refer to the appropriate section below.

PlaySequence Commands

Select the **PlaySequence** scripting option to display a sequence that contains RTD scoreboard stats (Input 3).

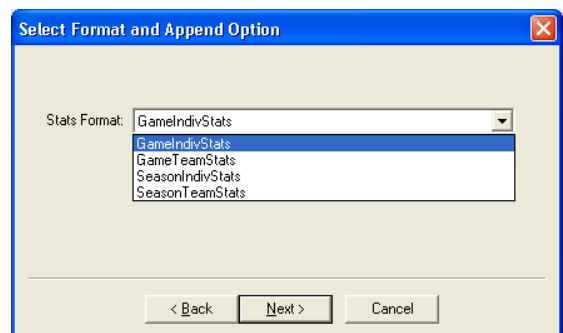
1. Click **Next**.
2. Click **Select Sign** to locate the proper sign on which the sequence will play, and then click **Next**.
3. Click **Select Path** to locate the sequence file to play, and then click **Next**.
4. Select a display *Mode* and then click **Next**.
5. Confirm the sequence settings are correct, and then click **Finish**.



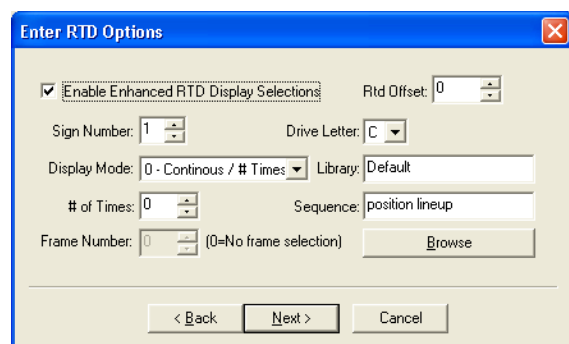
SelectStats Commands

Select the **SelectStats** scripting option to display a sequence that contains RTD requested stats (Input 4).

1. Click **Next**.
2. Select a *Stats Format*, and then click **Next**.



3. Check **Enable Enhanced RTD Display Selections**. Select the appropriate *Sign Number*, *Display Mode*, *Drive Letter*, *Library*, and *Sequence*. After selecting the desired settings, click **Next**.
4. On the *Enter Selections* window, you may select specific team/player names or leave them as **%Select** to choose them when the display button is clicked. After selecting the desired settings, click **Next**.



5. Confirm the stat display settings are correct, and then click **Finish**.

Once all of the commands have been added to the script file, click **Close** in the *Edit Script* window.

Testing Sequences

1. Click **Monitor**, located in the bottom-right corner of the *Display* window. In the Monitor window, select **View > Always on Top**.
2. Select the sign from the drop-down menu.
3. Click one of the script buttons you just set up. If the sequence assigned to the button is for requested stats, select the team/player as needed and then click **Accept**.
4. Verify the information appears correctly in the monitor window.