

This guide explains how to install a radio extension kit (Daktronics part # 0A-1196-0243) on an All Sport console. The radio extension is used to help ensure a better line-of-sight from the console to the scoreboard.

Note: Before beginning, ensure the All Sport console is unplugged!

1. With a Phillips screwdriver, *REMOVE* screws 1-2 and *LOOSEN* screws 3-4 as highlighted in **Figure 1** in order to take the top plate off the console. *Completely removing screws 3-4 may make reassembly difficult.*



Figure 1: Removing & Loosening Screws

2. With the back of the console facing you, gently lift the top plate of the console up and tilt it away from you, carefully resting it on the keypad as shown in **Figure 2**.

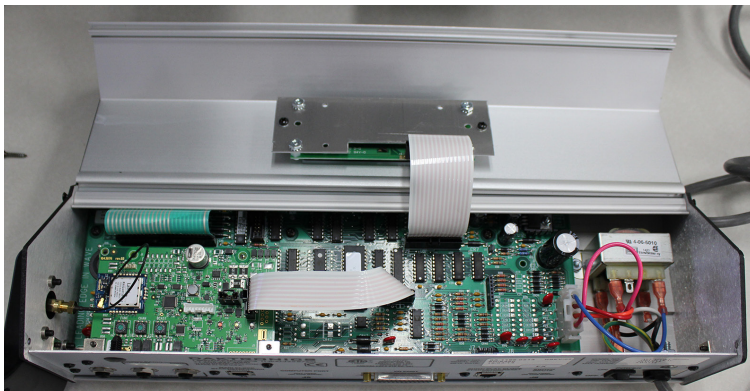


Figure 2: Console Top Open

3. Just above the RADIO label on the rear of the console is a black plastic plug (**Figure 3**). Use a pair of side cutters to cut the inside of the plastic plug off flush with the rear plate, and then discard the whole plug.

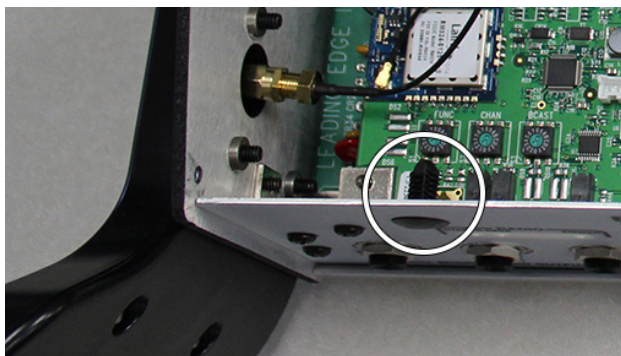


Figure 3: Plastic Plug

4. Inside the console on the left side is a brass antenna connector (**Figure 4**). Hold the nut closest to the little black wire in place with one 5/16 wrench, and use another 5/16 wrench to twist the nut closest to the side plate clockwise (away from you). Take care not to twist the little black wire too much as it may disconnect from the circuit board.

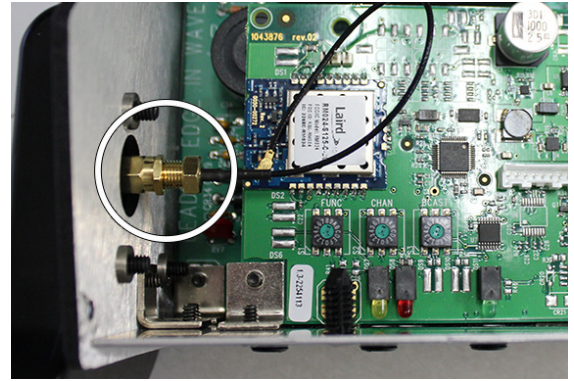


Figure 4: Antenna Connector

5. Move the connector into the hole in the rear of the console where the plastic plug was. Be sure to line up the flat edge of the connector threads with the notch in the top of the “D” hole. Slip on the washer and nut on the outside of the console, and then tighten the nut (**Figure 5**).

6. Open the antenna extension kit, and screw the female end of the extension cable onto the connector poking through the rear of the console (**Figure 6**).



Figure 5: Relocated Antenna Connector

7. Mount the L-bracket outside the press box within 20' (6 m) of the control console (*hardware not provided by Daktronics*). For optimum performance, ensure there is a clear line-of-sight between the L-bracket location and the radio-controlled scoreboard location(s).

If the 20' cable is too short, longer extensions are available. Be sure to use just one cable - do not connect them together.

8. Insert the male end of the extension cable into the center hole of the L-bracket, slip on the washer, and then tighten the nut (**Figure 7**). Be sure to line up the flat edge of the connector threads with the notch in the side of the “D” hole.



Figure 6: Antenna Extension Cable

9. Screw the radio antenna onto the connector on the L-bracket (**Figure 8**). Ensure it is pointed straight up.

10. Carefully lift the top plate of the console back into place, and then reinsert/tighten the four Phillips screws (two on each side) on the console as highlighted in **Figure 1**.

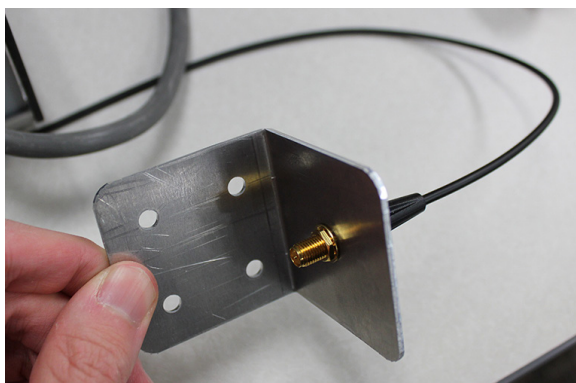


Figure 7: L-bracket with Antenna Extension



Figure 8: L-bracket with Antenna