

# **Aquatics Interface with Daktronics Matrix Displays**

## **Technical Guide**

*DD1387596*

*Rev 2 – 16 April 2012*

# **DAKTRONICS**

**DD1387596**  
**Rev 2 – 16 April 2012**

## **DAKTRONICS, INC.**

**Copyright © 2008-2012**

All rights reserved. While every precaution has been taken in the preparation of this manual, the publisher assumes no responsibility for errors or omissions. No part of this book covered by the copyrights hereon may be reproduced or copied in any form or by any means – graphic, electronic, or mechanical, including photocopying, taping, or information storage and retrieval systems – without written permission of the publisher.

*All trademarks used in this manual are property of their respective companies.*

# Table of Contents

---

<b>Section 1:</b>	<b>Introduction.....</b>	<b>1</b>
1.1	Manual Contents.....	1
1.2	Software Conventions.....	2
1.3	Timing Systems.....	2
1.4	Results Software.....	3
	Hy-Tek Swim Meet Manager.....	3
1.5	Message Displays/Controllers.....	3
	TimerInterface 2000.....	3
	SwimDive Request II.....	3
<b>Section 2:</b>	<b>OmniSport 2000 Connections Setup.....</b>	<b>5</b>
2.1	OmniSport 2000 Settings.....	5
2.2	Hy-Tek MEET MANAGER Settings.....	6
	Additional Hy-Tek for Extended Requests.....	7
2.3	Venus 7000 Control System.....	7
	SwimDive Request II.....	9
2.4	Venus 1500 Controlled Displays.....	9
	Input Template Files.....	9
<b>Section 3:</b>	<b>Daktronics Matrix Displays with Colorado Timing Systems.....</b>	<b>11</b>
3.1	Hy-Tek's MEET MANAGER Settings.....	11
3.2	Venus 7000 Control System.....	12
	Venus 7000 Settings.....	12
	SwimDive Request II.....	12
	TimerInterface 2000 Settings.....	13
3.3	Venus 1500 Control System.....	15
	Venus 1500 Real Time.....	15
	Display RTD Inputs.....	16
	Timer Interface 2000 Settings.....	17
<b>Section 4:</b>	<b>Daktronics Matrix Displays with Omega Timing Systems.....</b>	<b>19</b>
4.1	Hy-Tek MEET MANAGER.....	19
	Hy-Tek with the ARES 21 Set to Bi-directional.....	19
	OSM6 or ARES 21 Set to UNT4.....	20
4.2	Venus 7000 Settings.....	20
	Venus 7000 with ARES 21 Set to ERTD.....	20
	Venus 7000 with an OSM6 or ARES 21 Set to UNT4 Protocol.....	20
	SwimDive Request II.....	21
	TimerInterface 2000 Settings.....	21
<b>Section 5:</b>	<b>How to Create RTD Sequences.....</b>	<b>25</b>
5.1	Venus 7000.....	25
5.2	Venus 1500 Version 3.12.....	26

<b>Section 6:</b>	<b>Daktronics Exchange and Repair &amp; Return Programs.....</b>	<b>29</b>
6.1	Exchange Program.....	29
	Repair & Return Program.....	30
<b>Index</b>	<b>.....</b>	<b>31</b>
<b>Appendix A:</b>	<b>Reference Drawings.....</b>	<b>33</b>

# Section 1: Introduction

---

This manual explains aquatics interfaces with Daktronics matrix displays and includes the following sections:

- Section 1:** Covers the basic information about the program and this manual. Take time to read the introduction as it defines terms and explains concepts used throughout this manual.
- Section 2:** Briefly explains the setup, configuration and connections involved with the OmniSport 2000 timing system.
- Section 3:** Explains the setup, configuration and connections involved with a Colorado Timing Systems.
- Section 4:** Describes the setup, configuration and connections involved with an Omega Timing Systems.
- Section 5:** Illustrates how to create RTD sequences
- Section 6:** Offers details about who to contact for help with an application and information about the Exchange Program and the Repair & Return Program.
- Appendix A:** Contains drawings for system applications.

## 1.1 Manual Contents

This manual describes the data entries to send scoreboard data to a Daktronics system. Included are instructions for Hy-Tek, TimerInterface 2000, and SwimDive Request II when used with Daktronics, Omega, Colorado and generic timers. For other questions concerning this system, please contact Daktronics.

Listed below are a number of drawing types commonly used by Daktronics, along with the information that each is likely to provide. This manual may not contain all of these drawings.

*Figure 1* illustrates a Daktronics drawing label. The drawing number is located in the lower-right corner of a drawing. In the example, the drawing would be referred to as **Drawing A-69945**.

DAKTRONICS, INC. BROOKINGS, SD 57006		
PROJ: BASKETBALL		
TITLE: SEGMENTATION, 7 SEG BAR DIGIT		
DES. BY: BPETERSON		DRAWN BY: TNELSON
		DATE: 8 JUL 02
APPR. BY: AVB	7087-P08A-69945	
SCALE: 1 = 4		

**Figure 1:** Daktronics Drawing Label

Please list the model and serial number, and the date received in the blanks provided on the front page of this manual. When calling Daktronics customer service, have this information available to ensure the request is serviced as quickly as possible.

## 1.2 Software Conventions

The following terms are used to describe various mouse actions that can be used throughout this manual. These instructions are based on the standard, right-handed mouse configuration.

<b>Bold</b>	Any item that requires direct action, such as clicking, pressing, selecting or formatting, appears in boldface.
<i>Italics</i>	Indicates an item visible on the screen or within a menu. No direct action will be taken on this item. <b>Boldface Italics</b> are used to reference other manuals, sections within this manual and figures.
<b>[X]</b>	Represents a keyboard key that needs to be pressed.
“Quotes”	Items that need to be typed, including folder and file names.
Click	Press and release the left mouse button.
Double-click	Press and release the left mouse button twice.
Right-click	Press and release the right mouse button.
>	A caret indicates to click or move to one menu item after the other, (ex. <b>File &gt; Open</b> ).

Many OmniSport 2000 timer and Pro software options can be accessed with the keyboard as well as the mouse. Where applicable, both mouse and keyboard actions are given to perform a command. Many screen buttons have labels that have a letter underlined. Press the key on the keyboard that correlates with the underlined letter to activate that particular button. To activate secondary buttons, press the underlined key while holding **[Shift]**. To activate menu bar items from the keyboard, press the underlined key while holding **[Alt]**.

## 1.3 Timing Systems

The timing console determines how the system will be connected. Daktronics has developed standard interfaces for the Daktronics OmniSport 2000, CTS (4, 5, 6), Omega OSM6 and ARES 21. Which sport and the number of pools being used will determine how many inputs will be configured in the display control system.

The main questions are going to be:

- What type of timing system is being used?
- How many pools are there?
- Which sport is being timed?

## 1.4 Results Software

Information for this manual assumes Hy-Tek MEET MANAGER is being used. If a different program is being used instead of Hy-Tek, please consult the software provider and the local Daktronics representative.

### Hy-Tek Swim Meet Manager

Hy-Tek swimming software is used to display and edit events for a swimming meet, including seeding, meet program, scoring, reports, and diving events. Hy-Tek's MEET MANAGER software works with Daktronics equipment using two required add-ons and one optional add-on (see below). Existing applications of MEET MANAGER software can be updated to include both add-ons, see Hy-Tek's website at <http://hy-tek.com/>

- Timing Console INTERFACE is required to connect MEET MANAGER to timing consoles such as the OmniSport 2000, CTS System 6 or ARES 21 consoles.
- Alpha Scoreboard INTERFACE is required to send start lists, results by heat or event and scores to a matrix type display.
- Pro Network/Internet allows several Hy-Tek computers to be networked together. For larger meets where there is a second pool or the top 16 results are displayed, this is a necessary add-in.

## 1.5 Message Displays/Controllers

Daktronics message displays are either controlled by Daktronics Venus® 7000 or Venus® 1500 controller. Venus 1500 systems are more limited but are easier to operate and less expensive. In many cases if the customer has a Colorado Timing System (CTS) or Omega timing system it may cost less and make the system easier to operate if they update to an OmniSport 2000 timing system. Some programs used with message displays are SwimDive Request II and TimerInterface 2000.

### TimerInterface 2000

Daktronics TimerInterface 2000 software is an application that converts Omega Timing Systems or Colorado Timing Systems to RTD, which is information that is understood by a Daktronics matrix. For additional information, see "**Timer Interface Software Manual**" (ED-12452).

### SwimDive Request II

Daktronics SwimDive Request II is a program that allows the operator at the Venus 7000 or VPlay computer to request information from Hy-Tek's MEET MANAGER. Both MEET MANAGER and SwimDive can be configured to work with different timing systems and different types of scoreboard data. From the main menu click **Port**. A window labeled *SwimDive Setting* will open. About half-way down is a setting that is labeled *use with:*. Click the arrow to the right of the box to show the possible settings. As a tool to help configure the system look in the window directly under the *use with:* to read what the setting for the other pieces in the system needs to be for that configuration to work. Each different choice in the *use with:* will have a different system setting.





## Section 2: OmniSport 2000 Connections Setup

---

If getting the most out of a system while being easy to operate is important, the OmniSport 2000 timing system is the best choice. This section explains the setup of the OmniSport2000 timing console. Configuring Hy-Tek's MEET MANAGER to talk with the OmniSport 2000 and connect the OmniSport 2000 to the Venus 7000 or Venus 1500 controlled display. Refer to **DWG-0531161** for OmniSport 2000 system configurations.

### Reference Drawings

Omni 2000 System Configurations (Venus 7000).....	<b>Drawing B-531161</b>
Omni 2000 System to Galaxy via Wired Ethernet (Venus 1500) .....	<b>Drawing B-262403</b>
Omni 2000 System to Galaxy via Fiber Ethernet (Venus 1500) .....	<b>Drawing B-603918</b>

**Note:** Actual Com Port numbers may vary depending on which Com Ports are available on the computer in use.

### 2.1 OmniSport 2000 Settings

If the OmniSport 2000 console is sending data to a Venus 7000 or Venus 1500 controlled display, the console will be configured the same regardless. Every OmniSport 2000 console has two connections, one to MEET MANAGER and one to the Venus 7000 or 1500 controlled display.

1. Turn on the OmniSport 2000 timer and enter the date and time and select **Swimming**.

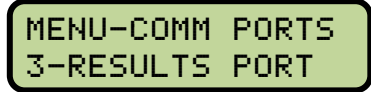
**Note:** If the OmniSport 2000 Pro Swimming software is being used, skip to **Step 3**.

2. From the Main Menu on the OmniSport 2000 console, press **[4] Setup > [4] Comm Ports > [2] RTD Port**. Verify the right LCD on the LCD OmniSport 2000 console displays *RTD Port: RTD*. If not press **[→]** once for the RTD setting. After the console is set to RTD, press **[Enter]**.



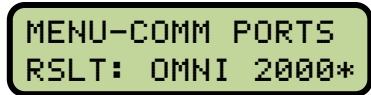
MENU-COMM PORTS  
RTD PORT: RTD\*

3. Line two on the right LCD screen will display *3-Results Port*. Press **[Enter]**.



MENU-COMM PORTS  
3-RESULTS PORT

4. Line two on the right LCD screen will display *RSLT: OMNI 2000*. If the LCD reads a different setting, press **[→]** until it reads *OMNI 2000* then press **[Enter]**.



MENU-COMM PORTS  
RSLT: OMNI 2000\*

5. Connect a **serial cable** from *J6 (Results)* on the back of the control console to a **Com Port** on the computer with Hy-Tek software.

## 2.2 Hy-Tek MEET MANAGER Settings

Every OmniSport 2000 console connects to a separate computer running Hy-Tek MEET MANAGER. In special situations when more information is needed, an additional feed direct from Hy-Tek to the Venus 7000 computer may be set up. For Extended Requests refer to **DWG-531161** for these settings. In order to run more than one computer with Hy-Tek MEET MANAGER, the Pro Network/Internet option must be purchased.

Configuring the Timing Console Interface to the OmniSport 2000 console:

1. From the main menu of MEET MANAGER, select **Set-up > Timing Console INTERFACE** (Figure 2).
2. Next select **Daktronics OmniSport 2000** from the list and click **OK**.

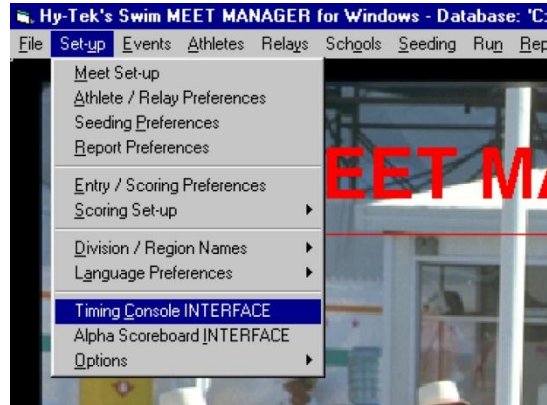


Figure 2: Hy-Tek's Swim MEET MANAGER

Configure the Alpha Scoreboard INTERFACE to Daktronics:

1. From the main menu of MEET MANAGER, select **Set-up > Alpha Scoreboard INTERFACE**.
2. Next, select **Daktronics** from the list and click **OK**.

Configure the Com Port in MEET MANAGER to connect the OmniSport 2000:

1. From the Run menu of MEET MANAGER, select **Interfaces > Timer (Dak 2) > Open / Close Serial Port for Dak 2** (Figure 3).

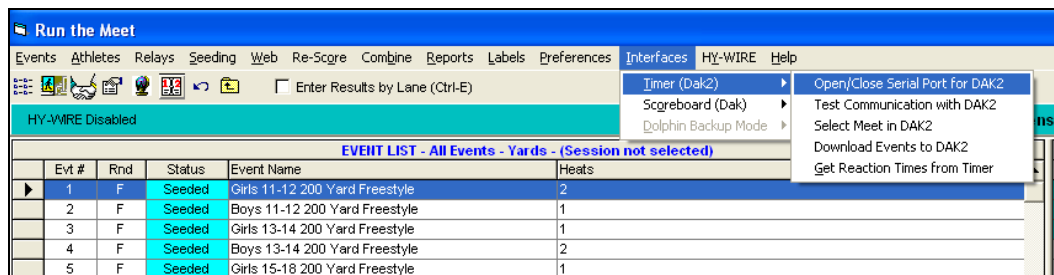


Figure 3: Run the Meet

2. Enter the Serial Com Port that will be used to connect MEET MANAGER to the OmniSport 2000 console then click OK (Figure 4).
3. As long as everything is connected and configured correctly, a window will appear displaying *Communications Passed*. If communication does not pass verify that the correct Com Port number was entered and the correct cable is connected to the OmniSport 2000 console and that it is powered on and in the *Swimming* mode.



Figure 4: Select Serial Port for DAK2

### Additional Hy-Tek for Extended Requests

In some instances, additional data may need to be posted without interrupting the current results. Setting up a direct connection through an additional Hy-Tek computer can achieve this. However, the connection from Hy-Tek to the Venus 7000 computer will be different. Instead of going through the OmniSport console, a null modem cable will connect a Com Port on the Hy-Tek computer to a Com Port on the Venus computer. Also, the Hy-Tek computers will be networked together and must have the Pro Network/Internet option. Refer to DWG-531161 for the settings.

## 2.3 Venus 7000 Control System

Refer to DWG-531161 for a general system layout with the OmniSport 2000 connected to a Venus 7000.

To set up the RTD inputs in the Venus 7000:

1. Click **Configure** from the Venus 7000 shell (Figure 5).
2. Click the **RTD Inputs** tab (Figure 6).
3. Double-click on the input needed to configure.



Figure 5: Venus 7000 Shell

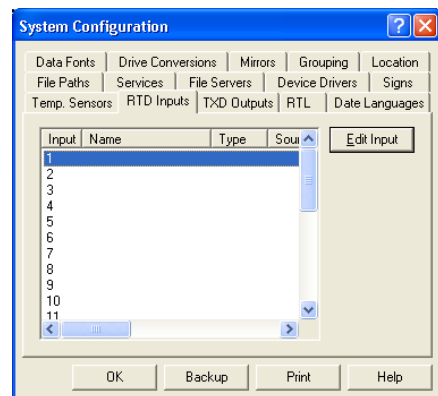
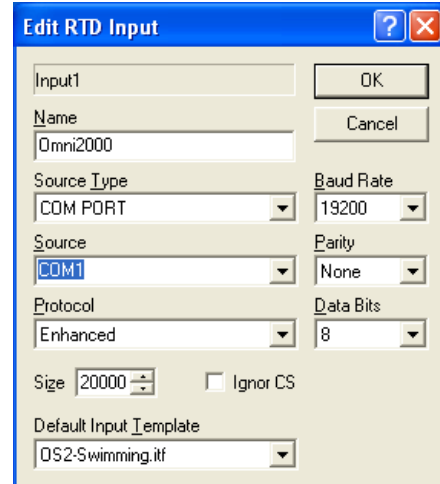


Figure 6: System Configuration

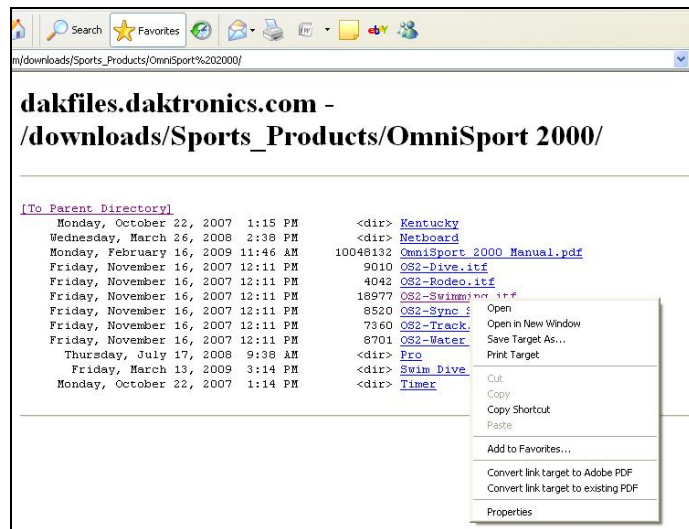
- Refer to the settings in *Figure 7* for an OmniSport 2000 console input. The only settings that change between inputs are the *Source* and possibly the *Default Input Template*. If an input for the Extended Requests needs to be set up, refer to **DWG-531161**.

An Input Template File (ITF) filters the data coming in on the input port and determines the start position and length of RTD fields in the data stream. To access and save the file, go to [http://dakfiles.daktronics.com/downloads/Sports\\_Products/OmniSport%202000/](http://dakfiles.daktronics.com/downloads/Sports_Products/OmniSport%202000/) and right-click the appropriate sport (*Figure 8*). Click *Save Target As...* and save as type *Input Template* in the "D:\V7000" folder.



**Figure 7: Edit RTD Input**

- Connect the J5 (RTD) connector on the OmniSport 2000 console to the desired RTD input on the Venus 7000 computer. In some instances the OmniSport console may be sitting next to the Venus 7000 computer and a W-1267 (9-pin male to female) cable can be used between the OmniSport console and a Com Port on the Venus computer.



**Figure 8: Save V7000 ITF File**

- In other instances, the OmniSport 2000 console and Venus computer may have some distance between them. In this case the OmniSport console may plug into a wall plate (J-box) at its location. The wiring from the OmniSport console's wall plate then runs to a wall plate at the Venus 7000 controller location. Due to the distance, current loop communications should be used. Connect a signal converter to the wall plate at the Venus 7000 control location and connect the Com Port on the Venus computer to the signal converter.

- Test communications.

Click **Diagnostics** from the Venus 7000 shell, select the **RTD** tab. Select the Input just created and click **Template View**. On the OmniSport console, start the time and view the time running in *Template View*. If the running time does not appear, check the settings and cable connection.

- To create the RTD display sequences, refer to **Section 5**.

## SwimDive Request II

1. From the main screen of the SwimDive Request II program (Figure 9), click the **Port** button near the bottom of the window to open the *SwimDive Setting* screen (Figure 10).

- *Port Number*: is the Venus 7000 RTD input number the OmniSport 2000 console is connected to (refer to Figure 6).
- *Port Name*: is any name for the selected port that makes sense to the user. Ex: *POOL 'A'*.
- *Sign Service*: when the Venus 7000 controller and SwimDive Request II are on the same computer, type “. ” (period) If SwimDive Request II is on a computer other than Venus 7000 computer, type the name of the desired network sign service to connect.
- *Use with* should display **OmniSport 2000**. If the system has been setup to have an additional Hy-Tek for extended Requests, see **DWG-531161** for the settings.

2. Test communications.

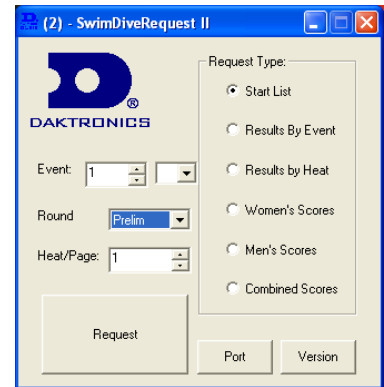


Figure 9: SwimDive Request II

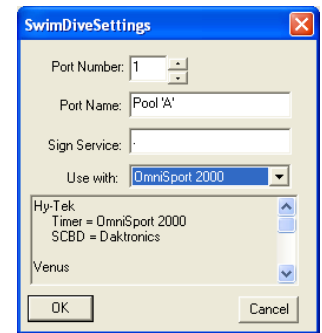


Figure 10: SwimDive Settings

From the Venus 7000 shell, click the **Diagnostics RTD** tab, select **Input** and click **Template View**. In SwimDive Request II, select **Start List** for Request Type and click **Request**. Information should come across in *Template View*. If not, check settings in the Venus 7000 computer and SwimDive Request II and check cable connections.

## 2.4 Venus 1500 Controlled Displays

The primary OmniSport 2000 console will be connected via current loop communications directly to TB1 pins 2 and 6 on the M2 or M3 Controller in the display. (M2 or M3 varies depending on the display model). Any additional OmniSport 2000 consoles will connect to the Ethernet network that is connected to the display. Refer to **DWG-262403** or **603918**.

### Input Template Files

An Input Template File (ITF) consists of multiple Real Time Data fields that select the start position and length of RTD fields in a data stream. To access and save these files, first go to [http://dakfiles.daktronics.com/downloads/Sports\\_Products/OmniSport%202000/](http://dakfiles.daktronics.com/downloads/Sports_Products/OmniSport%202000/).

Right-click the appropriate sport (Figure 8), then Click *Save Target As...* and save as type *Input Template* in “C:\Program Files\Daktronics\Common\Input Templates” (Figure 11).

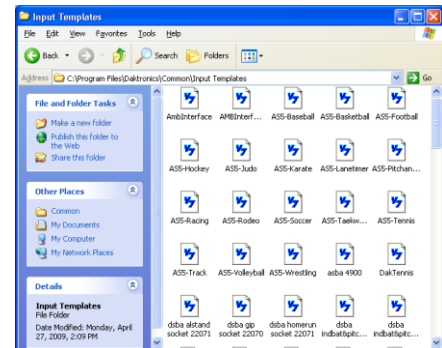


Figure 11: Venus 1500 ITFs

1. Using the *M2Config* application, verify the settings for ports 1-4. Select **Network > Configure Connection**. If there is a *Debug port setup*, make sure to delete it, as it will interfere with sending RTD.

**Port 1**

Type: Direct  
Baud Rate: (19,200 for Galaxy Displays)  
(115,200 for Galaxy Pro Displays)  
Number: 1  
Protocol: Venus 1500

**Port 2**

Type: TCP/IP  
Number: 3001  
Protocol: Venus 1500

**Port 3**

Type: UDP/IP  
Number: 3002  
Protocol: Daktronics RTD

**Port 4**

Type: Direct  
Number: 2  
Protocol: Daktronics RTD  
Baud Rate: 19,200

2. Connect the OmniSport 2000 RTD port to the display.
3. Test the connection from the OmniSport 2000 to the scoreboard display running an RTD sequence showing the running time from the console. Refer to *Section 5.2* on how to make Venus 1500 sequences.
4. If nothing shows on the display, check:
  - Is the sequence playing created by using a custom ITF (OS2\_swimming.ITF)?
  - Are the ports set up correctly for the display (see Step 3 above)?
  - Is it connected to the J5 (RTD) port on timing console?
  - Are the settings in the OmniSport 2000 console correct?
  - Does the wire terminate correctly in the J-box and on the display?
  - If the OmniSport 2000 console is connected via Ethernet, verify that everything is plugged in and set to the correct TCP/IP addresses.

## Section 3: Daktronics Matrix Displays with Colorado Timing Systems

---

This section assumes that the scoreboard output in the Colorado Timing System (CTS) timer is set to its default settings and that the CTS timer and Hy-Tek's MEET MANAGER are already communicating.

First the MEET MANAGER needs to be configured for communications to the Venus 7000 or Venus 1500 Real Time Data. After that there will be separate sub sections to configure the Venus 7000 or Venus 1500 controlled display.

### Reference Drawings:

Colorado Timing System Configurations.....	Drawing B-539079
Colorado Timer to Galaxy via Wired Ethernet.....	Drawing B-604064
Colorado Timer to Galaxy via Fiber Ethernet.....	Drawing B-604462
Colorado System 6 to Galaxy via Ethernet Show Control.....	Drawing B-1036117
Colorado Sys 6 to DMP-7000; with Auto Start List.....	Drawing B-1075312

**Note:** Actual Com Port numbers may vary depending on which Com Ports are available on the computers used.

### 3.1 Hy-Tek's MEET MANAGER Settings

For each timing console that is timing a swimming event, there will be a computer running Hy-Tek's MEET MANAGER. Each computer will provide the start list, results and team scores for that pool. In special situations where more information is needed, an additional feed direct from a second Hy-Tek computer to the Venus 7000 computer may be set up for *Extended Requests*. Refer to **DWG-0539079** for these settings.

**Note:** In order to run more than one computer with Hy-Tek's MEET MANAGER, the MEET MANAGER must have the Pro Network / Internet option installed.

1. Connect a null modem cable from the Hy-Tek computer to the Venus computer. If the distance is greater than 50-feet, signal converters will be required.
2. From the main screen in Hy-Tek, select **Set-up > Alpha Scoreboard INTERFACE**. Select **Generic Serial** from the list and click **OK** (Figure 12).
3. From the main menu in Hy-Tek, select **Run > Interface > Scoreboard (GENSER) > Configure Serial Port**.



Figure 12: Scoreboard Vendor

4. Enter the following information: *Baud Rate: 9600, Parity: Even, Data Bits: 7* and *Stop Bit: 1* (Figure 13).
5. From the *Run* screen in Hy-Tek, select **Interfaces > Scoreboard (GENSER) > Open / Close Serial Port for GENSER.** (Figure 14)

**Note:** Actual Com Port numbers may vary depending on which Com Ports are available on the computers used.

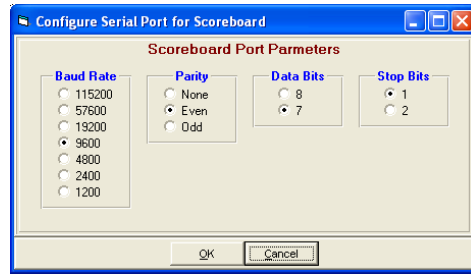


Figure 13: Configure Serial Port for Scoreboard

## 3.2 Venus 7000 Control System

Refer to **DWG-539079** for a general system layout with the CTS timer and Hy-Tek connected to a Venus 7000 control system.



Figure 14: Select Serial Port for GENSER

### Venus 7000 Settings

Configure the RTD inputs in the Venus 7000 computer from the Venus 7000 shell. Click **Configure** then select the **RTD Inputs** tab. Double-click on the desired Input to configure (Figure 6). Use the settings on **DWG-539079** to configure.

### SwimDive Request II

If more than one RTD input is being used for results, SwimDive Request II can be opened multiple times with the settings for each desired port (Figure 15).

1. *Port Number:* is the Venus 7000 RTD input that Hy-Tek is connected to.
2. *Port Name:* is any name for the selected port that makes sense to the user. Ex: *Pool A Results.*
3. *Sign Service:* is when the Venus 7000 and SwimDive Request II are on the same computer, type "." (period). If SwimDive Request II is on a computer other than Venus 7000, type the name of the desired network sign service to connect.

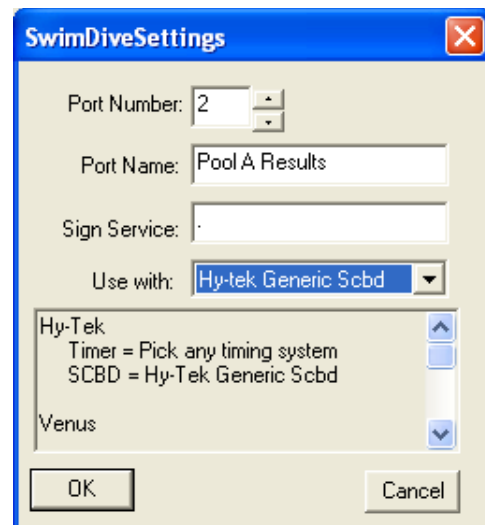


Figure 15: SwimDive Settings

4. *Use with:* should display **Hy-Tek Generic Scoreboard**. If the system has been set up to have an additional Hy-Tek for extended Requests see **DWG-539079** for the settings.



5. Test Communications.

From the Venus 7000 shell, click the **Diagnostics RTD** tab, select the **Input** created and click **Template View**. In SwimDive Request II, select **Start List** for Request Type and click **Request**. Information should come across in Template View. If not, check settings.

**TimerInterface 2000 Settings**

1. On the main menu of the Timer Interface 2000 program (*Figure 16*), click **Add** under the **INPUTS:** section.
2. The *Configure Input:* window will open (*Figure 17*).

Under the *Select Timer:* select **Colorado Timer** (*Figure 18*). Under *Select Port:* click **Edit**.

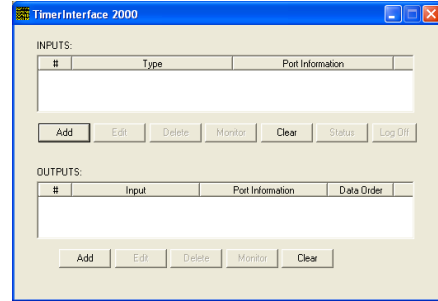
3. The *Enter Port Parameters* window will open (*Figure 19*).

Type the name of the input. For example: *CTS #1*. Under *Port Type:* Select **COM Port** (*Figure 20*).

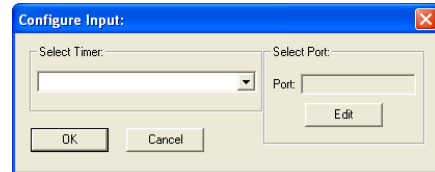
Select the *Port* that the timer is connected to and configure the settings as follows:

- Baud:* **9600**
- Parity:* **Even**
- Data Bits:* **8**
- Stop Bits:* **2**

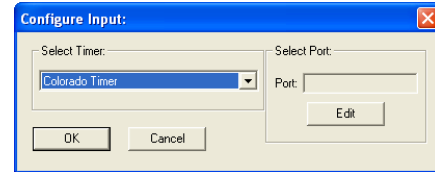
4. Click **OK** and the note shown in *Figure 21* will appear. Click **OK**. After configuring an input, shut down the TimerInterface 2000 program and then re-start it for all of the settings to take effect.



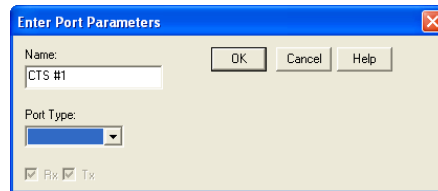
*Figure 16: TimerInterface 2000*



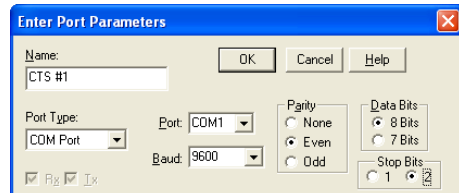
*Figure 17: Configure Input*



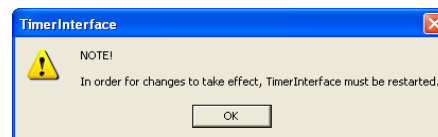
*Figure 18: Select Timer*



*Figure 19: Enter Port Parameters*

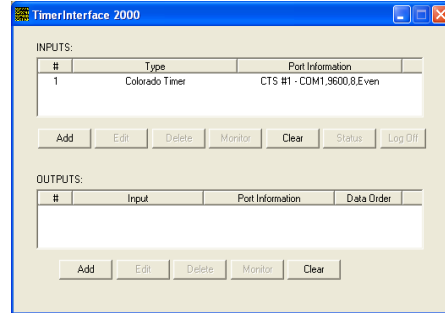


*Figure 20: Com Port Settings*



*Figure 21: Timer Interface Notification*

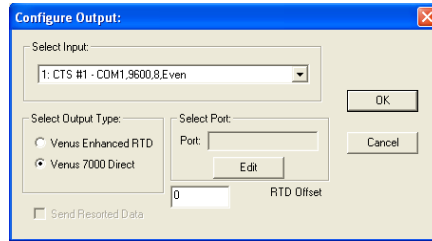
5. After opening the Timer Interface 2000 program again, click **Add** under the *OUTPUTS:* section (*Figure 22*).



**Figure 22:** TimerInterface 2000 with Input

6. The *Configure Output:* window will open (*Figure 23*).

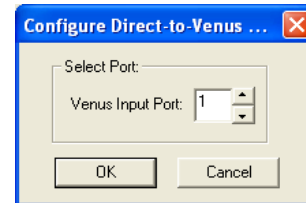
Under *Select Input:* select the previously configured input to receive the data. (Example: 1:CTS #1 - Com1,9600,8,Even)



**Figure 23:** Configure Output:

Under *Select Output Type:*, select **Venus 7000 Direct** then click **Edit** under *Select Port*.

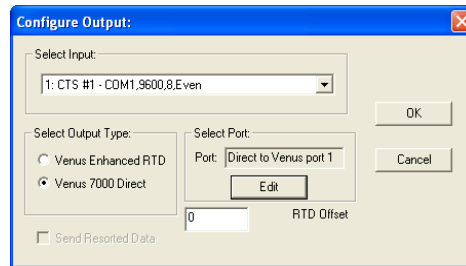
7. Select the Venus 7000 RTD input port to send the data to and click **OK** (*Figure 24*).



**Figure 24:** Select Input

8. Click **OK** in the *Configure Output:* window to accept the new settings (*Figure 25*).

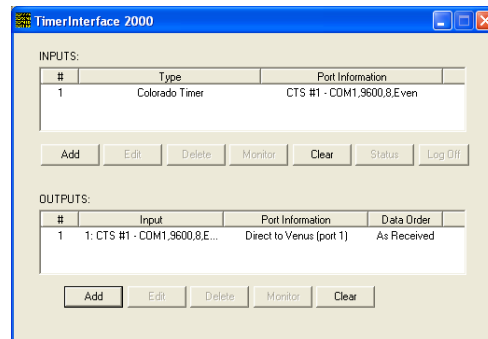
9. The note shown in *Figure 21* will appear. Click **OK**. After configuring an output, shut down the TimerInterface 2000 program and then re-start it for all of the settings to take effect.



**Figure 25:** Complete Output Settings

10. The TimerInterface 2000 screen shows each configured input and output (*Figure 26*).

For inputs from additional timing consoles, repeat steps 1-9, naming the next timer input *CTS #2* with the correct Com Port and RTD input settings. Refer to **DWG- 539079**.



**Figure 26:** TimerInterface with Input & Output

11. For input settings when connecting a CTS System 6 to a Galaxy display via Ethernet and Show Control System, refer to **DWG- 1036117**.

### 3.3 Venus 1500 Control System

Refer to DWG-604064 and DWG-604462 for general system layouts with the CTS timer and Hy-Tek connected to a Venus 1500 controlled display.

#### Venus 1500 Real Time

1. Connect a 9-pin female to a 9-pin female null modem cable from the Hy-Tek computer to the Venus 1500 (V1500) computer.
2. Open *V1500 Real Time* by selecting **V1500 Real Time** icon from the Venus 1500 shell (*Figure 27*).

**Note:** If the computer screen does not display the Venus 1500 Real Time icon, call Daktronics to request a USB software key contact Customer Support. Refer to **Section 6**.



The Venus 1500 Real Time Main screen will appear (*Figure 28*).

3. Double-click on Input 2 and click **Configure**.
4. On the *Input Properties* screen (*Figure 31*) click **Configure**. From the Configure Input window (*Figure 29*) select **Serial Com Port** and type in a descriptive name (Ex: "Pool A Results") then click **OK**.
5. Select the Com Port number that the 9-pin cable is plugged into on the V1500 machine as the port number to edit. Refer to *Figure 30* for the appropriate Com Port settings, and click **OK** when finished.



Figure 27: Venus 1500 Shell

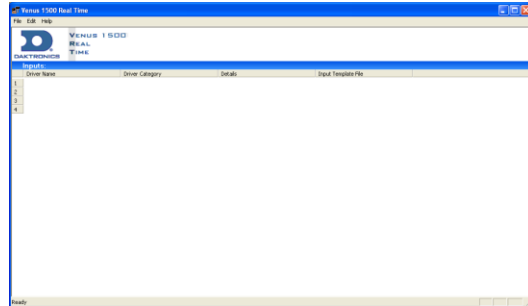


Figure 28: Venus 1500 Real Time

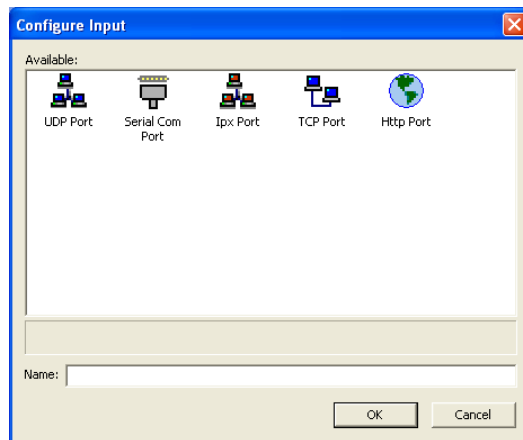


Figure 29: Configure Input

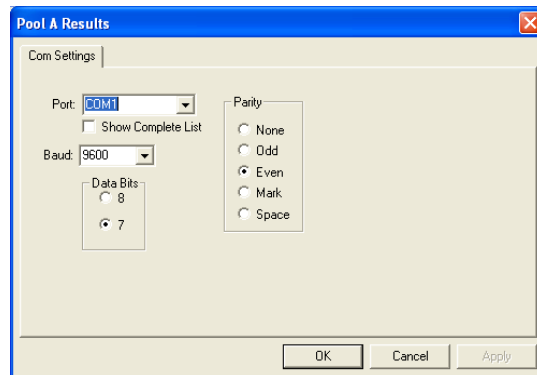


Figure 30: Com Settings

- Back on the *Input Properties* screen (Figure 31) click **ITF**.

The *Select Input Template* window (Figure 32) will open. Click the drop down button in the upper right corner and click browse.

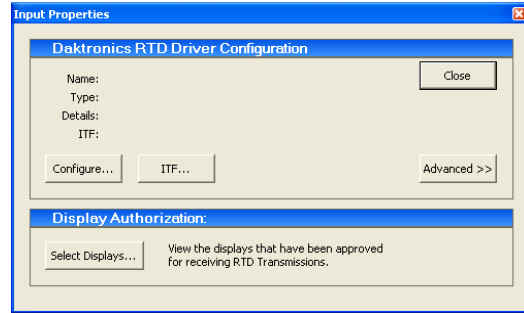


Figure 31: Input Properties

- Navigate to "C:\ProgramFiles\Daktronics\Common\Input\Templates" and select **HygenericStartResults.itf**. If this file does not show up on the list it will need to be copied into the directory. Click **OK**.
- From the *Input Properties* screen (Figure 31) click **Select Displays**. Select the display that the data will be displayed on. Click the arrow to move it into the column labeled *Authorized for RTD Input* then click **Close**.
- If there is a second Hy-Tek computer, repeat **Steps 1-7** but be sure to assign it to **Input 4**.

### Display RTD Inputs

Use *M2Config* to connect to the sign and verify the ports are set correctly.

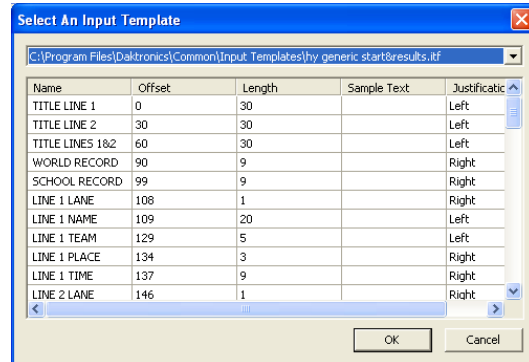


Figure 32: Select An Input Template

#### Port 1

Type: Direct  
 Baud Rate: (19,200 for Galaxy displays)  
 (115,200 for Galaxy Pro displays)  
 Number: 1  
 Protocol: Venus 1500

#### Port 2

Type: TCP/IP  
 Number: 3001  
 Protocol: Venus 1500

#### Port 3

Type: UDP/IP  
 Number: 3002  
 Protocol: Daktronics RTD

#### Port 4

Type: Direct  
 Number: 2  
 Protocol: Daktronics RTD  
 Baud Rate: 19,200

## Timer Interface 2000 Settings

1. From the main menu of the *Timer Interface 2000* program (**Figure 16**), click **Add** under the *INPUTS:* section.

The *Configure Input:* window will open (**Figure 17**).

2. Under the *Select Timer:* select **Colorado Timer** (**Figure 18**).

Under *Select Port:* click **Edit**.

3. The *Enter Port Parameters* window will open (**Figure 19**).

Type the name of the input. For example, *CTS #1*.

Under *Port Type:* Select *COM Port*.

Select the Com Port that the timer is connected to and configure the **Baud** to **9600**, *Parity* to **Even**, *Data Bits* to **8** and *Stop Bits* to **2**.

4. Click **OK** and the note shown in **Figure 21** will appear. Click **OK**. After configuring an input, shut down the *TimerInterface 2000* program and then re-start it for all of the settings to take effect.

5. After opening the *Timer Interface 2000* program again, click **Add** under the *OUTPUTS:* section (**Figure 22**).

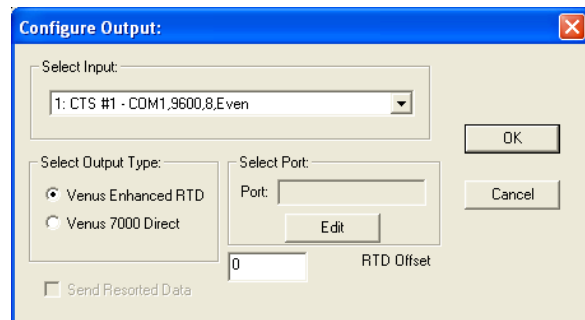
6. The *Configure Output:* window will open (**Figure 33**).

Under *Select Input:* select the previously configured input to receive the data. (Example: 1:CTS #1 - Com1,9600,8,Even)

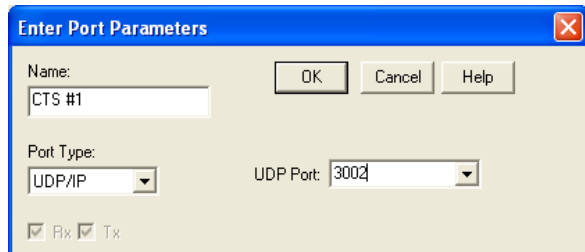
Under the *Select Output Type:* select **Venus Enhanced RTD**. Next, click **Edit** under *Select Port*.

7. The *Enter Port Parameters* window will open (**Figure 34**).

Type the name of the output. (Example: CTS #1)



**Figure 33:** *Configure Output:*

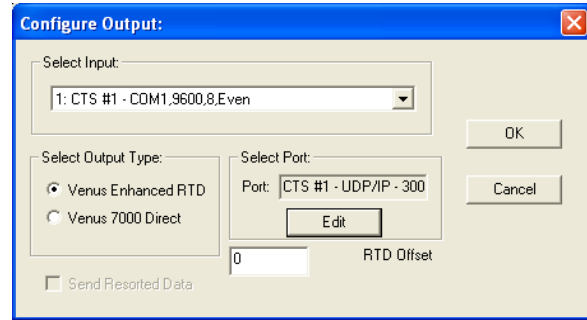


**Figure 34:** *Enter Port Parameters*

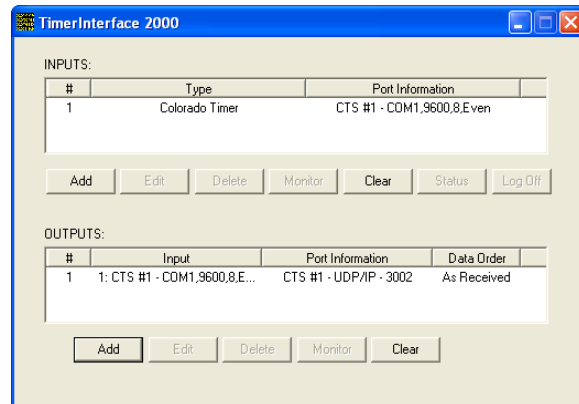
Under *Port Type*: select **UDP/IP**.

Under *UDP Port*, type in **3002**.

8. Click **OK** in the *Configure Output*: window to accept the new settings (*Figure 35*).
9. The note shown in *Figure 21* will appear. Click **OK**. After configuring an output, shut down the TimerInterface 2000 program and then re-start it for all of the settings to take effect.
10. The TimerInterface 2000 screen shows each configured input and output (*Figure 36*).
11. To set up additional timing consoles, repeat step 1-10, naming the next timer input *CTS #2* and enter an offset value of **10000** for the *RTD Offset* in the output configuration (*Figure 33*).



**Figure 35:** Complete Output Settings



**Figure 36:** TimerInterface 2000 Main Menu

## Section 4: Daktronics Matrix Displays with Omega Timing Systems

---

When interfacing an Omega timing system to a Daktronics matrix scoreboard, the timer in use needs to be identified. The timing console can be an OSM6 or an ARES 21. If the console is an ARES 21 the next question is going to be if there is anything else connected to the scoreboard port and if yes, what is it?

In the following sections, use the questions above to identify how to connect and configure the equipment to show information on the Daktronics matrix display.

### Reference Drawing:

Omega Timing System Configurations..... **Drawing C-536240**

**Note:** Actual Com Port numbers may vary depending on which Com Ports are available on the computers used.

### 4.1 Hy-Tek MEET MANAGER

For each timing console in use during a swimming event, there will be a computer running Hy-Tek MEET MANAGER. Each computer will provide the start list, results and team scores for that pool. In special situations where more information is needed, an additional feed direct from a second Hy-Tek computer to the Venus 7000 may be set up for *Extended Requests* Refer to **DWG-536240**.

In order to run more than one computer with Hy-Tek MEET MANAGER, the MEET MANAGER system must have the Pro Network / Internet option installed.

If the timing console being used is an ARES 21 with the scoreboard port set to Daktronics ERTD, refer to the following section. If the timing console is an OSM6 or ARES 21 with the scoreboard port set to UNT4 protocol, refer to the OSM6 or ARES 21 set to UNT4 section.

#### Hy-Tek with the ARES 21 Set to Bi-directional

1. From the main menu of Hy-Tek MEET MANAGER, select **Set-up > Timing Console INTERFACE**. Select **ARES 21 Bi-Directional** from the list and click **OK**.
2. From the main menu select **Set-up > Alpha Scoreboard INTERFACE**. Select **Daktronics** from the list and click **OK**.
3. To test communications, select **Run** from the Hy-Tek main menu. Click **Interface > Timer Dak... > Open/Close Serial Port for Dak2**. Enter the Com Port number used to connect Hy-Tek to the control console and click **OK**. If everything is configured correctly a window will appear showing communications passed.

## OSM6 or ARES 21 Set to UNT4

1. Connect a null modem cable from the Hy-Tek computer to the Venus computer. If the distance is greater than 50-feet, a signal converter will be required.
2. From the main screen in Hy-Tek, select **Set-up > Alpha Scoreboard INTERFACE**. Select **Generic Serial** from the list and click **OK** (Figure 12).
3. From the main menu in Hy-Tek, select **Run > Interface > Scoreboard (GENSER) > Configure Serial Port**.

Enter the following information: *Baud Rate: 9600, Parity: Even, Data Bits: 7 and Stop Bit: 1* (Figure 13).

4. From the *Run* screen in Hy-Tek, select **Interfaces > Scoreboard (GENSER) > Open / Close Serial Port for GENSER** (Figure 14).

## 4.2 Venus 7000 Settings

If the timing console being used is an ARES 21 with the scoreboard port set to ERTD protocol, refer to the following section. If the timing console is an OSM6 or ARES 21 set to UNT4 protocol, refer to the OSM6 or an ARES 21 set to UNT4 protocol section.

### Venus 7000 with ARES 21 Set to ERTD

Refer to **DWG-536240** for a general system layout with the Omega timers and Hy-Tek connected to a Venus 7000 control system. On the drawing there are two options for the timing consoles in the Pool A and Pool B sections. If the ARES 21 scoreboard output is set to ERTD, use Option 1 settings. SwimDive Request II is not available with this setup.

1. Configure the RTD inputs in the Venus 7000. From the Venus 7000 shell, click **Configure** and select the **RTD Inputs** tab. Double-click on the desired Input to configure. Use the settings as shown on **DWG-536240**.
2. Connect the ARES 21 SCBD port to the signal converter connected to the Venus RTD Input 1. It is recommended to use current loop communications between the ARES 21 and Venus 7000.
3. To test the system communication, select **Diagnostics** from the Venus 7000 shell. Click **RTD** and the RTD input then select **Template View**. On the Omega timer, start the time and the running time should come across in *Template View*. If not, check the settings and cable connection.

### Venus 7000 with an OSM6 or ARES 21 Set to UNT4 Protocol

Refer to **DWG-536240** for a general system layout with the Omega timers and Hy-Tek software connected to a Venus 7000 control system. On the drawing there are two options for the timing consoles in the Pool A and Pool B locations. If the timing console is an OSM6 or an ARES 21 with the scoreboard output set to UNT4, use the Option 2 settings.

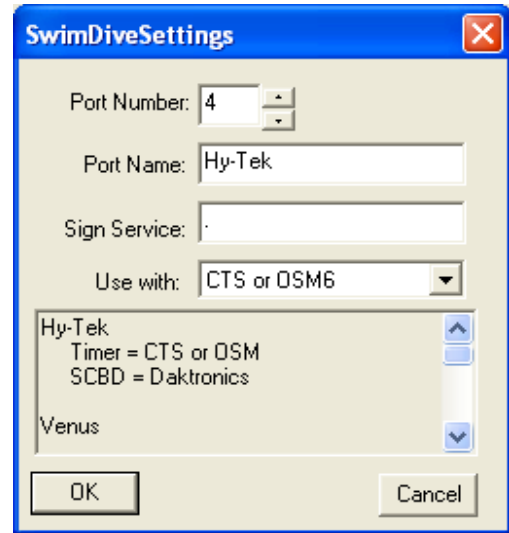


To configure the RTD inputs in the Venus 7000 computer, click **Configure** from the Venus 7000 shell and select the **RTD Inputs** tab. Double-click the desired Input to configure. Refer to **DWG-0536240** for the appropriate input port settings.

## SwimDive Request II

If more than one RTD input is being used for results, SwimDive Request II can be opened multiple times with the settings for each desired port (*Figure 37*).

1. *Port Number*: is the Venus 7000 RTD input that Hy-Tek is connected to.
2. *Port Name*: any name for the selected port that makes sense to the user. Ex: *Pool A Results*.
3. *Sign Service*: is when the Venus 7000 and SwimDive Request II are on the same computer, type "." (period). If SwimDive Request II is on a computer other than Venus 7000 computer, type the name of the desired network sign service to connect.



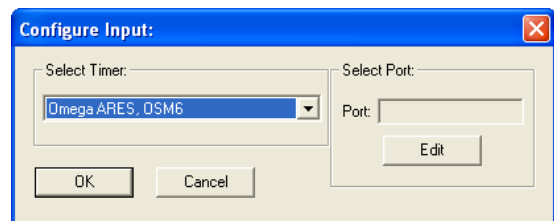
**Figure 37:** Swim Dive Settings

4. *Use with*: instead of showing **Hy-Tek Generic Scbd**, the *Use with* drop down box should show **CST or OSM6** when using the Omega system. If the system has been set up with an additional Hy-Tek computer for Extended Requests, see **DWG-536240** for the settings.
5. Test communications.

From the Venus 7000 shell, click the **Diagnostics RTD** tab, select the **Input** created and click **Template View**. In SwimDive Request II, select **Start List** for Request Type and click **Request**. Information should come across in Template View. If not, check the settings.

## TimerInterface 2000 Settings

1. From the main menu of the Timer Interface 2000 program (*Figure 16*), click **Add** under the *INPUTS*: section.
2. The *Configure Input*: window will open (*Figure 17*).



**Figure 38:** Configure Input

Under the *Select Timer*: select **Omega ARES, OSM6** (*Figure 38*). Under *Select Port*: click **Edit**.

3. The *Enter Port Parameters* window will open (*Figure 39*). Type the name of the input, for example *Omega #1*.

Under *Port Type*: select *COM Port*. Select the Com Port that the timer is connected to and configure the Baud to *9600*, Parity to *Even*, Data Bits to *7* and Stop Bits to *2* (*Figure 40*).

4. Click **OK** and the note shown in *Figure 21* will appear. Click **OK**. After configuring an input, shut down the *TimerInterface 2000* program and then re-start it for all of the settings to take effect.

5. After opening the *Timer Interface 2000* program again (*Figure 41*), click **Add** under the *OUTPUTS*: section.

6. The *Configure Output*: window will open (*Figure 42*).

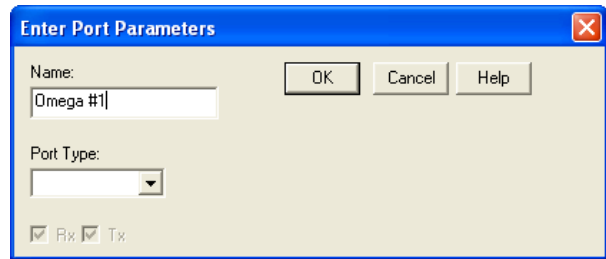
From the *Select Input*: section, select the input to get data from. (Example: 1: Omega #1 - Com 5,9600,7,Even)

Under *Select Output Type*: select **Venus 7000 Direct**. Next, click on the **Edit** button under *Select Port*.

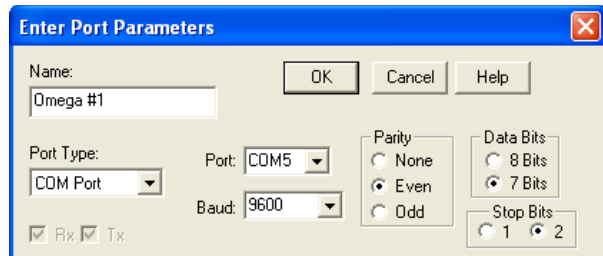
7. Use the spinner control to select the *Venus 7000 RTD* input to send data to and click **OK**.

8. Click **OK** in the *Configure Output*: window to accept the new settings.

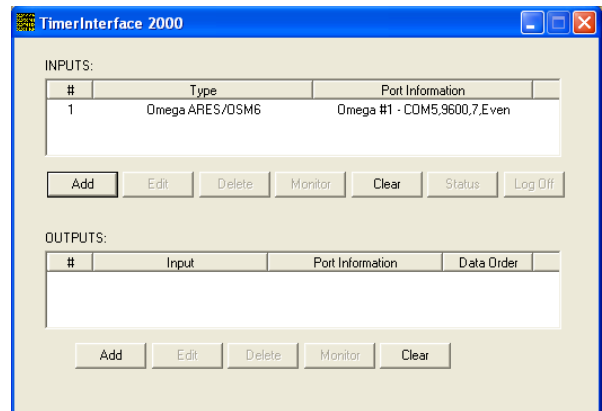
9. The note shown in *Figure 21* will appear. Click **OK**. After configuring an output, shut down the *TimerInterface 2000* program and then re-start it for all of the settings to take effect.



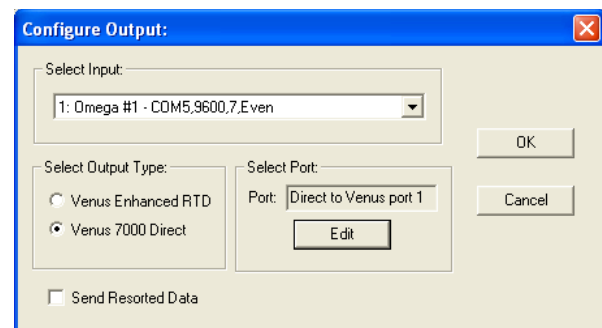
**Figure 39: Enter Port Parameters**



**Figure 40: Enter Port Parameters**



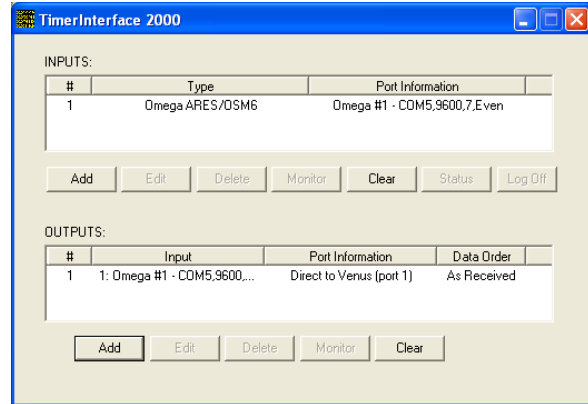
**Figure 41: TimerInterface 2000 with Input**



**Figure 42: Configure Output:**

10. The TimerInterface 2000 screen shows each configured input and output (*Figure 43*).

For inputs from additional timing consoles, repeat steps 1-9, naming the next timer *Omega #2* with the correct com port and RTD input settings. Refer to **DWG-536240**.



**Figure 43:** *TimerInterface 2000*

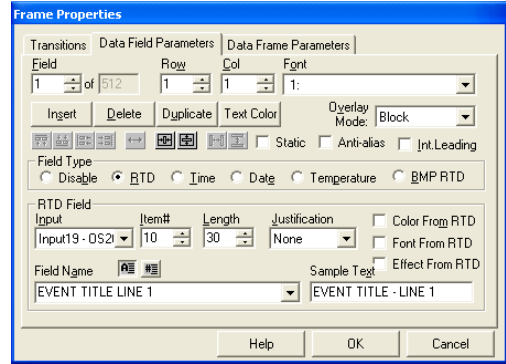


# Section 5: How to Create RTD Sequences

## 5.1 Venus 7000

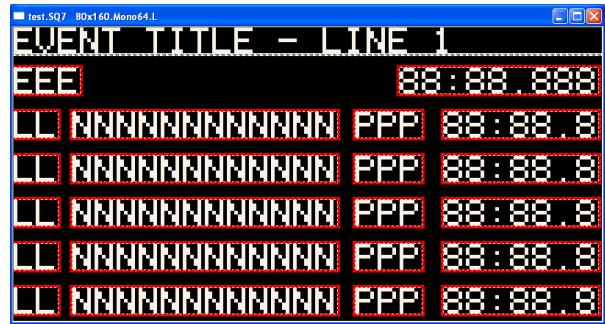
1. Refer to *Section 2.3* to verify the necessary Input Template Files are installed.
2. Open the *V7 Sequence Designer* and create a new sequence for the appropriate sign (**File** → **New**).

3. Go to **Frame** > **Insert** > **Data Frame**.
4. In the *Frame Properties* window (*Figure 44*), select the **Data Field Parameters** tab. Make sure the *Field Type* is set to **RTD** then select a previously created *Input*, either for the timer or for the Hy-Tek computer.



**Figure 44: Frame Properties**

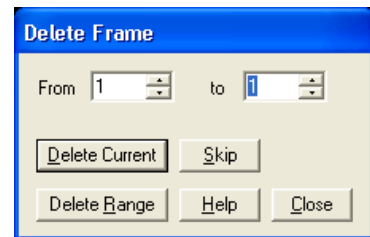
5. Under *Field Name*, select from the list of available information. Use the *Row* and *Col* numbers (or click on the sequence) to adjust the position of the data field.
6. To add another data field, simply increment *Field* in the top left corner of the *Frame Properties* window.




**Figure 45: V7 Swimming Sequence**

- Figure 45* shows a complete example of a Venus 7000 swimming sequence.
7. After creating all of the required fields for the data frame, click **OK**. The sequence now contains two frames: the original *Graphic Frame* and the new *Data Frame*; the first *Graphic Frame* must be deleted.

Go to **Frame** > **Delete** (or press **[Ctrl + Del]**). Then select the range **1 to 1** (*Figure 46*). Click **Delete Range** and then click **Close**. There should now only be one frame, the *Data Frame* and the RTD fields it contains.



**Figure 46: Delete Frame**

8. Click the preview button  (or press **[F5]**). As long as the input source is powered on and in operation, the correct data should show up in the proper location on the sequence. Make any adjustments to the RTD fields or input connections as needed.
9. Save the sequence.

## 5.2 Venus 1500 Version 3.12

1. Begin by opening the *V1500 Message Studio* from the V1500 shell. Select **File > New** and select the sign for the new RTD sequence.
2. Next, a *Graphic Frame* must be added. To do this, select menu item **Frame >Add > Graphic**. *Graphic Frames* are preferred for RTD because they allow positioning of the RTD boxes exactly where the user desires.

**Note:** In the *Sample Text* field, the user can enter the text that will help to identify the information to show on the frame. By default, the data fields show “S’s” as sample text.

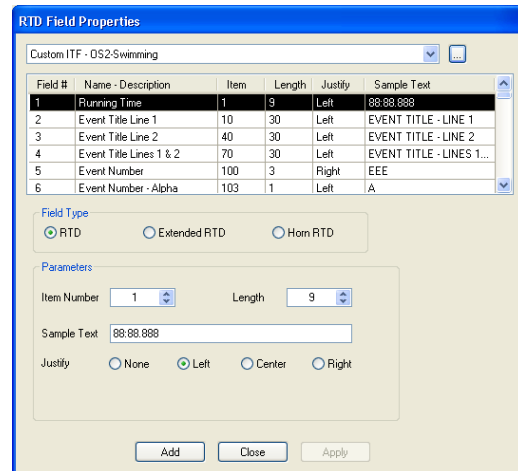
The *Justify* option buttons will override the justification settings in the ITF file. This feature is available only when inserting an RTD field in a graphic frame for display with Version 3 controllers.

3. To add an RTD field, go to **Data Fields > Real Time Data**, or select the **RTD** icon from the left hand pane.



Click anywhere in the *Graphic Frame* and an *RTD Field Properties* window will open.

4. At the top, click the drop-down list box and select a previously configured input. Alternately, select **Custom ITF** and then the browse button. Search for and select the correct ITF for the sport/interface and then click **OK**.

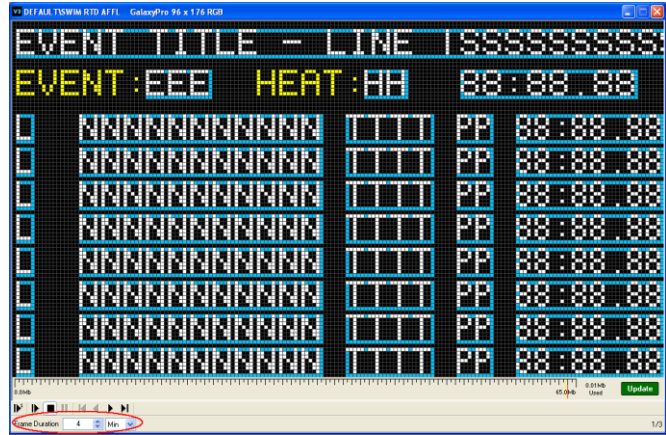


**Figure 47:** Add RTD Field

After selecting an input or Custom ITF, a list of available data from the port will populate (*Figure 47*). Once the desired field type and parameters are chosen, click **Add** to set the field to the frame. Then click **Close** and change the style and alignment of the field boxes inside the frame. The user can now preview the frame but only as long as the input source is powered on and in operation.

Refer to *Figure 48* as an example of a swimming sequence.

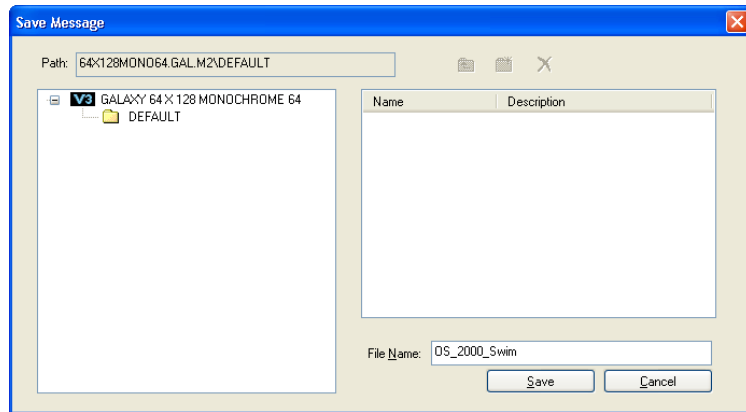
5. On the right there should be a story board with two frames, a blank *Text Frame* and a second *Graphic Frame* with RTD information. The first frame must be deleted in order for the sequence to display correctly. At the story board, right click on the blank **Text Frame** > **Delete Frame(s)**. There should only be one frame left: the *Graphic Frame* with RTD information.



**Figure 48:** Swimming Sequence Example

6. The frame duration should also be changed from a couple seconds to a couple hours; this ensures the running time will not skip. In the lower left hand corner of the frame, see where it says *Frame Duration*, change the [Min] to [Hr].
7. To save the message:

- Open the *File* menu and select **Save**.
- In the **Save Message** dialog box, click on the plus sign next to the display type to open the library containing the folders.
- Select the folder where the message will be saved in and type in the name, for example “OS\_2000\_Swim” (*Figure 49*).
- Click **Save**.



**Figure 49:** Save Message





# Section 6: Daktronics Exchange and Repair & Return Programs

---

## 6.1 Exchange Program

The Daktronics Exchange Program is a quick, economical service for replacing key components in need of repair. If a component fails, Daktronics sends a replacement part to the customer who, in turn, returns the failed component to Daktronics. This not only saves money but also decreases equipment downtime. Customers who follow the program guidelines explained below will receive this service.

### *Before Contacting Daktronics*

Identify these important numbers:

Display Serial Number: \_\_\_\_\_  
Display Model Number: \_\_\_\_\_  
Contract Number: \_\_\_\_\_  
Date Installed: \_\_\_\_\_  
Daktronics Customer ID Number: \_\_\_\_\_

To participate in the Exchange Program, follow these steps.

**1. Call Daktronics Customer Service.**

Market Description	Customer Service Number
Schools (primary through community/junior colleges), religious organizations, municipal clubs and community centers	877-605-1115
Universities and professional sporting events, live events for auditoriums and arenas	866-343-6018

**2. When the new exchange part is received, mail the old part to Daktronics.**

If the replacement part fixes the problem, send in the problem part which is being replaced.

- a. Package the old part in the same shipping materials in which the replacement part arrived.
- b. Fill out and attach the enclosed UPS shipping document.
- c. Ship the part to Daktronics.

**3. A charge will be made for the replacement part immediately, unless a qualifying service agreement is in place. In most circumstances, the replacement part will be invoiced at the time it is shipped.**

If the failed part or replacement part is not returned to Daktronics within 3 weeks of the ship date, Daktronics will assume that the customer is purchasing the replacement part and will send an invoice for the value of the new sale part.

If the part or parts are returned within 2 weeks of the second invoice date, Daktronics will credit the customer for the second invoice. If after 2 weeks Daktronics has still not received the parts back, the customer must pay the second invoice and will not be credited for the return of the failed part.

## **Repair & Return Program**

For items not subject to exchange, Daktronics offers a Repair & Return Program. To send a part for repair, follow these steps:

- 1. Call or fax Daktronics Customer Service:**  
Refer to the appropriate market number in the chart listed on the previous page.
- 2. Receive a Return Materials Authorization (RMA) number before shipping.**  
This expedites repair of the part.
- 3. Package and pad the item carefully to prevent damage during shipment.**  
Electronic components, such as printed circuit boards, should be placed in an antistatic bag before boxing. Daktronics does not recommend using packing 'peanuts' when shipping.
- 4. Enclose:**
  - name
  - address
  - phone number
  - the RMA number
  - a clear description of symptoms

### *Shipping Address*

Daktronics Customer Service  
RMA #  
201 Daktronics Drive, Dock E  
Brookings, SD 57006

**Fax:** 605-697-4700

# Index

---

	<b>E</b>		
Extended requests			
Hy-Tek.....			7
	<b>O</b>		
OSM6			
Setup .....			22
	<b>P</b>		
Port settings			
Venus 1500 .....			10
	<b>S</b>		
Settings			
Hy-Tek.....			6, 13, 21
		OmniSport 2000 .....	5
		SwimDive Request II .....	9, 14, 23
		TimerInterface 2000 .....	15, 23
		Venus 1500 .....	17
		Venus 7000 .....	7, 14, 22
		<b>T</b>	
		Test communication	
		Hy-Tek .....	21
		SwimDive Request II .....	9, 23
		Venus 7000 .....	9, 22



## **Appendix A: Reference Drawings**

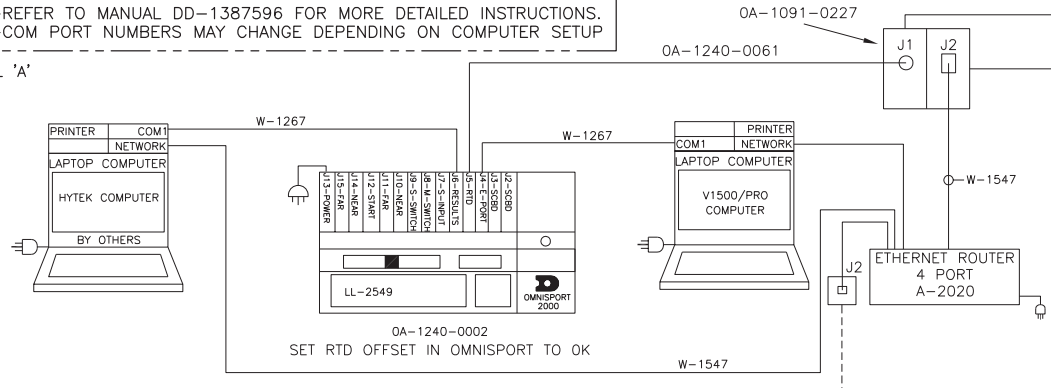
---

Omni 2000 System to Galaxy via Wired Ethernet (Venus 1500) .....	<b>Drawing B-262403</b>
Omni 2000 System Configurations .....	<b>Drawing B-531161</b>
Omega Timing System Configurations .....	<b>Drawing C-536240</b>
Colorado Timing System Configurations .....	<b>Drawing B-539079</b>
Omni 2000 System to Galaxy via Fiber Ethernet (Venus 1500) .....	<b>Drawing B-603918</b>
Colorado Timer to Galaxy via Wired Ethernet .....	<b>Drawing B-604064</b>
Colorado Timer to Galaxy via Fiber Ethernet .....	<b>Drawing B-604462</b>
Colorado System 6 to Galaxy via Ethernet Show Control .....	<b>Drawing B-1036117</b>
Colorado Sys 6 to DMP-7000; with Auto Start List .....	<b>Drawing B-1075312</b>



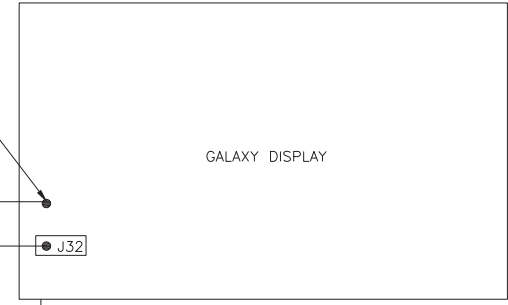
-REFER TO MANUAL DD-1387596 FOR MORE DETAILED INSTRUCTIONS.  
 -COM PORT NUMBERS MAY CHANGE DEPENDING ON COMPUTER SETUP

POOL 'A'



TB1 (OMNISPORT/RTD) PIN ID TABLE		
PIN	FUNCTION	
2	RTD CL TX=P(+)	- RED
6	RTD CL TX=N(-)	- BLK

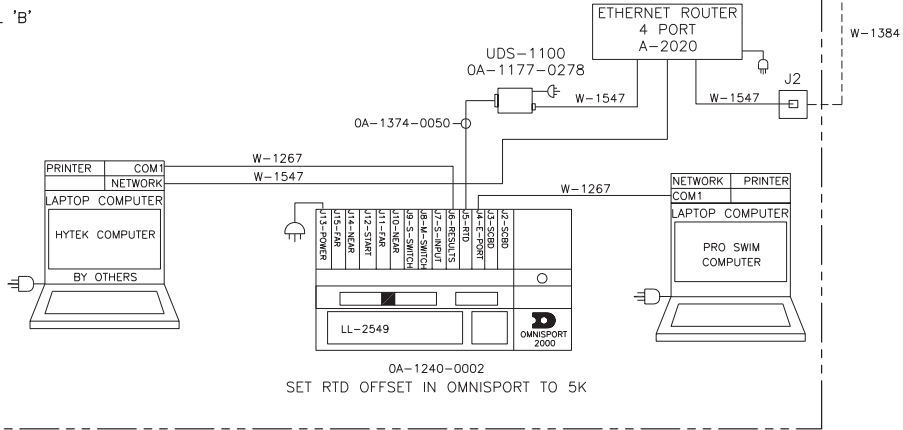
8-PIN RJ45 RJ45 J-BOX J2		
PIN#	WIRE COLOR	
1	WHT/ORG	
2	ORG	
3	WHT/GRN	
4	BLU	
5	WHT/BLU	
6	GRN	
7	WHT/BRN	
8	BRN	



NOTE:  
SEE INSTALLATION MANUAL FOR POWER REQUIREMENTS.

NOTE:  
W-1384, CAT5E CABLE RUNS MUST BE LESS THAN 250'.  
- FOR RUNS GREATER THAN 250' USE FIBER OPTIC CABLE OPTION.

POOL 'B'



POOL 'A'

HY-TEK SETTINGS  
 TIMING CONSOLE INTERFACE: OMNISPORT 2000  
 ALPHA SCOREBOARD INTERFACE: DAKTRONICS  
 SERIAL COM PORT FOR DAK 2 TIMER: 1

OMNISPORT SETTINGS  
 RESULT PORT: OMNI 2000  
 RTD MATRIX:  
 NUMBER OF LINES: (SET TO THE NUMBER OF LINES THAT WILL DISPLAY ON THE SCOREBOARD)  
 RTD OFFSET: 0K

POOL 'B'

HY-TEK SETTINGS  
 TIMING CONSOLE INTERFACE: OMNISPORT 2000  
 ALPHA SCOREBOARD INTERFACE: DAKTRONICS  
 SERIAL COM PORT FOR DAK 2 TIMER: 1

OMNISPORT SETTINGS  
 RESULT PORT: OMNI 2000  
 RTD MATRIX:  
 NUMBER OF LINES: (SET TO THE NUMBER OF LINES THAT WILL DISPLAY ON THE SCOREBOARD)  
 RTD OFFSET: 5K

DISPLAY (GALAXY/GALAXY PRO)

- PORT 1: TYPE: DIRECT  
 PROTOCOL: VENUS 1500  
 BAUD: 19200 - GALAXY  
 115200 - GALAXY PRO  
 NUMBER: 1
- PORT 2: TYPE: TCP/IP  
 PROTOCOL: VENUS 1500  
 PORT: 3001  
 NUMBER: 1
- PORT 3: TYPE: UDP/IP  
 PROTOCOL: DAKTRONICS RTD  
 PORT: 3002  
 NUMBER: 1
- PORT 4: TYPE: DIRECT  
 PROTOCOL: DAKTRONICS RTD  
 BAUD: 19200  
 NUMBER: 2

02	01 OCT 07	CORRECTED J-BOX PART NUMBER MISTYPE.	AMG
01	30 MAR 06	REVISED J-BOXES AND CONNECTIONS PER DESIGN CHANGE	ATP

REV.	DATE	DESCRIPTION	BY	APPR.
07	21 AUG 09	CORRECT OMNI 2K CONNECTION. UPDATED ROUTER PART NUMBER	CME	
06	23 JAN 09	UPDATED LAYOUT, ADDED ETHERNET ROUTER AND J-BOXES.	AMG	
05	11 NOV 08	CHANGED LAYOUT OF DRAWING	AMG	
04	07 AUG 08	ADDED SECOND OMNISPORT LOCATION	AMG	
03	03 APR 08	CHANGED J-BOX 1 TO 1 1/4" FROM DB9.	AMG	

THE CONCEPTS EXPRESSED AND DETAILS SHOWN ON THIS DRAWING ARE CONFIDENTIAL AND PROPRIETARY. DO NOT REPRODUCE BY ANY MEANS, INCLUDING ELECTRONICALLY WITHOUT THE EXPRESSED WRITTEN CONSENT OF DAKTRONICS, INC. COPYRIGHT 2006 DAKTRONICS, INC.

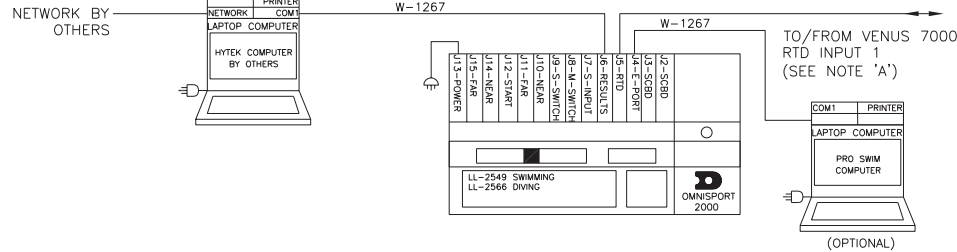
DAKTRONICS, INC. BROOKINGS, SD 57006

PROJ: SPORTSTAR  
 TITLE: GALAXY VIA WIRED ETHERNET  
 DES. BY: AHOWARD DRAWN BY: AHOWARD DATE: 19 JAN 06

REVISION	APPR. BY:	SCALE:	1177-R01B-262403
07		NONE	

-REFER TO MANUAL DD-1387596 FOR MORE DETAILED INSTRUCTIONS.  
 -COM PORT NUMBERS MAY CHANGE DEPENDING ON COMPUTER SETUP

① POOL A



NOTE 'A'  
 COMMUNICATION BETWEEN THE OMNISPORT 2000 AND THE VENUS 7000 IS RECOMMENDED TO BE CURRENT LOOP. FOR DISTANCES OVER 50FT, IT IS MANDATORY.

① POOL 'A'

**HY-TEK SETTINGS**  
 TIMING CONSOLE INTERFACE: OMNISPORT 2000  
 ALPHA SCOREBOARD INTERFACE: DAKTRONICS  
 SERIAL COM PORT FOR DAK 2 TIMER: 1

**VENUS 7000 SETTINGS**  
 INPUT: 1  
 NAME: POOL 'A'  
 SOURCE TYPE: COM PORT  
 SOURCE COM 5  
 BAUD: 19200  
 PARITY: NONE  
 DATA BITS: 8  
 PROTOCOL: ENHANCED  
 DEFAULT INPUT TEMPLATE : OS2\_SWIMMING

**SWIMDIVE REQUEST**  
 PORT NUMBER: 1  
 USE WITH: OMNISPORT 2000

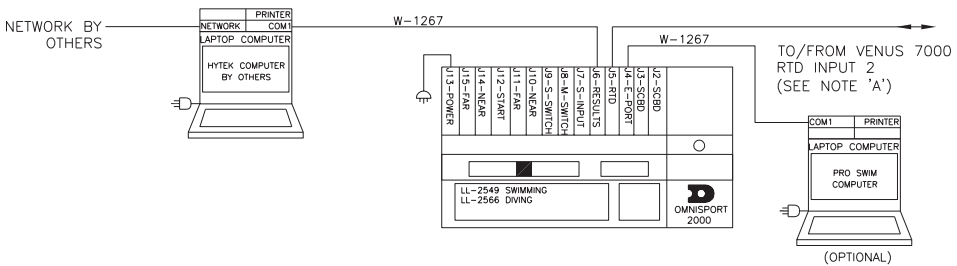
④ OPTION #1

**HY-TEK SETTINGS**  
 TIMING CONSOLE INTERFACE: OMNISPORT 2000  
 ALPHA SCOREBOARD INTERFACE: DAKTRONICS  
 SERIAL COM PORT FOR DAK2 TIMER: 1

**VENUS 7000 SETTINGS**  
 INPUT: 4  
 NAME: EXTENDED REQUESTS  
 SOURCE TYPE: COM PORT  
 SOURCE: COM 8  
 ENHANCED  
 DEFAULT INPUT TEMPLATE: OS2\_SWIMMING  
 BAUD: 9600  
 PARITY: EVEN  
 DATA BITS: 8  
 PROTOCOL: ENHANCED  
 SIZE: 5000

**SWIMDIVE REQUEST**  
 PORT NUMBER: 4  
 USE WITH: DIRECT HY-TEK

② POOL B



② POOL 'B'

**HY-TEK SETTINGS**  
 TIMING CONSOLE INTERFACE: OMNISPORT 2000  
 ALPHA SCOREBOARD INTERFACE: DAKTRONICS  
 SERIAL COM PORT FOR DAK 2 TIMER: 1

**VENUS 7000 SETTINGS**  
 INPUT: 2  
 NAME: POOL 'B'  
 SOURCE TYPE: COM PORT  
 SOURCE: COM 6  
 BAUD: 19200  
 PARITY: NONE  
 DATA BITS: 8  
 PROTOCOL: ENHANCED  
 DEFAULT INPUT TEMPLATE: OS2\_SWIMMING

**SWIMDIVE REQUEST**  
 PORT NUMBER: 2  
 USE WITH: OMNISPORT 2000

OPTION #2

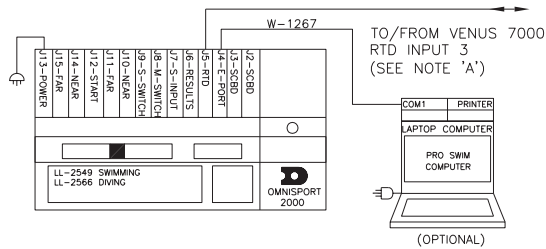
**HY-TEK SETTINGS**  
 TIMING CONSOLE INTERFACE: OMNISPORT 2000  
 ALPHA SCOREBOARD INTERFACE: GENERIC SERIAL  
 SERIAL COM PORT FOR DAK2 TIMER: 0  
 SERIAL COM PORT FOR GENERIC SCOREBOARD: 1

**SCOREBOARD PORT PARAMETERS:**  
 BAUD: 9600  
 PARITY: EVEN  
 DATA BITS: 7  
 STOP BITS: 1

**VENUS 7000 SETTINGS**  
 INPUT: 4  
 NAME: EXTENDED REQUESTS  
 SOURCE TYPE: COM PORT  
 SOURCE: COM 8  
 SIZE: 5000  
 BAUD: 9600  
 PARITY: EVEN  
 DATA BITS: 7  
 PROTOCOL: STANDARD  
 DEFAULT INPUT TEMPLATE: HYGNERICSTARTRESULTS  
 ADDITIONAL ITF'S THAT WILL BE USED:  
 HYGNERICTEAMSCORES, HYGNERICCOMPLETERESULTS

**SWIMDIVE REQUEST**  
 PORT NUMBER: 4  
 USE WITH: HYTEK GENERIC SCOREBOARD

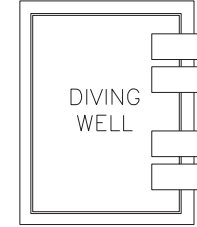
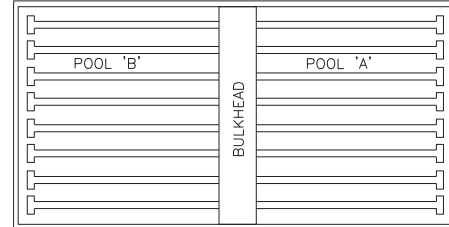
③ DIVING WELL



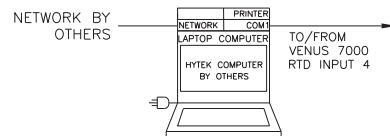
③ DIVE WELL

**VENUS 7000 SETTINGS**  
 INPUT: 3  
 NAME: DIVE WELL  
 SOURCE TYPE: COM PORT  
 SOURCE: COM 7  
 BAUD: 19200  
 PARITY: NONE  
 DATA BITS: 8  
 PROTOCOL: ENHANCED  
 DEFAULT INPUT TEMPLATE: OS2\_DIVE

TYPICAL POOL SETUP



④ ADDITIONAL HY-TEK FOR EXTENDED REQUESTS



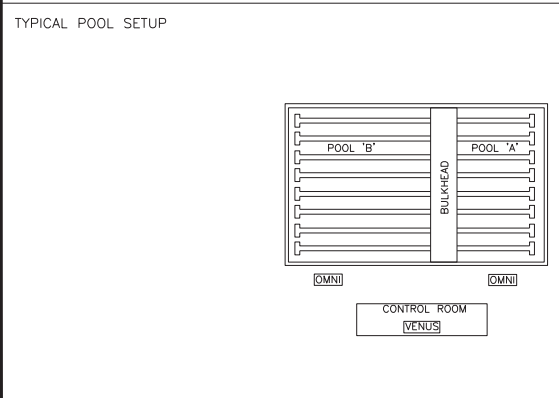
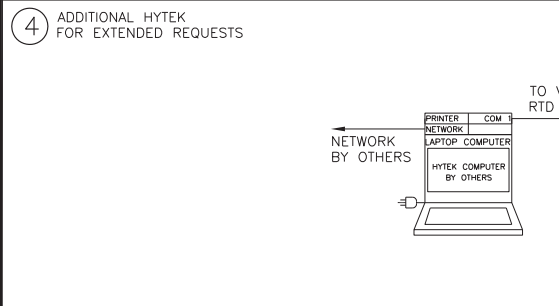
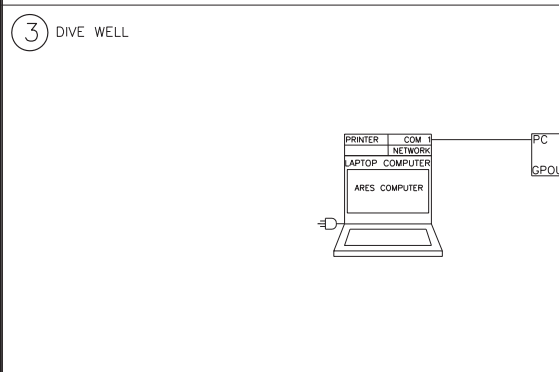
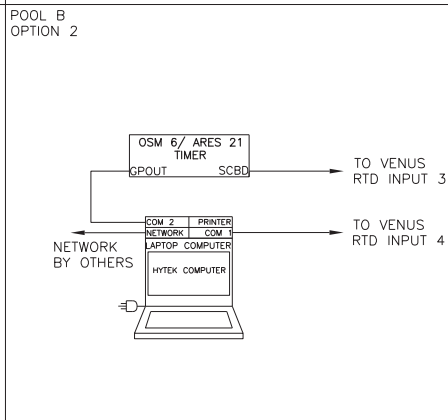
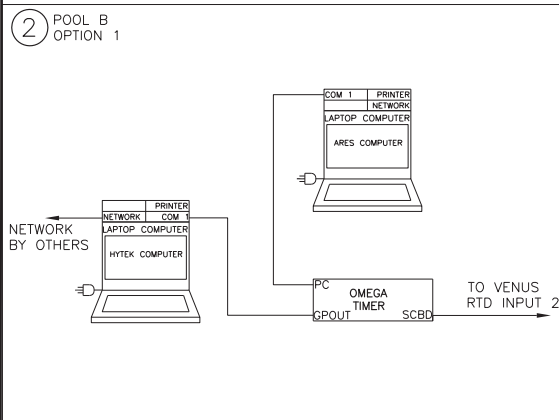
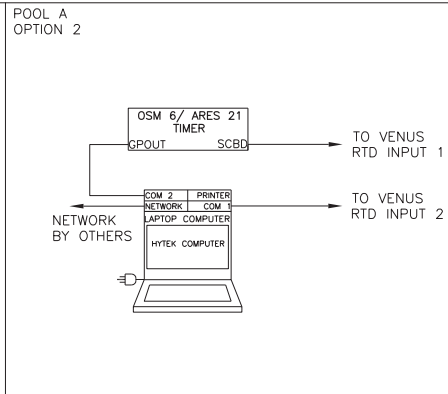
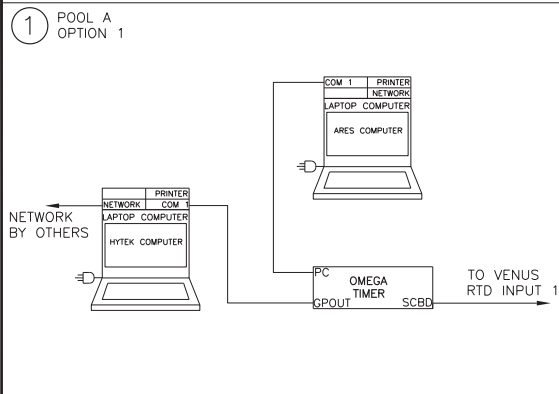
THE CONCEPTS EXPRESSED AND DETAILS SHOWN ON THIS DRAWING ARE CONFIDENTIAL AND PROPRIETARY. DO NOT REPRODUCE BY ANY MEANS, INCLUDING ELECTRONICALLY WITHOUT THE EXPRESSED WRITTEN CONSENT OF DAKTRONICS, INC. COPYRIGHT 2008 DAKTRONICS, INC.

DAKTRONICS, INC. BROOKINGS, SD 57006			
PROJ: AQUATICS			
TITLE: OMNI 2000 SYSTEM CONFIGURATIONS			
DES. BY: LMUELLE		DRAWN BY: LMUELLE	
DATE: 20 JUN 08			
REVISION	APPR. BY:	SCALE: NONE	
01		1056-R01B-531161	

REV.	DATE	DESCRIPTION	BY	APPR.
01	07 AUG 08	REVAMPED DRAWING	AMG	



REFER TO MANUAL DD- 1387596 FOR MORE DETAILED INSTRUCTIONS.



① POOL 'A' OPTION 1 (ARES BI-DIRECTIONAL)  
**HY-TEK SETTINGS**  
 TIMING CONSOLE INTERFACE: ARES 21 BI-DIRECTIONAL  
 ALPHA SCOREBOARD INTERFACE: DAKTRONICS  
**VENUS 7000 SETTINGS**  
 INPUT: 1  
 NAME: POOL 'A'  
 SOURCE TYPE: COM PORT  
 SOURCE COM 5  
 BAUD: 9600  
 PARITY: EVEN  
 DATA BITS: 8  
 PROTOCOL: ENHANCED  
 SIZE: 5000  
 DEFAULT INPUT TEMPLATE : OS6000 SWIM

② POOL 'B' OPTION 1  
**HY-TEK SETTINGS**  
 TIMING CONSOLE INTERFACE:  
 ARES 21 BI-DIRECTIONAL  
 ALPHA SCOREBOARD INTERFACE: DAKTRONICS  
**VENUS 7000 SETTINGS**  
 INPUT: 2  
 NAME: POOL 'A'  
 SOURCE TYPE: COM PORT  
 SOURCE COM 5  
 BAUD: 9600  
 PARITY: EVEN  
 DATA BITS: 8  
 PROTOCOL: ENHANCED  
 SIZE: 5000  
 DEFAULT INPUT TEMPLATE : OS6000 SWIM

③ DIVE WELL:  
**VENUS 7000 SETTINGS**  
 INPUT: 5  
 NAME: DIVE WELL  
 SOURCE TYPE: COM PORT  
 SOURCE: COM 9  
 BAUD RATE: 9600  
 PARITY: EVEN  
 DATA BITS: 8  
 PROTOCOL: ENHANCED  
 SIZE: 5000  
 DEFAULT INPUT TEMPLATE: OS6000DIVE

④ EXTENDED REQUESTS  
**OPTION #1**  
**HY-TEK SETTINGS**  
 TIMING CONSOLE INTERFACE: OMNISPORT 2000  
 ALPHA SCOREBOARD INTERFACE: DAKTRONICS  
 SERIAL COM PORT FOR DAK2 TIMER: 1  
**VENUS 7000 SETTINGS**  
 INPUT: 6  
 NAME: EXTENDED REQUESTS  
 SOURCE TYPE: COM PORT  
 SOURCE COM 10  
 DEFAULT INPUT TEMPLATE: OS2\_SWIMMING  
 BAUD: 9600  
 PARITY: EVEN  
 DATA BITS: 8  
 PROTOCOL: ENHANCED  
 SIZE: 5000  
**SWIMDIVE REQUEST**  
 PORT NUMBER: 6  
 USE WITH: DIRECT HY-TEK

**OPTION #2**  
**HY-TEK SETTINGS**  
 TIMING CONSOLE INTERFACE: OMEGA OSM6/ARES21  
 ALPHA SCOREBOARD INTERFACE: GENERIC SERIAL  
 SERIAL COM PORT FOR OSM6 TIMER: 0  
 SERIAL COM PORT FOR GENERIC SCOREBOARD: 1  
**SCOREBOARD PORT PARAMETERS:**  
 BAUD: 9600  
 PARITY: EVEN  
 DATA BITS: 7  
 STOP BITS: 1  
**VENUS 7000 SETTINGS**  
 INPUT: 6  
 NAME: EXTENDED REQUESTS  
 SOURCE TYPE: COM PORT  
 SOURCE: COM 8  
 SIZE: 5000  
 DEFAULT INPUT TEMPLATE: HYGENERICSTARTRESULTS  
 ADDITIONAL ITF'S THAT WILL BE USED:  
 HYGENERICTEAMSCORES, HYGENERICCOMPLETERESULTS

**SWIMDIVE REQUEST**  
 PORT NUMBER: 4  
 USE WITH: HYTEK GENERIC SCOREBOARD

OR

POOL 'A' OPTION 2 (OSM 6 / ARES 21)  
**HY-TEK SETTINGS**  
 TIMING CONSOLE INTERFACE: OMEGA OSM 6 / ARES 21  
 ALPHA SCOREBOARD INTERFACE: GENERIC SERIAL  
 SERIAL COM PORT FOR OSM 6: 1  
 SERIAL COM PORT FOR GENERIC SCOREBOARD: 2  
**SCOREBOARD PORT PARAMETERS**  
 BAUD RATE: 9600  
 PARITY: EVEN  
 DATA BITS: 7  
 STOP BITS: 1  
**VENUS 7000 SETTINGS**  
 INPUT: 1  
 NAME: POOL A TIMER  
 SOURCE TYPE: API/OTHER  
 SOURCE: (BLANK)  
 PROTOCOL: ENHANCED  
 SIZE: 5000  
 DEFAULT ITEM TEMPLATE:  
 INPUT: 2  
 NAME: POOL A RESULTS  
 SOURCE TYPE: COM PORT  
 SOURCE: COM 6  
 BAUD RATE: 9600  
 PARITY: EVEN  
 DATA BITS: 7  
 PROTOCOL: STANDARD  
 SIZE: 5000  
 DEFAULT ITEM TEMPLATE: HYGENERICSTARTRESULTS  
 ADDITIONAL ITF'S THAT WILL BE USED:  
 HYGENERICTEAMSCORES, HYGENERICCOMPLETERESULTS  
**TIMER INTERFACE 2000**  
 INPUT #1  
 NAME: OMEGA #1  
 PORT TYPE: COM PORT  
 PORT: COM 5  
 BAUD: 9600  
 PARITY: EVEN  
 DATA BITS: 7  
 STOP BITS: 2  
**OUTPUT #1**  
 SELECT INPUT: 1: OMEGA #1 - COM 1, 9600, EVEN, 8  
 SELECT OUTPUT TYPE: VENUS 7000 DIRECT  
 PORT: DIRECT TO VENUS PORT 1  
**SWIMDIVE REQUEST**  
 PORT NUMBER: 2  
 USE WITH: HYTEK GENERIC SCOREBOARD

OR

POOL 'B' OPTION 2  
**HY-TEK SETTINGS**  
 TIMING CONSOLE INTERFACE:  
 OMEGA OSM 6 / ARES 21  
 ALPHA SCOREBOARD INTERFACE: GENERIC SERIAL  
 SERIAL COM PORT FOR CTS\_TIMER: 1  
 SERIAL COM PORT FOR GENERIC SCOREBOARD: 2  
**SCOREBOARD PORT PARAMETERS**  
 BAUD RATE: 9600  
 PARITY: EVEN  
 DATA BITS: 7  
 STOP BITS: 1  
**VENUS 7000 SETTINGS**  
 INPUT: 3  
 NAME: POOL A TIMER  
 SOURCE TYPE: API/OTHER  
 SOURCE: (BLANK)  
 PROTOCOL: ENHANCED  
 SIZE: 5000  
 DEFAULT ITEM TEMPLATE:  
 INPUT: 4  
 NAME: POOL A RESULTS  
 SOURCE TYPE: COM PORT  
 SOURCE: COM 6  
 BAUD RATE: 9600  
 PARITY: EVEN  
 DATA BITS: 7  
 PROTOCOL: STANDARD  
 SIZE: 5000  
 DEFAULT ITEM TEMPLATE: HYGENERICSTARTRESULTS  
 ADDITIONAL ITF'S THAT WILL BE USED:  
 HYGENERICTEAMSCORES, HYGENERICCOMPLETERESULTS  
**TIMER INTERFACE 2000**  
 INPUT #1  
 NAME: OMEGA #1  
 PORT TYPE: COM PORT  
 PORT: COM 5  
 BAUD: 9600  
 PARITY: EVEN  
 DATA BITS: 7  
 STOP BITS: 2  
**OUTPUT #1**  
 SELECT INPUT: 1: OMEGA #1 - COM 1, 9600, EVEN, 8  
 SELECT OUTPUT TYPE: VENUS 7000 DIRECT  
 PORT: DIRECT TO VENUS PORT 1  
**SWIMDIVE REQUEST**  
 PORT NUMBER: 2  
 USE WITH: HYTEK GENERIC SCOREBOARD

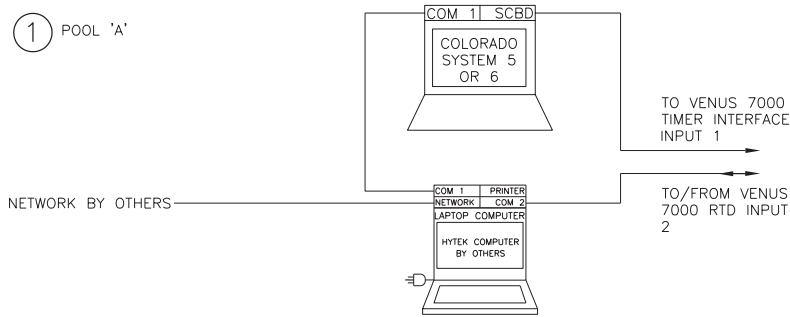
THE CONCEPTS EXPRESSED AND DETAILS SHOWN ON THIS DRAWING ARE CONFIDENTIAL AND PROPRIETARY. DO NOT REPRODUCE BY ANY MEANS, INCLUDING ELECTRONICALLY WITHOUT THE EXPRESSED WRITTEN CONSENT OF DAKTRONICS, INC. COPYRIGHT 2008 DAKTRONICS, INC.

03	29 APR 09	UPDATED NOTES	CME	
02	23 JAN 09	UPDATED LAYOUT	AMG	
01	11 NOV 08	UPDATED NOTES, CHANGED TO 'C' SIZE	AMG	
REV.	DATE	DESCRIPTION	BY	APPR.

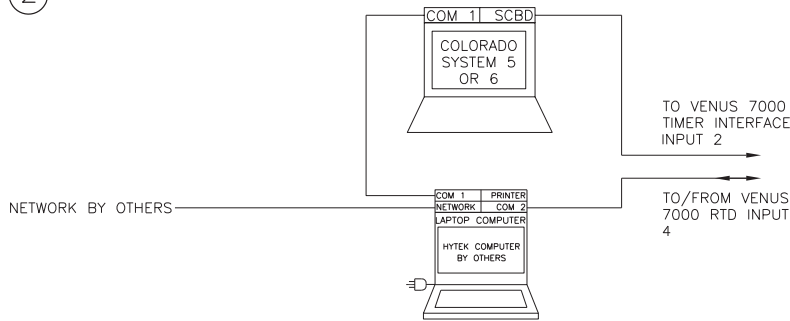
DAKTRONICS, INC. BROOKINGS, SD 57006	
PROJ: AQUATICS	
TITLE: OMEGA TIMING SYSTEM CONFIGURATIONS	
DES. BY: LMUELLE	DRAWN BY: LMUELLE
DATE: 23 JUN 08	
REVISION	APPR. BY:
03	SCALE: NONE
1056-R01C-536240	

-REFER TO MANUAL DD-1387596 FOR MORE DETAILED INSTRUCTIONS.  
 -COM PORT NUMBERS MAY CHANGE DEPENDING ON COMPUTER SETUP

① POOL 'A'



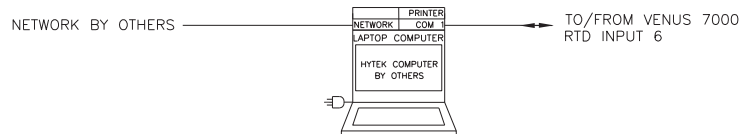
② POOL 'B'



③ DIVE WELL



④ ADDITIONAL HY-TEK FOR EXTENDED REQUESTS



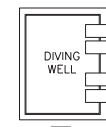
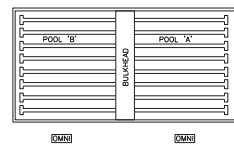
① POOL A  
 HY-TEK SETTINGS  
 TIMING CONSOLE INTERFACE: COLORADO  
 TIMING SYSTEM (4,5,OR 6)  
 ALPHA SCOREBOARD INTERFACE: GENERIC SERIAL  
 SERIAL COM PORT FOR CTS\_TIMER: 1  
 SERIAL COM PORT FOR GENSER SCOREBOARD: 2  
 SCOREBOARD PORT PARAMETERS  
 BAUD RATE: 9600  
 PARITY: EVEN  
 DATA BITS: 7  
 STOP BITS: 1  
 VENUS 7000 SETTINGS  
 INPUT: 1  
 NAME: POOL A TIMER  
 SOURCE TYPE: API/OTHER  
 SOURCE: (BLANK)  
 PROTOCOL: ENHANCED  
 SIZE: 5000  
 DEFAULT INPUT TEMPLATE: CTS INTERFACE SWIMMING  
 INPUT: 2  
 NAME: POOL A RESULTS  
 SOURCE TYPE: COM PORT  
 SOURCE: COM 6  
 BAUD RATE: 9600  
 PARITY: EVEN  
 DATA BITS: 7  
 PROTOCOL: STANDARD  
 SIZE: 5000  
 DEFAULT ITEM TEMPLATE: HYGENERIC START RESULTS  
 ADDITIONAL ITF'S THAT WILL BE USED:  
 HYGENERIC TEAM SCORES  
 HYGENERIC COMPLETE RESULTS  
 TIMER INTERFACE 2000  
 INPUT #1  
 NAME: CTS #1  
 PORT TYPE: COM PORT  
 PORT: COM 5  
 BAUD: 9600  
 PARITY: EVEN  
 DATA BITS: 8  
 STOP BITS: 2  
 OUTPUT #1  
 SELECT INPUT: 1: CTS #1 - COM 5, 9600, 8, EVEN  
 SELECT OUTPUT TYPE: VENUS 7000 DIRECT  
 PORT: DIRECT TO VENUS PORT 1  
 SWIMDIVE REQUEST  
 PORT NUMBER: 2  
 USE WITH: HYTEK GENERIC SCOREBOARD

② POOL B:  
 USE SAME SETTINGS AS POOL A EXCEPT:  
 VENUS 7000 SETTINGS  
 INPUT: 3  
 NAME: POOL B TIMER  
 INPUT: 4  
 NAME: POOL B RESULTS  
 SOURCE: COM 8  
 TIMER INTERFACE 2000  
 INPUT #2  
 NAME: CTS #2  
 PORT: COM 7  
 BAUD: 9600  
 PARITY: EVEN  
 DATA BITS: 8  
 STOP BITS: 2  
 OUTPUT #2  
 SELECT INPUT: 2  
 NAME: CTS #2 - COM 7, 9600, 8, EVEN  
 PORT: DIRECT TO VENUS PORT 3  
 SWIMDIVE REQUEST  
 PORT NUMBER: 4

③ DIVE WELL:  
 VENUS 7000 SETTINGS  
 INPUT: 5  
 NAME: DIVE WELL  
 SOURCE TYPE: API/OTHER  
 SOURCE: (BLANK)  
 PROTOCOL: ENHANCED  
 SIZE: 5000  
 DEFAULT INPUT TEMPLATE: CTS INTERFACE DIVE  
 TIMER INTERFACE 2000  
 INPUT: #3  
 NAME: CTS #3  
 PORT: COM 9  
 BAUD RATE: 9600  
 PARITY: EVEN  
 DATA BITS: 8  
 STOP BITS: 2  
 OUTPUT #3  
 SELECT INPUT: 3 - COM 9, 9600, 8, EVEN  
 NAME: CTS #3  
 PORT: DIRECT TO VENUS PORT 5

④ OPTION #1  
 HY-TEK SETTINGS  
 TIMING CONSOLE INTERFACE: OMNISPORT 2000  
 ALPHA SCOREBOARD INTERFACE: DAKTRONICS  
 SERIAL COM PORT FOR DAK2 TIMER: 1  
 VENUS 7000 SETTINGS  
 INPUT: 6  
 NAME: EXTENDED REQUESTS  
 SOURCE TYPE: COM PORT  
 SOURCE: COM 10  
 BAUD: 9600  
 PARITY: EVEN  
 DATA BITS: 8  
 PROTOCOL: ENHANCED  
 SIZE: 5000  
 DEFAULT INPUT TEMPLATE: OS2\_SWIMMING  
 SWIMDIVE REQUEST  
 PORT NUMBER: 6  
 USE WITH: DIRECT HY-TEK  
 OR  
 OPTION #2  
 HY-TEK SETTINGS  
 TIMING CONSOLE INTERFACE: COLORADO  
 TIMING SYSTEM (4,5, OR 6)  
 ALPHA SCOREBOARD INTERFACE: GENERIC SERIAL  
 SERIAL COM PORT FOR CTS TIMER: 0  
 SERIAL COM PORT FOR GENERIC SCOREBOARD: 1  
 SCOREBOARD PORT PARAMETERS:  
 BAUD: 9600  
 PARITY: EVEN  
 DATA BITS: 7  
 STOP BITS: 1  
 VENUS 7000 SETTINGS  
 INPUT: 6  
 NAME: EXTENDED REQUESTS  
 SOURCE TYPE: COM PORT  
 SOURCE: COM 10  
 SIZE: 5000  
 BAUD: 9600  
 PARITY: EVEN  
 DATA BITS: 7  
 PROTOCOL: STANDARD  
 DEFAULT INPUT TEMPLATE: HYGENERICSTARTRESULTS  
 ADDITIONAL ITF'S THAT WILL BE USED:  
 HYGENERICTEAMSCORES,  
 HYGENERICCOMPLETERESULTS  
 SWIMDIVE REQUEST  
 PORT NUMBER: 6  
 USE WITH: HYTEK GENERIC SCOREBOARD

TYPICAL POOL SETUP

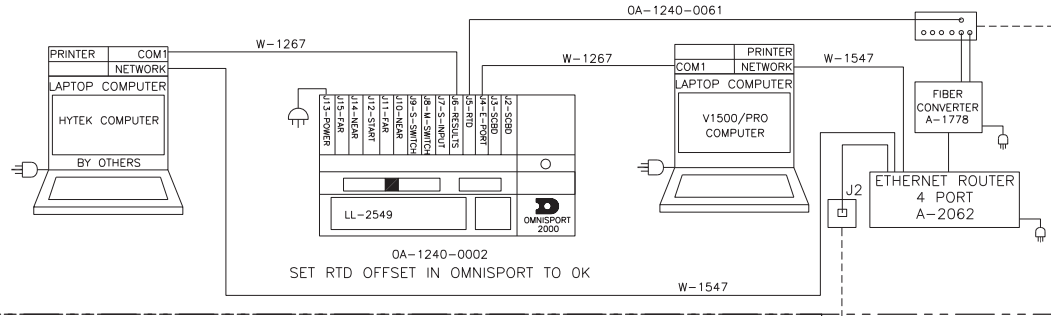


REV.	DATE	DESCRIPTION	BY	APPR.
02	23 JAN 09	UPDATED LAYOUT	AMG	

01	8 SEPT 08	REDDI LAYOUT OF DWG, UPDATED NOTES	AMG	
THE CONCEPTS EXPRESSED AND DETAILS SHOWN ON THIS DRAWING ARE CONFIDENTIAL AND PROPRIETARY. DO NOT REPRODUCE BY ANY MEANS, INCLUDING ELECTRONICALLY WITHOUT THE EXPRESSED WRITTEN CONSENT OF DAKTRONICS, INC. COPYRIGHT 2008 DAKTRONICS, INC.				
DAKTRONICS, INC. BROOKINGS, SD 57006				
PROJ: AQUATICS				
TITLE: COLORADO TIMING SYSTEM CONFIGURATIONS				
DES. BY: LMUELLE		DRAWN BY: LMUELLE		DATE: 23 JUN 08
REVISION	APPR. BY:	SCALE: NONE		
02		1056-R01B-539079		

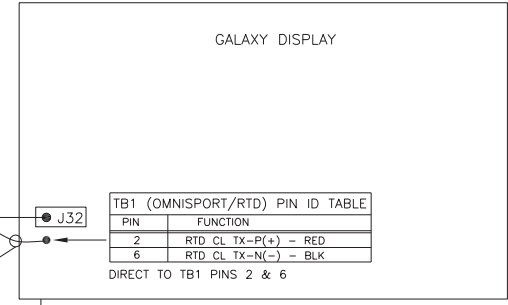
-REFER TO MANUAL DD-1387596 FOR MORE DETAILED INSTRUCTIONS.  
 -COM PORT NUMBERS MAY CHANGE DEPENDING ON COMPUTER SETUP

**POOL 'A'**



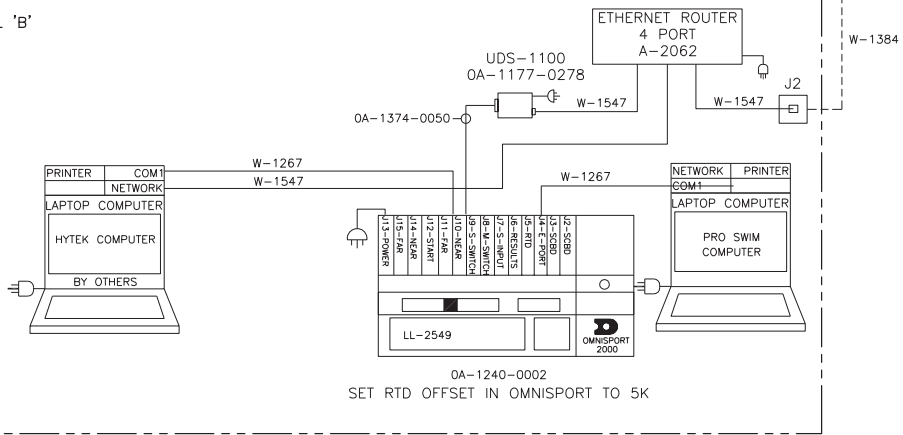
0A-1125-0009 &  
 0A-1196-0131  
 6 POSITION SPLICE  
 BOX W/ SINGLE CL  
 TO FIBER CONVERTER

AF-3400 AND GALAXY PRO  
 USE 0A-1125-0011  
 AF-3500 AND NEW MODEL  
 SPORTSTAR  
 USE 0A-1125-0013



NOTE:  
 SEE INSTALLATION MANUAL  
 FOR POWER REQUIREMENTS.

**POOL 'B'**



**POOL 'A'**  
 HY-TEK SETTINGS  
 TIMING CONSOLE INTERFACE: OMNISPORT 2000  
 ALPHA SCOREBOARD INTERFACE: DAKTRONICS  
 SERIAL COM PORT FOR DAK 2 TIMER: 1

**OMNISPORT SETTINGS**  
 RESULT PORT: OMNI 2000  
 RTD MATRIX:  
 NUMBER OF LINES: (SET TO THE NUMBER  
 OF LINES THAT WILL DISPLAY ON THE  
 SCOREBOARD)  
 RTD OFFSET: 0K

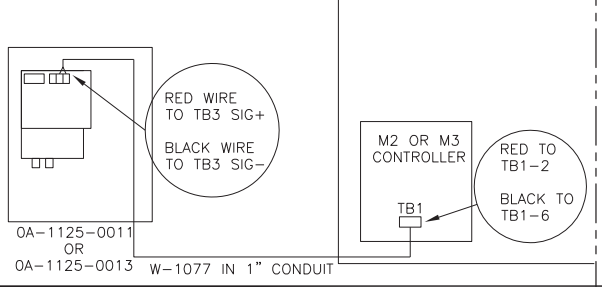
**POOL 'B'**  
 HY-TEK SETTINGS  
 TIMING CONSOLE INTERFACE: OMNISPORT 2000  
 ALPHA SCOREBOARD INTERFACE: DAKTRONICS  
 SERIAL COM PORT FOR DAK 2 TIMER: 1

**OMNISPORT SETTINGS**  
 RESULT PORT: OMNI 2000  
 RTD MATRIX:  
 NUMBER OF LINES: (SET TO THE NUMBER  
 OF LINES THAT WILL DISPLAY ON THE  
 SCOREBOARD)  
 RTD OFFSET: 5K

**DISPLAY (GALAXY/GALAXY PRO)**

- PORT 1: TYPE: DIRECT  
 PROTOCOL: VENUS 1500  
 BAUD: 19200 - GALAXY  
 115200 - GALAXY PRO  
 NUMBER: 1
- PORT 2: TYPE: TCP/IP  
 PROTOCOL: VENUS 1500  
 PORT: 3001  
 NUMBER: 1
- PORT 3: TYPE: UDP/IP  
 PROTOCOL: DAKTRONICS RTD  
 PORT: 3002  
 NUMBER: 1
- PORT 4: TYPE: DIRECT  
 PROTOCOL: DAKTRONICS RTD  
 BAUD: 19200  
 NUMBER: 2

**DETAIL 'A'**



0A-1177-1029  
 RJ45 J-BOX  
 J2

PIN#	WIRE COLOR
1	WHT/ORG
2	ORG
3	WHT/GRN
4	BLU
5	WHT/BLU
6	GRN
7	WHT/BRN
8	BRN

THE CONCEPTS EXPRESSED AND DETAILS SHOWN ON THIS DRAWING ARE CONFIDENTIAL AND PROPRIETARY. DO NOT REPRODUCE BY ANY MEANS, INCLUDING ELECTRONICALLY WITHOUT THE EXPRESSED WRITTEN CONSENT OF DAKTRONICS, INC. COPYRIGHT 2008 DAKTRONICS, INC.

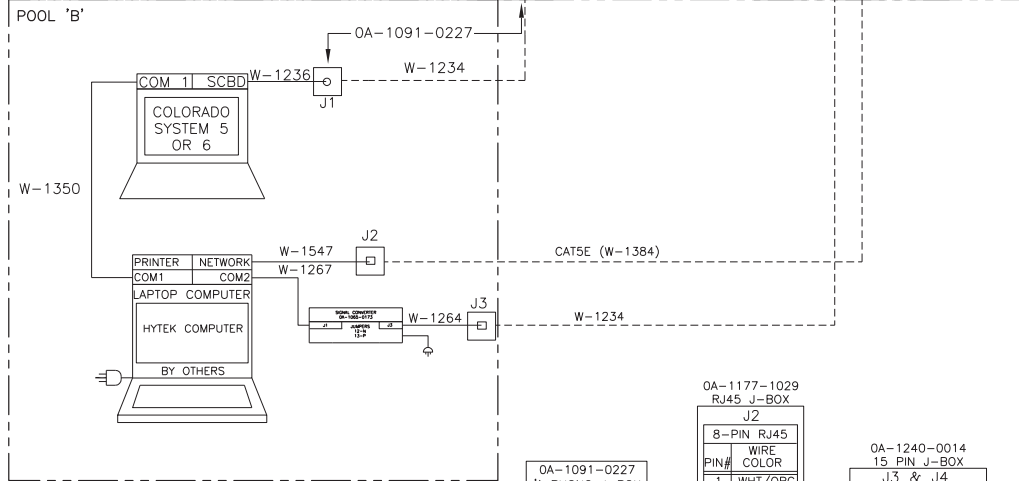
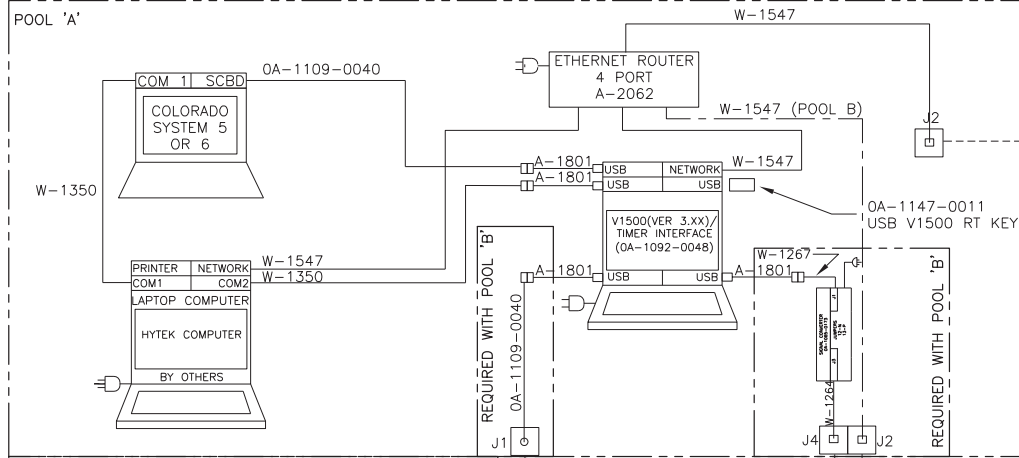
DAKTRONICS, INC. BROOKINGS, SD 57006

PROJ: OMNISPORT  
 TITLE: OMNISPORT TO GALAXY VIA FIBER W/HYTEK, V1500, PRO  
 DES. BY: JWARNE DRAWN BY: AGORDER DATE: 06 AUG 08

REV.	DATE	DESCRIPTION	BY	APPR.
01	23 JAN 09	UPDATED LAYOUT, ADDED ETHERNET ROUTER AND J-BOXES.	AMG	

REVISION APPR. BY: SCALE: NONE 1056-R01B-603918

-REFER TO MANUAL DD-1387596 FOR MORE DETAILED INSTRUCTIONS.  
 -COM PORT NUMBERS MAY CHANGE DEPENDING ON COMPUTER SETUP



0A-1091-0227  
1/4" PHONO J-BOX  
J1

PIN#	WIRE COLOR
TIP	RED
RING	NOT USED
SHANK	BLK

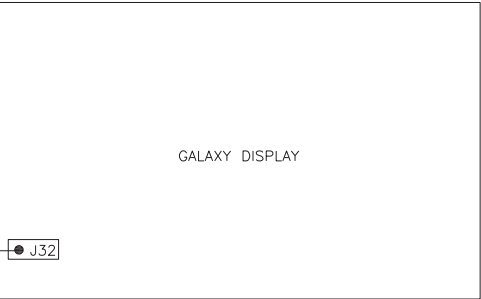
0A-1177-1029  
RJ45 J-BOX  
J2

8-PIN RJ45 PIN#	WIRE COLOR
1	WHT/ORG
2	ORG
3	WHT/GRN
4	BLU
5	WHT/BLU
6	GRN
7	WHT/BRN
8	BRN

0A-1240-0014  
15 PIN J-BOX  
J3 & J4

15 PIN J-BOX PIN#	WIRE COLOR	15 PIN D PIN#
9	RED	11
10	BLACK	12
11	WHITE	9
12	GREEN	10

NOTE:  
W-1384, CAT5E CABLE RUNS MUST BE LESS THAN 250'.  
- FOR RUNS GREATER THAN 250' USE FIBER OPTIC CABLE OPTION.



NOTE:  
SEE INSTALLATION MANUAL FOR POWER REQUIREMENTS.

**V1500 RT SETTINGS**

INPUT: 2  
PORT TYPE: SERIAL COM PORT  
PORT: COM 5  
BAUD RATE: 9600  
PARITY: EVEN  
DATA BITS: 7  
STOP BITS: 1

INPUT: 4  
PORT TYPE: SERIAL COM PORT  
PORT: COM 6  
BAUD RATE: 9600  
PARITY: EVEN  
DATA BITS: 7  
STOP BITS: 1

**POOL 'A'**

**HYTEK SETTINGS**  
TIMING CONSOLE INTERFACE: COLORADO  
TIMING SYSTEMS (4,5, OR 6)  
ALPHA SCOREBOARD INTERFACE:  
GENERIC SERIAL  
SERIAL COMPORT FOR CTS\_TIMER: 1  
SERIAL COMPORT FOR GENERIC SCOREBOARD: 2

**SCOREBOARD PORT PARAMETERS**

BAUD RATE: 9600  
PARITY: EVEN  
DATA BITS: 7  
STOP BITS: 1

**TIMER INTERFACE 2000**

INPUT #1  
NAME: CTS #1  
PORT TYPE: COM PORT  
PORT: COM 7  
BAUD: 9600  
PARITY: EVEN  
DATA BITS: 8  
STOP BITS: 2

OUTPUT #1  
SELECT INPUT: 1: CTS #1  
SELECT OUTPUT TYPE: ENHANCED RTD  
PORT TYPE: UDP  
PORT: 3002

**POOL 'B'**

**HYTEK SETTINGS**  
TIMING CONSOLE INTERFACE: COLORADO  
TIMING SYSTEMS (4,5, OR 6)  
ALPHA SCOREBOARD INTERFACE:  
GENERIC SERIAL  
SERIAL COMPORT FOR CTS\_TIMER: 1  
SERIAL COMPORT FOR GENERIC SCOREBOARD: 2

**SCOREBOARD PORT PARAMETERS**

BAUD RATE: 9600  
PARITY: EVEN  
DATA BITS: 7  
STOP BITS: 1

**TIMER INTERFACE 2000**

INPUT #2  
NAME: CTS #2  
PORT TYPE: COM PORT  
PORT: COM 8  
BAUD: 9600  
PARITY: EVEN  
DATA BITS: 8  
STOP BITS: 2

OUTPUT #2  
SELECT INPUT: 2: CTS #2  
SELECT OUTPUT TYPE: ENHANCED RTD  
PORT TYPE: UDP  
PORT: 3002  
OFFSET: 10000

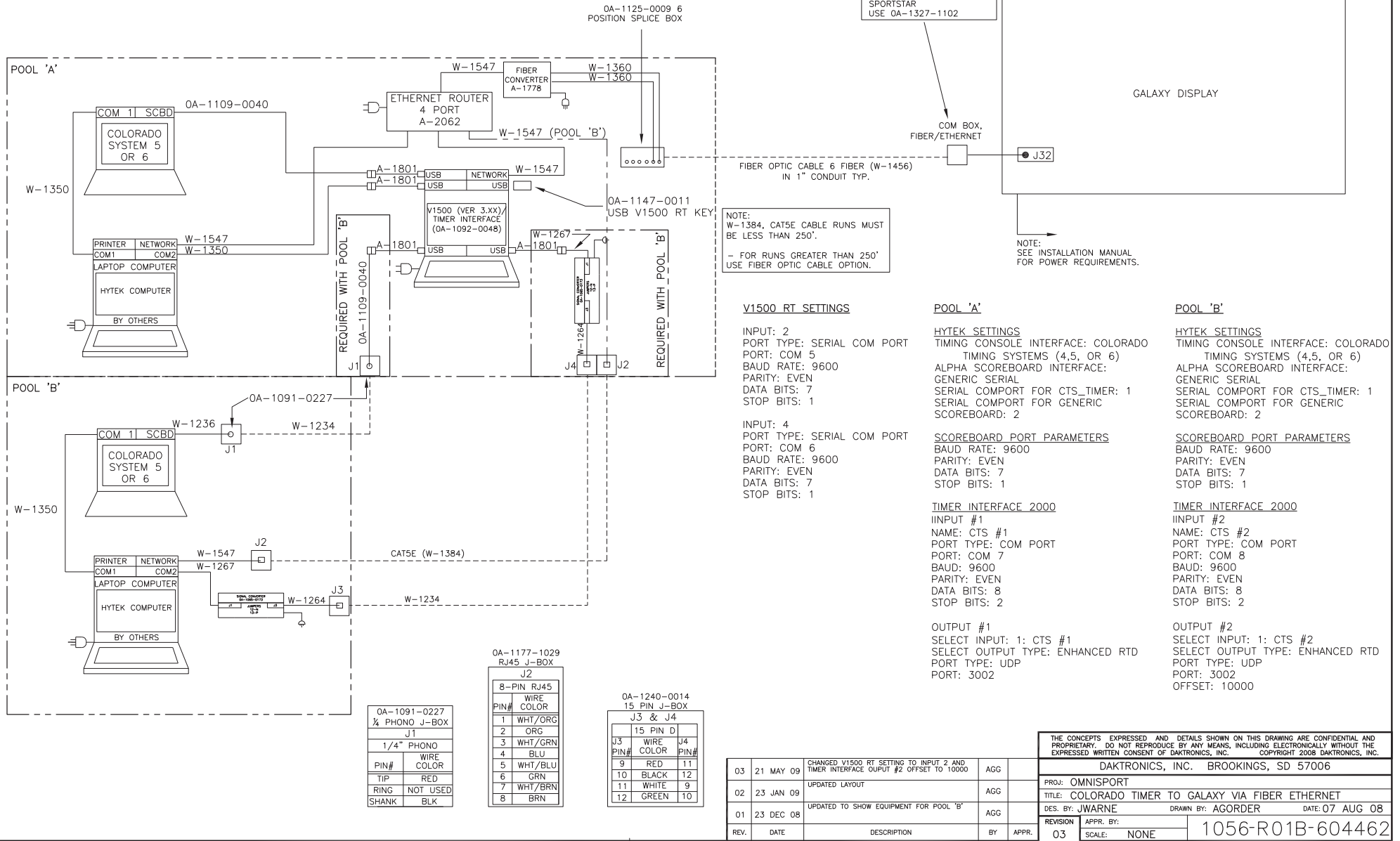
REV.	DATE	DESCRIPTION	BY	APPR.
04	8 FEB 10	CORRECTED TIMER INTERFACE PART #	AGG	
03	21 MAY 09	CHANGED V1500 RT SETTING TO INPUT 2 AND TIMER INTERFACE OUTPUT #2 OFFSET TO 10000	AGG	
02	23 JAN 09	UPDATED DESCRIPTIONS	AGG	
01	17 DEC 08	UPDATED TO SHOW EQUIPMENT FOR POOL 'B'	AGG	

THE CONCEPTS EXPRESSED AND DETAILS SHOWN ON THIS DRAWING ARE CONFIDENTIAL AND PROPRIETARY. DO NOT REPRODUCE BY ANY MEANS, INCLUDING ELECTRONICALLY WITHOUT THE EXPRESSED WRITTEN CONSENT OF DAKTRONICS, INC. COPYRIGHT 2008 DAKTRONICS, INC.	
DAKTRONICS, INC. BROOKINGS, SD 57006	
PROJ: OMNISPORT	
TITLE: COLORADO TIMER TO GALAXY VIA WIRED ETHERNET	
DES. BY: JWARNE	DRAWN BY: AGORDER DATE: 07 AUG 08
REVISION	APPR. BY:
04	SCALE: NONE

1056-R01B-604064

REFER TO MANUAL DD-1387596 FOR MORE DETAILED INSTRUCTIONS.  
COM PORT NUMBERS MAY CHANGE DEPENDING ON COMPUTER SETUP



AF-3400 AND GALAXY PRO  
USE OA-1229-0109  
AF-3500 AND NEW MODEL  
SPORTSTAR  
USE OA-1327-1102

NOTE:  
W-1384, CAT5E CABLE RUNS MUST  
BE LESS THAN 250'.  
- FOR RUNS GREATER THAN 250'  
USE FIBER OPTIC CABLE OPTION.

NOTE:  
SEE INSTALLATION MANUAL  
FOR POWER REQUIREMENTS.

**V1500 RT SETTINGS**

INPUT: 2  
PORT TYPE: SERIAL COM PORT  
PORT: COM 5  
BAUD RATE: 9600  
PARITY: EVEN  
DATA BITS: 7  
STOP BITS: 1

INPUT: 4  
PORT TYPE: SERIAL COM PORT  
PORT: COM 6  
BAUD RATE: 9600  
PARITY: EVEN  
DATA BITS: 7  
STOP BITS: 1

**POOL 'A'**

**HYTEK SETTINGS**  
TIMING CONSOLE INTERFACE: COLORADO  
TIMING SYSTEMS (4,5, OR 6)  
ALPHA SCOREBOARD INTERFACE:  
GENERIC SERIAL  
SERIAL COMPORT FOR CTS\_TIMER: 1  
SERIAL COMPORT FOR GENERIC  
SCOREBOARD: 2

**SCOREBOARD PORT PARAMETERS**

BAUD RATE: 9600  
PARITY: EVEN  
DATA BITS: 7  
STOP BITS: 1

**TIMER INTERFACE 2000**

IINPUT #1  
NAME: CTS #1  
PORT TYPE: COM PORT  
PORT: COM 7  
BAUD: 9600  
PARITY: EVEN  
DATA BITS: 8  
STOP BITS: 2

OUTPUT #1  
SELECT INPUT: 1: CTS #1  
SELECT OUTPUT TYPE: ENHANCED RTD  
PORT TYPE: UDP  
PORT: 3002

**POOL 'B'**

**HYTEK SETTINGS**  
TIMING CONSOLE INTERFACE: COLORADO  
TIMING SYSTEMS (4,5, OR 6)  
ALPHA SCOREBOARD INTERFACE:  
GENERIC SERIAL  
SERIAL COMPORT FOR CTS\_TIMER: 1  
SERIAL COMPORT FOR GENERIC  
SCOREBOARD: 2

**SCOREBOARD PORT PARAMETERS**

BAUD RATE: 9600  
PARITY: EVEN  
DATA BITS: 7  
STOP BITS: 1

**TIMER INTERFACE 2000**

INPUT #2  
NAME: CTS #2  
PORT TYPE: COM PORT  
PORT: COM 8  
BAUD: 9600  
PARITY: EVEN  
DATA BITS: 8  
STOP BITS: 2

OUTPUT #2  
SELECT INPUT: 1: CTS #2  
SELECT OUTPUT TYPE: ENHANCED RTD  
PORT TYPE: UDP  
PORT: 3002  
OFFSET: 10000

OA-1091-0227  
1/4" PHONO J-BOX  
J1

PIN#	WIRE COLOR
1	RED
2	GRN
3	BLU
4	WHT/BLU
5	WHT/GRN
6	GRN
7	WHT/BRN
8	BRN
TIP	RED
RING	NOT USED
SHANK	BLK

OA-1177-1029  
RJ45 J-BOX  
J2

PIN#	WIRE COLOR
1	WHT/ORG
2	ORG
3	WHT/GRN
4	BLU
5	WHT/BLU
6	GRN
7	WHT/BRN
8	BRN

OA-1240-0014  
15 PIN J-BOX  
J3 & J4

J3 PIN#	WIRE COLOR	J4 PIN#
9	RED	11
10	BLACK	12
11	WHITE	9
12	GREEN	10

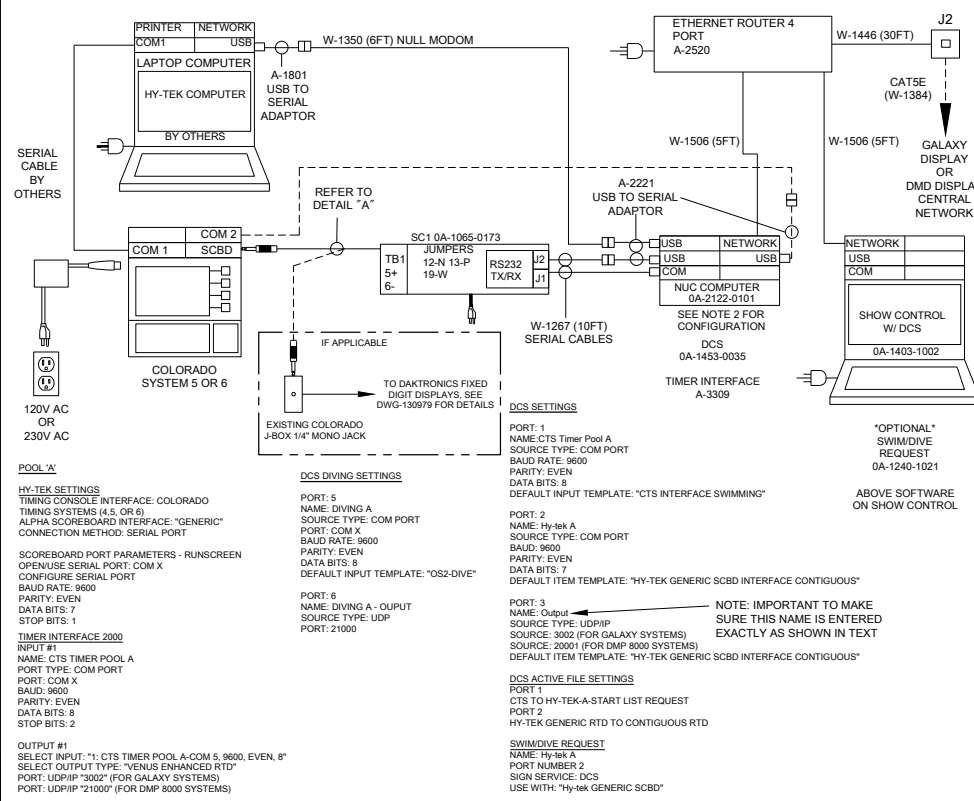
THE CONCEPTS EXPRESSED AND DETAILS SHOWN ON THIS DRAWING ARE CONFIDENTIAL AND PROPRIETARY. DO NOT REPRODUCE BY ANY MEANS, INCLUDING ELECTRONICALLY WITHOUT THE EXPRESSED WRITTEN CONSENT OF DAKTRONICS, INC. COPYRIGHT 2008 DAKTRONICS, INC.

REV.	DATE	DESCRIPTION	BY	APPR.
03	21 MAY 09	CHANGED V1500 RT SETTING TO INPUT 2 AND TIMER INTERFACE OUTPUT #2 OFFSET TO 10000	AGG	
02	23 JAN 09	UPDATED LAYOUT	AGG	
01	23 DEC 08	UPDATED TO SHOW EQUIPMENT FOR POOL 'B'	AGG	

DAKTRONICS, INC. BROOKINGS, SD 57006	
PROJ: OMNISPORT	
TITLE: COLORADO TIMER TO GALAXY VIA FIBER ETHERNET	
DES. BY: JWARNE	DRAWN BY: AGORDER
DATE: 07 AUG 08	
REVISION	APPR. BY:
03	SCALE: NONE
1056-R01B-604462	

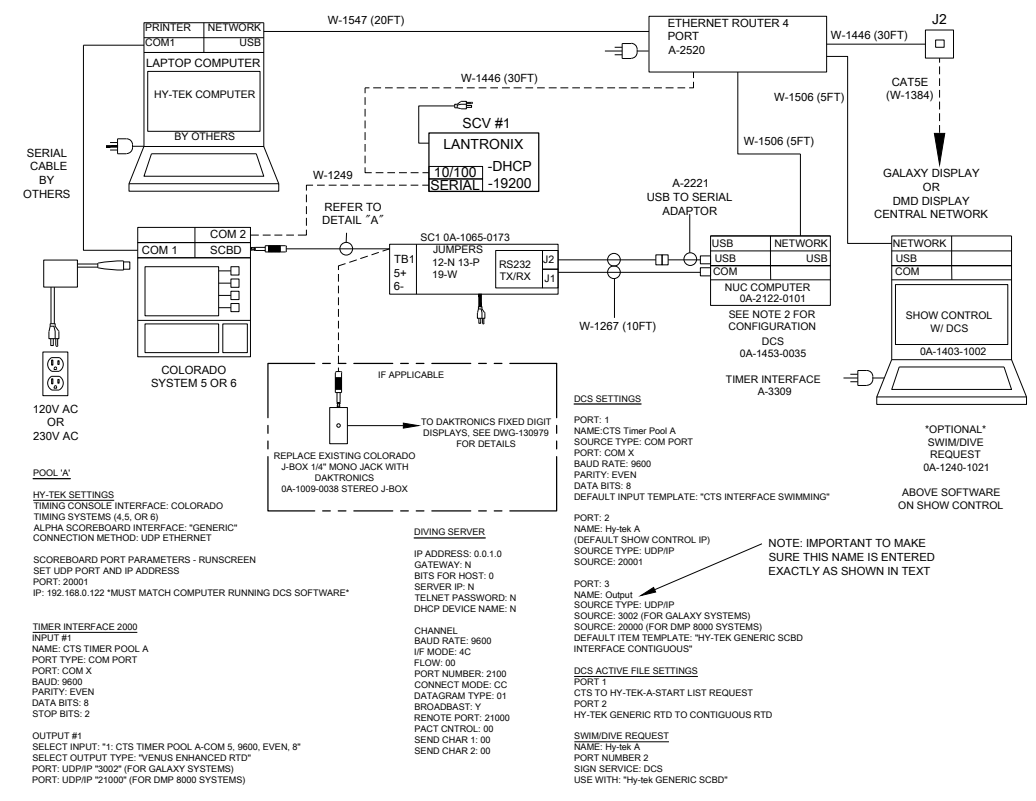
# SERIAL CONNECTION METHOD

ALL EQUIPMENT IS SHOWN WITHIN 10 FT OF EACH OTHER



# NETWORK CONNECTION METHOD - USE HY-TEK VERSION 5.0DB OR HIGHER

ALL EQUIPMENT IS SHOWN WITHIN 10 FT OF EACH OTHER



## NOTES SECTION

-COM PORT NUMBERS MAY CHANGE DEPENDING ON COMPUTER SETUP

-THE ABOVE CONFIGURATION WILL AUTOMATICALLY SEND THE "START LIST" (SWIMMER NAMES) FROM HY-TEK TO THE DISPLAY. THE KEY STROKE THAT TRIGGER THIS, IS THE "NEXT EVENT" OR "NEXT HEAT" BUTTON ON THE CTS TIMER.

-TIMER INTERFACE AND DCS MUST BE OPENED BEFORE CTS SCBD SIGNAL CABLE IS PLUGGED IN. IF THE STARTUP IS NOT FOLLOWED, WINDOWS WILL DETECT THE SERIAL DEVICES AS A SERIAL MOUSE.

-OPTIONAL SWIM/DIVE REQUEST SOFTWARE CAN BE USED FOR ALL REQUESTS. FOR EXAMPLE, START LIST, EVENT RESULTS, TEAM SCORES.

-THIS CAN ALSO BE PUSHED FROM THE HY-TEK COMPUTER, USING THE "CNTRL+F" KEYS.

-THE FUNCTION KEY "LIST" IS FOUND IN HY-TEK, WHEN IN THE "RUN" SCREEN, UNDER "HELP/ SHORTCUTS".

-USE HY-TEK VERSION 5.0 DB OR HIGHER FOR NETWORK CONNECTION METHOD.

NOTE 2:

3 STEP PROCESS TO CONFIGURE A-4829592 FOUND IN 0A-2122-0101

1) NAVIGATE TO TIMERINTERFACE EXE APPLICATION IN APPROPRIATE FOLDER AND RIGHT-CLICK, THEN SELECT CREATE SHORTCUT

2) MOVE OR COPY/PASTE SHORTCUT FILE INTO FOLLOWING FOLDER NAME: C:\USER\USER\NAME\APPDATA\ROAMING\MICROSOFT\WINDOWS\START MENU\PROGRAMS\STARTUP

3) REBOOT COMPUTER TO CONFIRM START OF TIMERINTERFACE

### DIVING NOTES:

\*SET CTS CONSOLE COM 2 TO DAK ERTD

\*USE DAKTRONICS AQUATICS DIVE A PROFILE WHEN MAKING THE RTD SEQUENCE

### CABLE/J-45 J-BOX CONNECTION DETAIL

DETAIL "A":	
CTS 1/4" MONO OR DAK 1/4" STEREO	SIGNAL CONVERTER TB1
TIP	PIN6 CL(-)
SHANK	PIN5 CL(+)

J2	
8-PIN RJ45	
WIRE COLOR	
1	WHT/ORG
2	ORG
3	WHT/GRN
4	BLU
5	WHT/BLU
6	GRN
7	WHT/BRN
8	BRN

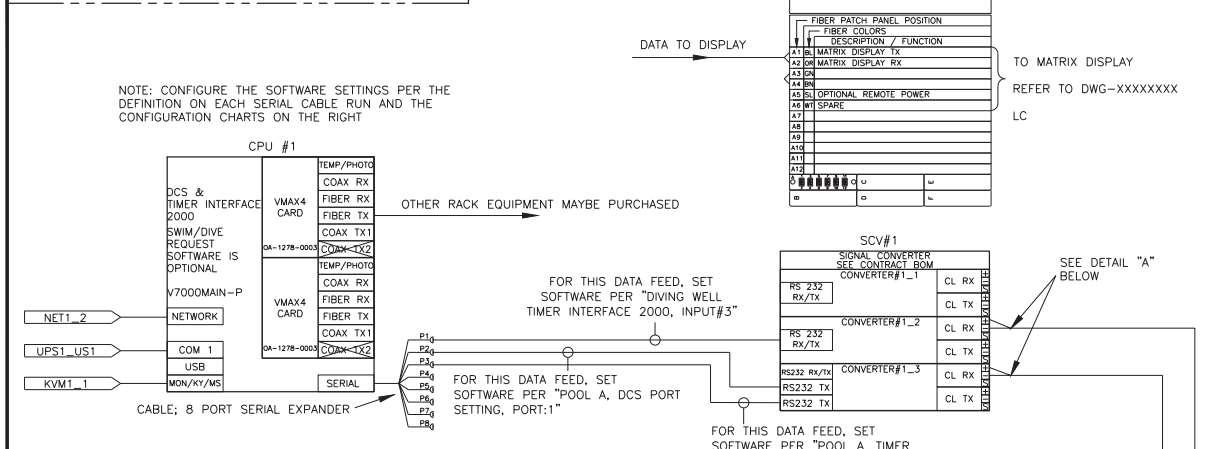
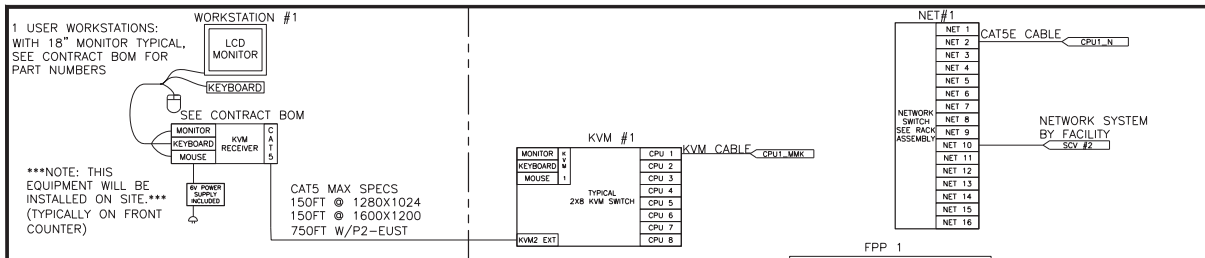
0A-1177-1029 RJ45 J-BOX

NOTE: W-1384, CAT5E CABLE RUNS MUST BE LESS THAN 250'.  
 - FOR RUNS GREATER THAN 250' USE FIBER OPTIC CABLE OPTION.

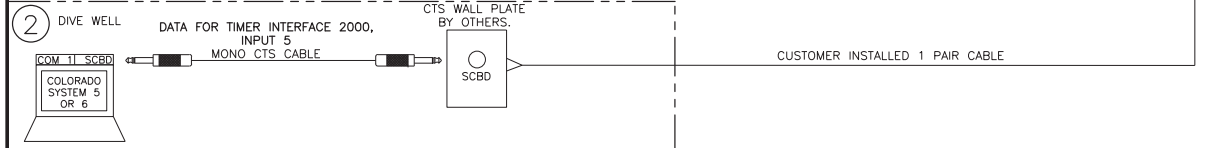
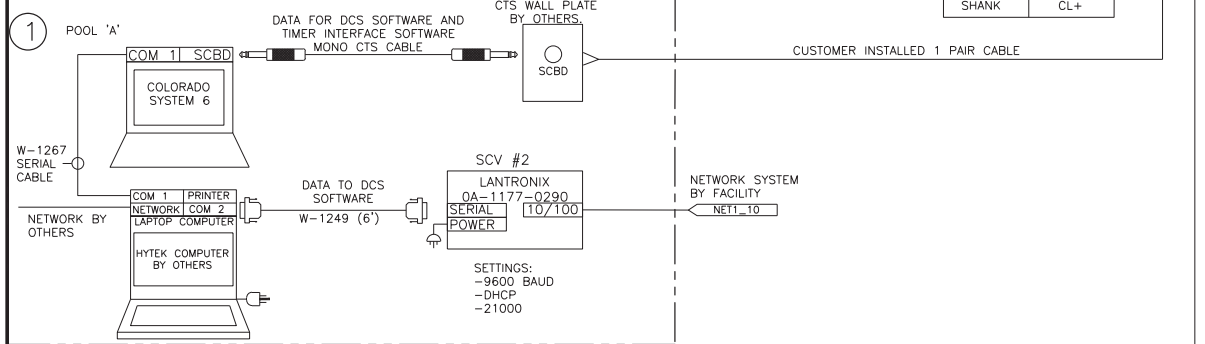
REV	DATE	DESCRIPTION	BY
01	08/01/16	ISSUED FOR CONCEPT	MTR
02	08/01/16	ADDED WHT/BLU AND WHT/GRN TO WIRE COLOR	MTR
03	08/01/16	ADDED WHT/GRN CONNECTION METHOD	MTR
04	08/01/16	ADDED WHT/BLU CONNECTION METHOD	MTR
05	08/01/16	ADDED WHT/BLU CONNECTION METHOD	MTR
06	08/01/16	ADDED WHT/BRN CONNECTION METHOD	MTR
07	08/01/16	ADDED BRN CONNECTION METHOD	MTR

THE CONCEPTS EXPRESSED AND DETAILS SHOWN ON THIS DRAWING ARE CONFIDENTIAL AND PROPRIETARY. DO NOT REPRODUCE BY ANY MEANS WITHOUT THE EXPRESS WRITTEN CONSENT OF DAKTRONICS, INC. OR ITS WHOLLY OWNED SUBSIDIARIES. COPYRIGHT 2018 DAKTRONICS, INC. (USA)

PROJECT: OMNISPORT 2000  
 TITLE: COLORADO SYS 6 TO GLY/DMP8K VIA NET SHOW CONTROL  
 DATE: 27 OCT 10  
 DIM UNITS: INCHES (MILLIMETERS)  
 SCALE: NONE  
 DO NOT SCALE DRAWING  
 DESIGN: CENGELS  
 JOB NO: P1056  
 FUNC - TYPE - SIZE: R-01-B  
 SHEET: 09  
 REV: 09  
 1036117



REFER TO MANUAL DD-1387596 FOR MORE DETAILED INSTRUCTIONS.  
COM PORT NUMBERS MAY CHANGE DEPENDING ON COMPUTER SETUP  
NOTE 'A'  
COMMUNICATION BETWEEN THE TIMER AND THE VENUS 7000 IS RECOMMENDED  
TO BE CURRENT LOOP. FOR DISTANCES OVER 50FT, IT IS MANDATORY.



1 POOL A  
**HY-TEK SETTINGS**  
TIMING CONSOLE INTERFACE: COLORADO TIMING SYSTEM 6  
ALPHA SCOREBOARD INTERFACE: GENERIC SERIAL  
SERIAL COM PORT FOR CTS6 TIMER: \_\_\_  
SERIAL COM PORT FOR GENSER: SCOREBOARD: \_\_\_  
SCOREBOARD PORT PARAMETERS:  
BAUD RATE: 9600  
PARITY: EVEN  
DATA BITS: 7  
STOP BITS: 1

**VENUS 7000 SETTINGS**  
INPUT:1  
NAME: CTS TIMER POOL A  
SOURCE TYPE: API/OTHER  
SOURCE: (BLANK) PROTOCOL: ENHANCED  
SIZE: 4096  
DEFAULT INPUT TEMPLATE: CTS INTERFACE SWIMMING

INPUT:2  
NAME: HY-TEK RESULTS POOL A  
SOURCE TYPE: UDP  
SOURCE: 20,000 PROTOCOL: ENHANCED  
SIZE: 9,728  
DEFAULT ITEM TEMPLATE: HY-TEK GENERIC SCBD INTERFACE CONTINUOUS

**TIMER INTERFACE 2000**  
INPUT #1 NAME: CTS TIMER POOL A  
PORT TYPE: COM PORT  
PORT: COM 7  
BAUD: 9600  
PARITY: EVEN  
DATA BITS: 8  
STOP BITS: 2

OUTPUT #1 SELECT INPUT: "1: CTS TIMER POOL A - COM 7,  
BAUD 9600, EVEN, 8"  
SELECT OUTPUT TYPE: "VENUS 7000 DIRECT"  
PORT: "DIRECT TO VENUS PORT 1"

NOTE: IMPORTANT TO MAKE SURE  
ALL NAMES ARE ENTERED  
EXACTLY AS SHOWN BELOW

**DCS PORT SETTINGS**  
PORT: 1  
NAME: CTS TIMER POOL A  
SOURCE TYPE: COM 6  
BAUD: 9600  
PARITY: EVEN  
DATA BITS: 8  
DEFAULT INPUT TEMPLATE: CTS INTERFACE SWIMMING

PORT: 2  
NAME: HY-TEK A  
SOURCE TYPE: UDP/IP SOCKET  
SOURCE: 21,000  
DEFAULT ITEM TEMPLATE: HY-TEK GENERIC SCBD INTERFACE CONTINUOUS

PORT: 3  
NAME: OUTPUT  
SOURCE TYPE: UDP/IP SOCKET  
SOURCE: 20,000  
DEFAULT ITEM TEMPLATE: HY-TEK GENERIC SCBD INTERFACE CONTINUOUS

**DCS ACTIVE FILE SETTINGS**  
PORT 1  
CTS TO HY-TEK-A-START LIST REQUEST  
PORT 2  
HY-TEK GENERIC RTD TO CONTINUOUS RTD

**SWIMDIVE REQUEST**  
PORT NUMBER: 2  
SIGN SERVICE: DCS  
USE WITH: HYTEK GENERIC SCOREBOARD

2 DIVE WELL:  
**VENUS 7000 SETTINGS**  
INPUT:5  
NAME: CTS DIVE A  
SOURCE TYPE: API/OTHER  
SOURCE: (BLANK)  
PROTOCOL: ENHANCED  
SIZE: 5000  
DEFAULT INPUT TEMPLATE: CTS INTERFACE DIVE

**TIMER INTERFACE 2000**  
INPUT: #3  
NAME: CTS DIVE A  
PORT: COM 5  
BAUD RATE: 9600  
PARITY: EVEN  
DATA BITS: 8  
STOP BITS: 2

OUTPUT #3  
SELECT INPUT: "3 - COM 5, 9600, EVEN, 8"  
SELECT OUTPUT TYPE: "VENUS 7000 DIRECT"  
PORT: "DIRECT TO VENUS PORT 5"

<b>DAKTRONICS, INC.</b> BROOKINGS, SD 57006 DO NOT SCALE DRAWING		THE CONCEPTS EXPRESSED AND DETAILS SHOWN ON THIS DRAWING ARE CONFIDENTIAL AND PROPRIETARY. DO NOT REPRODUCE BY ANY MEANS WITHOUT THE EXPRESSED WRITTEN CONSENT OF DAKTRONICS, INC. COPYRIGHT 2011 DAKTRONICS, INC.	
		PROJ: AQUATICS TITLE: COLORADO SYS 6 TO DMP-7000; WITH AUTO START LIST DESIGN: CENGLES DRAWN: JLAIRD DATE: 14 NOV 11	
SCALE: 1=1 SHEET: 00 REV: 00 JOB NO: P1056		FLUNC-TYPE-SIZE: F-01-B 1075312	